

## Anti-SSB Mouse Monoclonal Antibody [Clone ID: OTI1E11]

Catalog Number: M00705-1

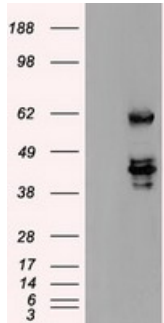
### Overview

Product Name	Anti-SSB Mouse Monoclonal Antibody [Clone ID: OTI1E11]
Reactive Species	Dog, Human, Monkey, Mouse, Rat
Description	Boster Bio Anti-SSB mouse monoclonal antibody, clone OTI1E11 (formerly 1E11). Catalog# M00705-1. Tested in FC, IF, IP, WB. This antibody reacts with Human, Monkey, Mouse, Rat, Dog.
Application	Flow Cytometry, IP, IF, WB
Clonality	Monoclonal OTI1E11
Formulation	PBS (pH 7.3) containing 1% stabilizing protein, 50% glycerol and 0.02% sodium azide. This antibody is supplied in a stabilized formulation. Compatibility with conjugation reactions depends on the chemistry of the conjugation method used. For conjugation methods that are not compatible with the stabilizing components present in this formulation, a carrier-free antibody format is required.
Storage Instructions	Store at -20°C as received.
Host	Mouse
Uniprot ID	P05455

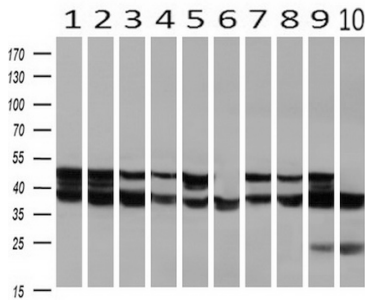
### Technical Details

Immunogen	Full-length protein expressed in 293T cell transfected with human SSB expression vector
Isotype	IgG2a
Concentration	2.8 mg/ml
Purification	Purified from mouse ascites fluids or tissue culture supernatant by affinity chromatography (protein A/G)
Suggested Dilutions	WB: 1:1000~2000 IF: 1:50~100 Flow cytometry: 1:100

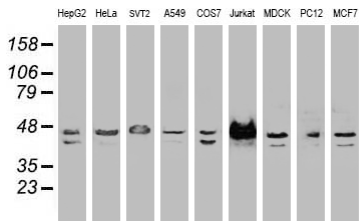
## Anti-SSB Mouse Monoclonal Antibody [Clone ID: OTI1E11] (M00705-1) Images



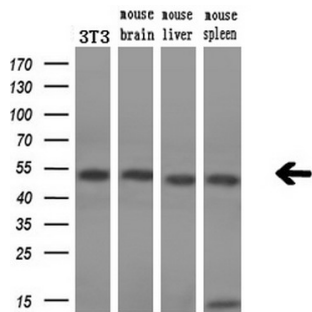
HEK293T cells were transfected with the pCMV6-ENTRY control (Left lane) or pCMV6-ENTRY SSB (Right lane) cDNA for 48 hrs and lysed. Equivalent amounts of cell lysates (5 ug per lane) were separated by SDS-PAGE and immunoblotted with anti-SSB.



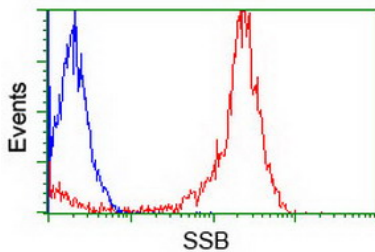
Western blot analysis of extracts (10ug) from 10 Human tissue by using anti-SSB monoclonal antibody at 1:1000 (1: Testis; 2: Omentum; 3: Uterus; 4: Breast; 5: Brain; 6: Liver; 7: Ovary; 8: Thyroid gland; 9: colon; 10: spleen).



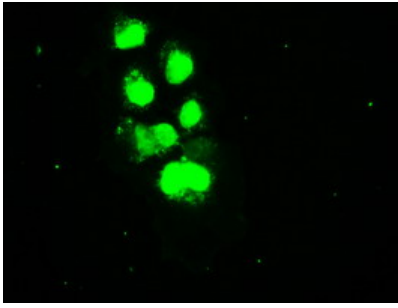
Western blot analysis of extracts (35ug) from 9 different cell lines by using anti-SSB monoclonal antibody.



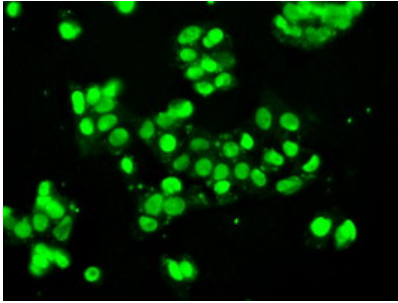
Western blot analysis of extracts (10ug) from a mouse cell line and 3 different mouse tissues by using anti-SSB monoclonal antibody (1:200).



Flow cytometric Analysis of Jurkat cells



Anti-SSB mouse monoclonal antibody (M00705-1) immunofluorescent staining of COS7 cells transiently transfected by pCMV6-ENTRY SSB.



Immunofluorescent staining of HepG2 cells using anti-SSB mouse monoclonal antibody (M00705-1).

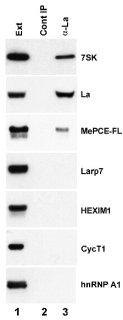


Figure from citation: Immunoprecipitation of SSB (La) protein level by using anti-SSB antibody in HeLa cells.

## Submit a product review to [Biocompare.com](https://www.biocompare.com)

Submit a review of this product to [Biocompare.com](https://www.biocompare.com) to receive a \$20 Amazon.com giftcard! Your reviews help your fellow scientists make the right decisions. Thank you for your contribution.



Anti-SSB Mouse Monoclonal Antibody [Clone ID: OT11E11]

For Research Use Only. Not for use in diagnostic procedures.