

Anti-GDNF Rabbit Monoclonal Antibody

Catalog Number: M00710

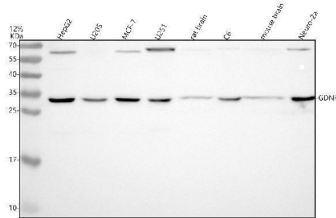
Overview

Product Name	Anti-GDNF Rabbit Monoclonal Antibody
Reactive Species	Human, Mouse, Rat
Description	Boster Bio Anti-GDNF Rabbit Monoclonal Antibody catalog # M00710. Tested in WB, Flow Cytometry applications. This antibody reacts with Human, Mouse, Rat.
Application	Flow Cytometry, WB
Clonality	Monoclonal ABDB-7
Formulation	Rabbit IgG in stabilizing components, phosphate buffered saline, pH 7.4, 150mM NaCl, 0.02% sodium azide and 50% glycerol. *This antibody is supplied in a stabilized formulation. Compatibility with conjugation reactions depends on the chemistry of the conjugation method used. For conjugation methods that are not compatible with the stabilizing components present in this formulation, a carrier-free antibody format is required.
Storage Instructions	Store at -20°C for one year. For short term storage and frequent use, store at 4°C for up to one month. Avoid repeated freeze-thaw cycles.
Host	Rabbit
Uniprot ID	P39905

Technical Details

Immunogen	A synthesized peptide derived from human GDNF
Isotype	Rabbit IgG
Form	Liquid
Concentration	0.5mg/ml
Purification	Affinity-chromatography
Suggested Dilutions	WB 1:500-2000 FC 1:20

Anti-GDNF Rabbit Monoclonal Antibody (M00710) Images



Western blot analysis of GDNF using anti-GDNF antibody (M00710). Electrophoresis was performed on a 12% SDS-PAGE gel at 80V (Stacking gel) / 120V (Resolving gel) for 2 hours. The sample well of each lane was loaded with 30 ug of sample under reducing conditions. Lane 1: human HepG2 whole cell lysates, Lane 2: human U2OS whole cell lysates, Lane 3: human MCF-7 whole cell lysates, Lane 4: human U251 whole cell lysates, Lane 5: rat brain tissue lysates, Lane 6: rat C6 whole cell lysates, Lane 7: mouse brain tissue lysates, Lane 8: mouse Neuro-2a whole cell lysates. After electrophoresis, proteins were transferred to a nitrocellulose membrane at 150 mA for 50-90 minutes. Blocked the membrane with 5% non-fat milk/TBS for 1.5 hour at RT. The membrane was incubated with rabbit anti-GDNF antigen affinity purified monoclonal antibody (M00710) at 1:500 overnight at 4°C, then washed with TBS-0.1%Tween 3 times with 5 minutes each and probed with a goat anti-rabbit IgG-HRP secondary antibody at a dilution of 1:5000 for 1.5 hour at RT. The signal is developed using an ECL Plus Western Blotting Substrate (Catalog # AR1196-200) with Tanon 5200 system. A specific band was detected for GDNF at approximately 32 kDa. The expected band size for GDNF is at 24 kDa.

2 Publications Citing This Product

1. PubMed ID: 21738758, Li R, Xia W, Zhang Z, Wu K. Plos One. 2011;6(6):E21663. Doi: 10.1371/Journal.Pone.0021663. Epub 2011 Jun 27. S100B Protein, Brain-Derived Neurotrophic Factor, And Glial Cell Line-Derived Neurotrophic Factor In Human Milk.
2. PubMed ID: 25206528, Antenatal taurine reduces cerebral cell apoptosis in fetal rats with intrauterine growth restriction

Visit bosterbio.com/anti-gdnf-rabbit-monoclonal-antibody-m00710-boster.html to see all 2 publications.

Submit a product review to Biocompare.com

Submit a review of this product to Biocompare.com to receive a \$20 Amazon.com giftcard! Your reviews help your fellow scientists make the right decisions. Thank you for your contribution.



Anti-GDNF Rabbit Monoclonal Antibody

For Research Use Only. Not for use in diagnostic procedures.