

Anti-MCL1 Mouse Monoclonal Antibody [Clone ID: OTI10F6]

Catalog Number: M00712-1

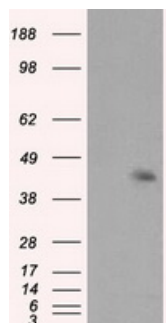
Overview

Product Name	Anti-MCL1 Mouse Monoclonal Antibody [Clone ID: OTI10F6]
Reactive Species	Human
Description	Boster Bio Anti-MCL1 mouse monoclonal antibody, clone OTI10F6 (formerly 10F6). Catalog# M00712-1. Tested in FC, IF, IHC, WB. This antibody reacts with Human.
Application	Flow Cytometry, IF, IHC, WB
Clonality	Monoclonal OTI10F6
Formulation	PBS (pH 7.3) containing 1% BSA, 50% glycerol and 0.02% sodium azide.
Storage Instructions	Store at -20°C as received.
Host	Mouse
Uniprot ID	Q07820

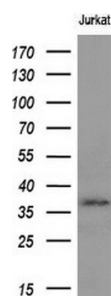
Technical Details

Immunogen	Full length human recombinant protein of human MCL1 (NP_068779) produced in HEK293T cell.
Isotype	IgG1
Concentration	1 mg/ml
Purification	Purified from mouse ascites fluids or tissue culture supernatant by affinity chromatography (protein A/G)
Suggested Dilutions	Dilute the sample so that the expected range of concentrations fall within the detection range of this kit. If the expected range of concentration is unknown, a pilot test should be conducted to decide the optimal dilution ratio for your samples. Some PubMed article(s) citing the expression level of this target are as follows:

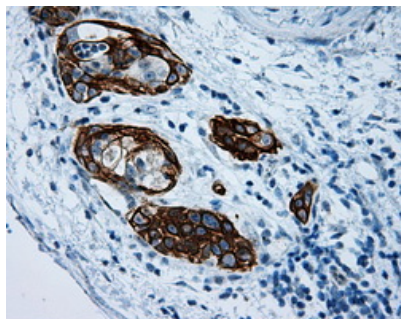
Anti-MCL1 Mouse Monoclonal Antibody [Clone ID: OTI10F6] (M00712-1) Images



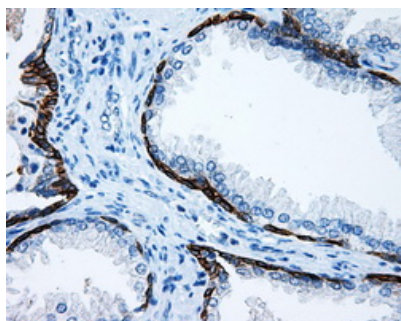
HEK293T cells were transfected with the pCMV6-ENTRY control (Left lane) or pCMV6-ENTRY MCL1 (Right lane) cDNA for 48 hrs and lysed. Equivalent amounts of cell lysates (5 ug per lane) were separated by SDS-PAGE and immunoblotted with anti-MCL1.



Western blot analysis of extracts (10ug) from 1 cell line by using anti-MCL1 monoclonal antibody at 1:200.

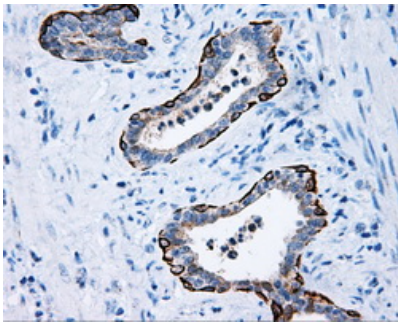
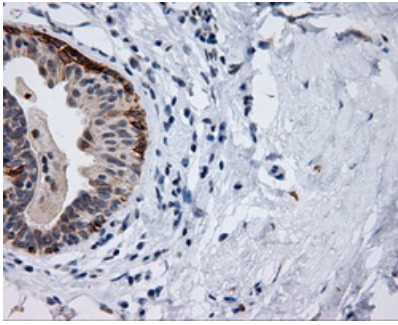


Immunohistochemical staining of paraffin-embedded Carcinoma of pancreas tissue using anti-MCL1 mouse monoclonal antibody. (Heat-induced epitope retrieval by 10mM citric buffer)

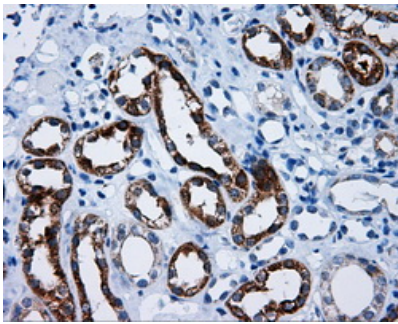


Immunohistochemical staining of paraffin-embedded prostate tissue within the normal limits using anti-MCL1 mouse monoclonal antibody. (Heat-induced epitope retrieval by 10mM citric buffer)

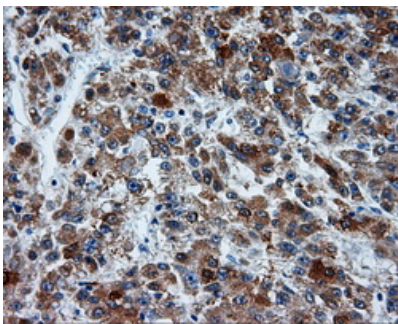
Immunohistochemical staining of paraffin-embedded breast tissue within the normal limits using anti-MCL1 mouse monoclonal antibody. (Heat-induced epitope retrieval by 10mM citric buffer)



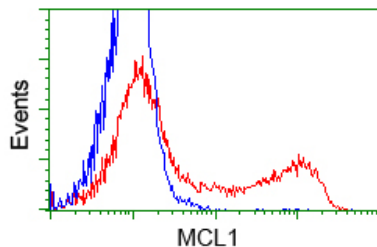
Immunohistochemical staining of paraffin-embedded Carcinoma of prostate tissue using anti-MCL1 mouse monoclonal antibody. (Heat-induced epitope retrieval by 10mM citric buffer)



Immunohistochemical staining of paraffin-embedded Kidney tissue within the normal limits using anti-MCL1 mouse monoclonal antibody. (Heat-induced epitope retrieval by 10mM citric buffer)

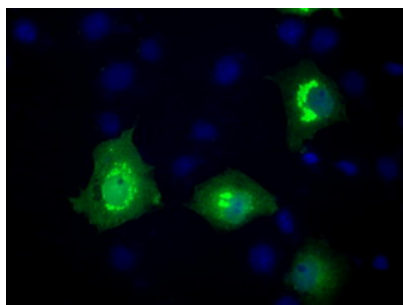


Immunohistochemical staining of paraffin-embedded Carcinoma of liver tissue using anti-MCL1 mouse monoclonal antibody. (Heat-induced epitope retrieval by 10mM citric buffer)



HEK293T cells transfected with either pCMV6-ENTRY MCL1 (Red) or empty vector control plasmid (Blue) were immunostained with anti-MCL1 mouse monoclonal (M00712-1)

Anti-MCL1 mouse monoclonal antibody (M00712-1)



immunofluorescent staining of COS7 cells transiently transfected by pCMV6-ENTRY MCL1.

Submit a product review to Biocompare.com

Submit a review of this product to Biocompare.com to receive a \$20 Amazon.com giftcard! Your reviews help your fellow scientists make the right decisions. Thank you for your contribution.



Anti-MCL1 Mouse Monoclonal Antibody [Clone ID: OTI10F6]