

## Anti-alpha 1 Antitrypsin (SERPINA1) Mouse Monoclonal Antibody [Clone ID: OTI9A1]

Catalog Number: M00720-3

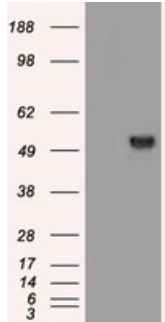
### Overview

Product Name	Anti-alpha 1 Antitrypsin (SERPINA1) Mouse Monoclonal Antibody [Clone ID: OTI9A1]
Reactive Species	Dog, Human, Monkey
Description	Boster Bio Anti-SERPINA1 mouse monoclonal antibody, clone OTI9A1 (formerly 9A1). Catalog# M00720-3. Tested in FC, IHC, IP, WB. This antibody reacts with Human, Monkey, Dog.
Application	Flow Cytometry, IP, IHC, WB
Clonality	Monoclonal OTI9A1
Formulation	PBS (pH 7.3) containing 1% BSA, 50% glycerol and 0.02% sodium azide.
Storage Instructions	Store at -20°C as received.
Host	Mouse
Uniprot ID	P01009

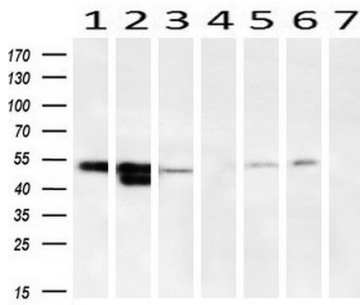
### Technical Details

Immunogen	Full-length protein expressed in 293T cell transfected with human SERPINA1 expression vector
Isotype	IgG1
Concentration	1 mg/ml
Purification	Purified from mouse ascites fluids or tissue culture supernatant by affinity chromatography (protein A/G)
Suggested Dilutions	Dilute the sample so that the expected range of concentrations fall within the detection range of this kit. If the expected range of concentration is unknown, a pilot test should be conducted to decide the optimal dilution ratio for your samples. Some PubMed article(s) citing the expression level of this target are as follows:

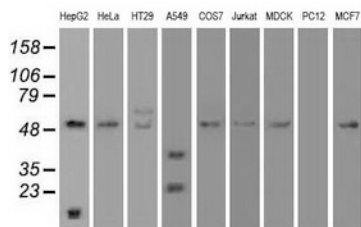
## Anti-alpha 1 Antitrypsin (SERPINA1) Mouse Monoclonal Antibody [Clone ID: OTI9A1] (M00720-3) Images



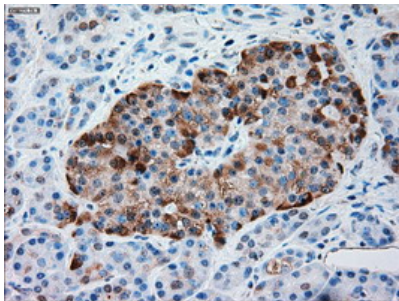
HEK293T cells were transfected with the pCMV6-ENTRY control (Left lane) or pCMV6-ENTRY SERPINA1 (Right lane) cDNA for 48 hrs and lysed. Equivalent amounts of cell lysates (5 ug per lane) were separated by SDS-PAGE and immunoblotted with anti-SERPINA1.



Western blot analysis of extracts (10ug) from 7 Human tissue by using anti-SERPINA1 monoclonal antibody ( 1: Uterus; 2: Breast; 3: Brain; 4: Liver; 5: Ovary; 6: Thyroid gland; 7: colon) at 1:200 dilution.

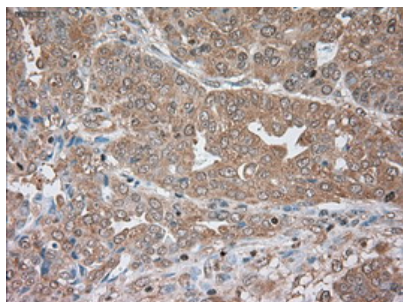
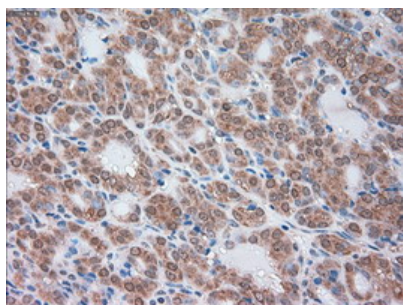


Western blot analysis of extracts (35ug) from 9 different cell lines by using anti-SERPINA1 monoclonal antibody.

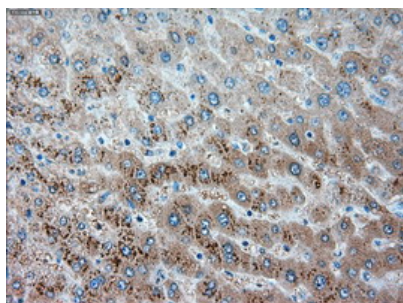


Immunohistochemical staining of paraffin-embedded Human pancreas tissue within the normal limits using anti-SERPINA1 mouse monoclonal antibody. (Heat-induced epitope retrieval by 10mM citric buffer

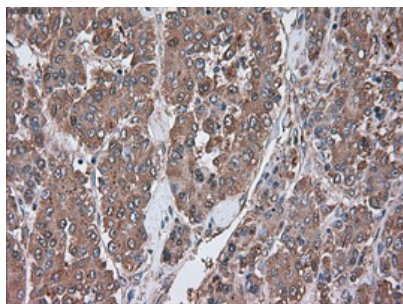
Immunohistochemical staining of paraffin-embedded Carcinoma of Human thyroid tissue using anti-SERPINA1 mouse monoclonal antibody. (Heat-induced epitope retrieval by 10mM citric buffer



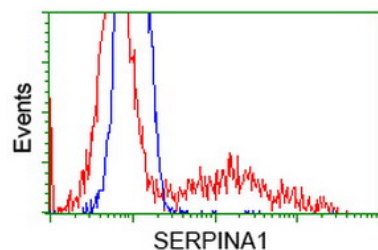
Immunohistochemical staining of paraffin-embedded Adenocarcinoma of Human endometrium tissue using anti-SERPINA1 mouse monoclonal antibody. (Heat-induced epitope retrieval by 10mM citric buffer)



Immunohistochemical staining of paraffin-embedded Human liver tissue within the normal limits using anti-SERPINA1 mouse monoclonal antibody. (Heat-induced epitope retrieval by 10mM citric buffer)



Immunohistochemical staining of paraffin-embedded Carcinoma of Human liver tissue using anti-SERPINA1 mouse monoclonal antibody. (Heat-induced epitope retrieval by 10mM citric buffer)



HEK293T cells transfected with either SERPINA1 (Myc-DDK-tagged) overexpress plasmid (Red) or empty vector control plasmid (Blue) were immunostained by anti-SERPINA1 antibody (M00720-3)

**Submit a product review to Biocompare.com**

Submit a review of this product to Biocompare.com to receive a \$20 Amazon.com giftcard! Your



reviews help your fellow scientists make the right decisions. Thank you for your contribution.

**Anti-alpha 1 Antitrypsin (SERPINA1) Mouse Monoclonal Antibody [Clone ID: OTI9A1]**