

Anti-ROCK1 Rabbit Monoclonal Antibody

Catalog Number: M00722

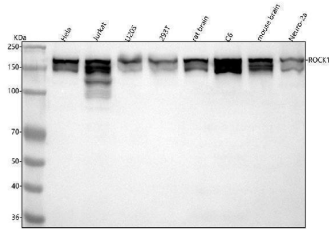
Overview

Product Name	Anti-ROCK1 Rabbit Monoclonal Antibody
Reactive Species	Human, Mouse, Rat
Description	Boster Bio Anti-ROCK1 Rabbit Monoclonal Antibody catalog # M00722. Tested in WB, IHC, ICC/IF, IP, Flow Cytometry applications. This antibody reacts with Human, Mouse, Rat.
Application	Flow Cytometry, IP, IF, IHC, ICC, WB
Clonality	Monoclonal CDE-18
Formulation	Rabbit IgG in stabilizing components, phosphate buffered saline, pH 7.4, 150mM NaCl, 0.02% sodium azide and 50% glycerol. *This antibody is supplied in a stabilized formulation. Compatibility with conjugation reactions depends on the chemistry of the conjugation method used. For conjugation methods that are not compatible with the stabilizing components present in this formulation, a carrier-free antibody format is required.
Storage Instructions	Store at -20°C for one year. For short term storage and frequent use, store at 4°C for up to one month. Avoid repeated freeze-thaw cycles.
Host	Rabbit
Uniprot ID	Q13464

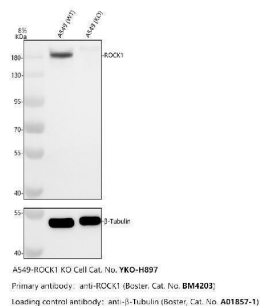
Technical Details

Immunogen	A synthesized peptide derived from human ROCK1
Isotype	Rabbit IgG
Form	Liquid
Concentration	0.5mg/ml
Purification	Affinity-chromatography
Suggested Dilutions	WB 1:500-2000 IHC 1:50-200 ICC/IF 1:50-200 IP 1:20 FC 1:20

Anti-ROCK1 Rabbit Monoclonal Antibody (M00722) Images

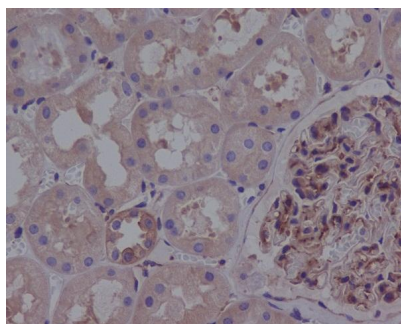


Western blot analysis of ROCK1 using anti-ROCK1 antibody (M00722). Electrophoresis was performed on a 5-20% SDS-PAGE gel at 70V (Stacking gel) / 90V (Resolving gel) for 2-3 hours. The sample well of each lane was loaded with 30 ug of sample under reducing conditions. Lane 1: human HeLa whole cell lysates, Lane 2: human Jurkat whole cell lysates, Lane 3: human U2OS whole cell lysates, Lane 4: human 293T whole cell lysates, Lane 5: rat brain tissue lysates, Lane 6: rat C6 whole cell lysates, Lane 7: mouse brain tissue lysates, Lane 8: mouse Neuro-2a whole cell lysates. After electrophoresis, proteins were transferred to a nitrocellulose membrane at 150 mA for 50-90 minutes. Blocked the membrane with 5% non-fat milk/TBS for 1.5 hour at RT. The membrane was incubated with rabbit anti-ROCK1 antigen affinity purified monoclonal antibody (Catalog # M00722) at 1:500 overnight at 4°C, then washed with TBS-0.1%Tween 3 times with 5 minutes each and probed with a goat anti-rabbit IgG-HRP secondary antibody at a dilution of 1:500 for 1.5 hour at RT. The signal is developed using an Enhanced Chemiluminescent detection (ECL) kit (Catalog # EK1002) with Tanon 5200 system. A specific band was detected for ROCK1 at approximately 170 kDa. The expected band size for ROCK1 is at 158 kDa.

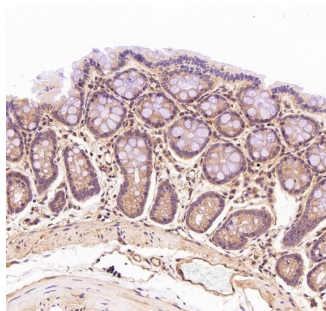


Western blot analysis of ROCK1 using anti-ROCK1 antibody (M00722). Electrophoresis was performed on a 8% SDS-PAGE gel at 80V (Stacking gel) / 120V (Resolving gel) for 2 hours. The sample well of each lane was loaded with 30 ug of sample under reducing conditions. Lane 1: human A549-WT whole cell lysates, Lane 2: human A549-ROCK1 KO whole cell lysates. After electrophoresis, proteins were transferred to a nitrocellulose membrane at 150 mA for 50-90 minutes. Blocked the membrane with 5% non-fat milk/TBS for 1.5 hour at RT. The membrane was incubated with rabbit anti-ROCK1 antigen affinity purified monoclonal antibody (M00722) at 0.5 ug/mL overnight at 4°C, then washed with TBS-0.1%Tween 3 times with 5 minutes each and probed with a goat anti-rabbit IgG-HRP secondary antibody at a dilution of 1:5000 for 1.5 hour at RT. The signal is developed using an ECL Plus Western Blotting Substrate (Catalog # AR1196-200) with Tanon 5200 system. A specific band was detected for ROCK1 at approximately 158 kDa. The expected band size for ROCK1 is at 158 kDa.

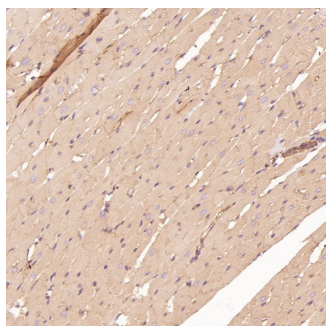
Immunohistochemical analysis of paraffin-embedded human kidney, using ROCK1 Antibody(M00722)ROCK1 was detected in paraffin-embedded tissue section. Heat mediated antigen retrieval was performed in citrate buffer (pH6, epitope retrieval solution) for 20 mins. The tissue section was blocked with 10% goat serum. The tissue section was then incubated with 1ug/ml rabbit anti-ROCK1 Antibody (M00722)overnight at 4 Biotinylated goat anti-rabbit IgG was used as secondary antibody and incubated for 30 minutes at



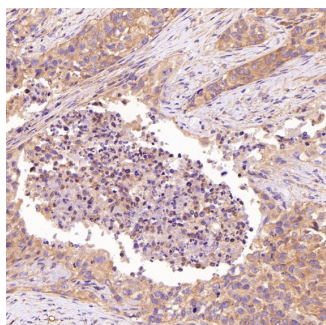
37 The tissue section was developed using Streptavidin-Biotin-Complex (SABC)(Catalog # SA1022) with DAB as the chromogen.



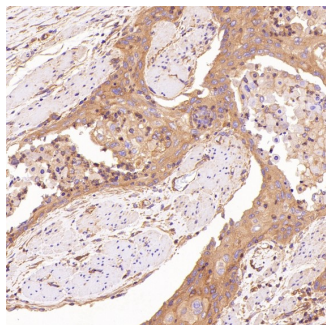
Immunohistochemical analysis of paraffin-embedded Rat stomach, using the Antibody at 1:150 dilution.



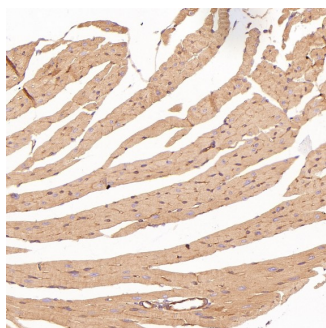
Immunohistochemical analysis of paraffin-embedded Rat heart, using the Antibody at 1:150 dilution.



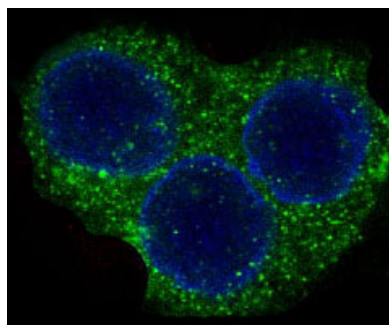
Immunohistochemical analysis of paraffin-embedded Human squamous carcinoma, using the Antibody at 1:150 dilution.



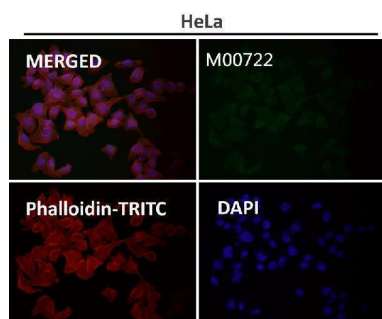
Immunohistochemical analysis of paraffin-embedded Human esophageal carcinoma, using the Antibody at 1:150 dilution.



Immunohistochemical analysis of paraffin-embedded Mouse heart, using the Antibody at 1:150 dilution.



Immunofluorescent analysis of HeLa cells, using ROCK1 Antibody .



Immunofluorescent analysis using the Antibody at 1:50 dilution.

Submit a product review to Biocompare.com

Submit a review of this product to Biocompare.com to receive a \$20 Amazon.com giftcard! Your reviews help your fellow scientists make the right decisions. Thank you for your contribution.



Anti-ROCK1 Rabbit Monoclonal Antibody

For Research Use Only. Not for use in diagnostic procedures.