

Anti-FOXP1 Mouse Monoclonal Antibody [Clone ID: OTI4F1]

Catalog Number: M00723-2

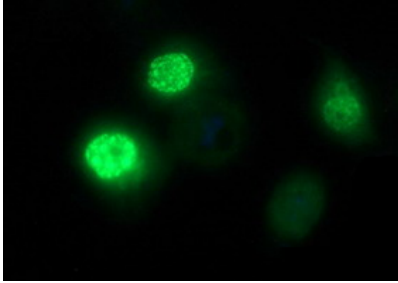
Overview

Product Name	Anti-FOXP1 Mouse Monoclonal Antibody [Clone ID: OTI4F1]
Reactive Species	Human
Description	Boster Bio FOXP1 mouse monoclonal antibody, clone OTI4F1 (formerly 4F1). Catalog# M00723-2. Tested in IF, IHC, WB. This antibody reacts with Human.
Conjugate	Unconjugated
Application	IF, IHC, WB
Clonality	Monoclonal OTI4F1
Formulation	PBS (pH 7.3) containing 1% stabilizing protein, 50% glycerol and 0.02% sodium azide. This antibody is supplied in a stabilized formulation. Compatibility with conjugation reactions depends on the chemistry of the conjugation method used. For conjugation methods that are not compatible with the stabilizing components present in this formulation, a carrier-free antibody format is required.
Storage Instructions	Store at -20°C for one year. For short term storage and frequent use, store at 4°C for up to one month. Avoid repeated freeze-thaw cycles.
Host	Mouse
Uniprot ID	Q9H334

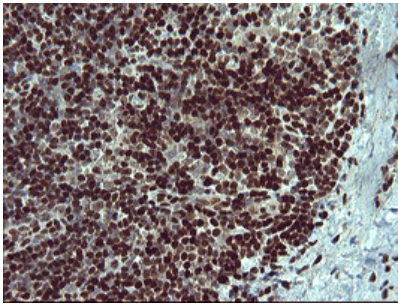
Technical Details

Immunogen	Full length human recombinant protein of human FOXP1 (NP_116071) produced in HEK293T cell.
Isotype	IgG1
Concentration	1 mg/ml
Purification	Purified from mouse ascites fluids or tissue culture supernatant by affinity chromatography (protein A/G)
Suggested Dilutions	WB: 1:1000-1:4000 IHC: 1:50-1:150 IF: 1:50-1:100

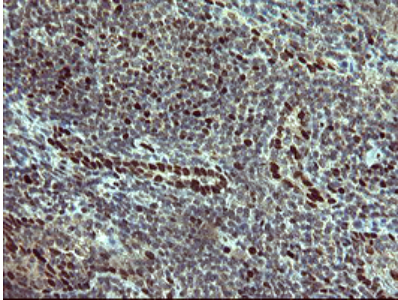
Anti-FOXP1 Mouse Monoclonal Antibody [Clone ID: OTI4F1] (M00723-2) Images



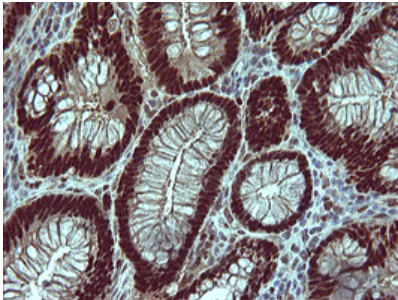
Immunofluorescent staining of COS7 cells



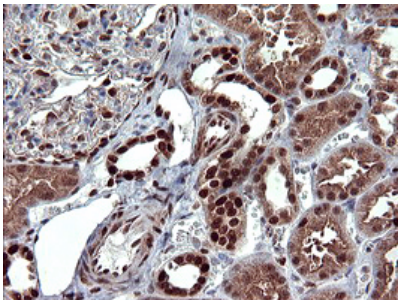
Immunohistochemical staining of paraffin-embedded Human lymph node tissue within the normal limits using anti-FOXP1 mouse monoclonal antibody at 1:150 (M00723-2)



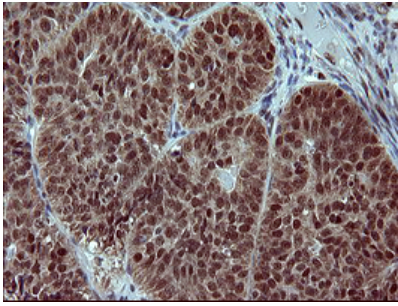
Immunohistochemical staining of paraffin-embedded Human lymphoma tissue using anti-FOXP1 mouse monoclonal antibody at 1:150 (M00723-2)



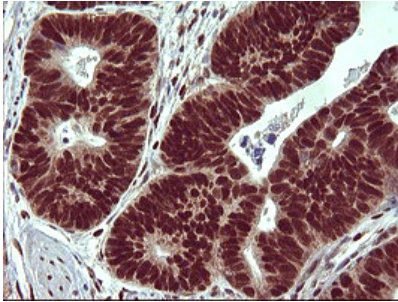
Immunohistochemical staining of paraffin-embedded Adenocarcinoma of Human colon tissue using anti-FOXP1 mouse monoclonal antibody at 1:150 (M00723-2)



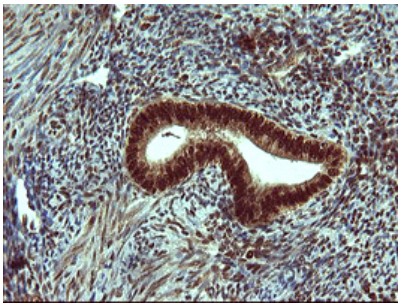
Immunohistochemical staining of paraffin-embedded Human Kidney tissue within the normal limits using anti-FOXP1 mouse monoclonal antibody at 1:150 (M00723-2)



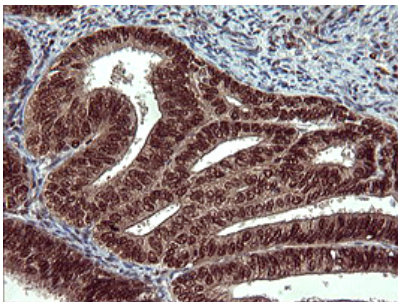
Immunohistochemical staining of paraffin-embedded Adenocarcinoma of Human ovary tissue using anti-FOXP1 mouse monoclonal antibody at 1:150 (M00723-2)



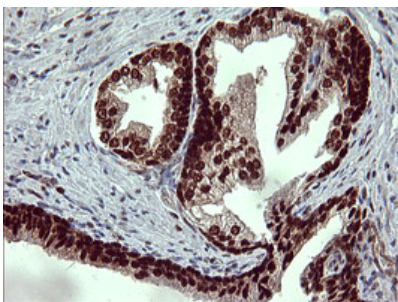
Immunohistochemical staining of paraffin-embedded Carcinoma of Human pancreas tissue using anti-FOXP1 mouse monoclonal antibody at 1:150 (M00723-2)



Immunohistochemical staining of paraffin-embedded Human endometrium tissue within the normal limits using anti-FOXP1 mouse monoclonal antibody at 1:150 (M00723-2)

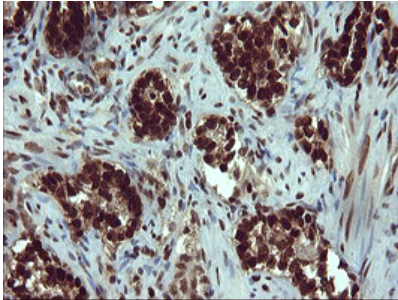
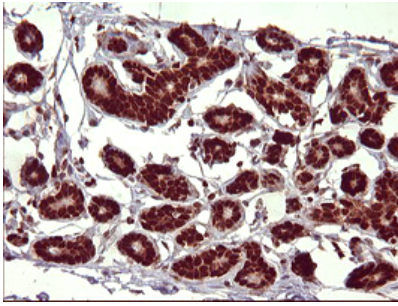


Immunohistochemical staining of paraffin-embedded Adenocarcinoma of Human endometrium tissue using anti-FOXP1 mouse monoclonal antibody at 1:150 (M00723-2)

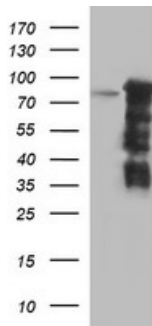


Immunohistochemical staining of paraffin-embedded Human prostate tissue within the normal limits using anti-FOXP1 mouse monoclonal antibody at 1:150 (M00723-2)

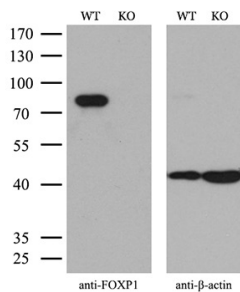
Immunohistochemical staining of paraffin-embedded Human breast tissue within the normal limits using anti-FOXP1 mouse monoclonal antibody at 1:150 (M00723-2)



Immunohistochemical staining of paraffin-embedded Carcinoma of Human prostate tissue using anti-FOXP1 mouse monoclonal antibody at 1:150 (M00723-2)



HEK293T cells were transfected with the pCMV6-ENTRY control (Left lane) or pCMV6-ENTRY FOXP1 (Right lane) cDNA for 48 hrs and lysed. Equivalent amounts of cell lysates (5 ug per lane) were separated by SDS-PAGE and immunoblotted with anti-FOXP1.



Equivalent amounts of cell lysates (10 ug per lane) of wild-type 293T cells (WT) and FOXP1-Knockout 293T cells (KO) were separated by SDS-PAGE and immunoblotted with anti-FOXP1 monoclonal antibody M00723-2. Then the blotted membrane was stripped and reprobed with anti-β-actin antibody as a loading control (1:500).

Submit a product review to Biocompare.com

Submit a review of this product to Biocompare.com to receive a \$20 Amazon.com giftcard! Your reviews help your fellow scientists make the right decisions. Thank you for your contribution.



Anti-FOXP1 Mouse Monoclonal Antibody [Clone ID: OTI4F1]

For Research Use Only. Not for use in diagnostic procedures.