

## Anti-FOXP1 Mouse Monoclonal Antibody [Clone ID: OTI3G3]

Catalog Number: M00723-3

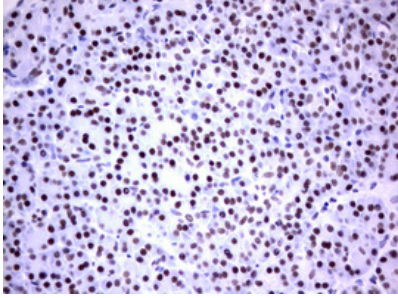
### Overview

Product Name	Anti-FOXP1 Mouse Monoclonal Antibody [Clone ID: OTI3G3]
Reactive Species	Human
Description	Boster Bio FOXP1 mouse monoclonal antibody, clone OTI3G3 (formerly 3G3). Catalog# M00723-3. Tested in FC, IHC. This antibody reacts with Human.
Application	Flow Cytometry, IHC
Clonality	Monoclonal OTI3G3
Formulation	PBS (pH 7.3) containing 1% stabilizing protein, 50% glycerol and 0.02% sodium azide. This antibody is supplied in a stabilized formulation. Compatibility with conjugation reactions depends on the chemistry of the conjugation method used. For conjugation methods that are not compatible with the stabilizing components present in this formulation, a carrier-free antibody format is required.
Storage Instructions	Store at -20°C as received.
Host	Mouse
Uniprot ID	Q9H334

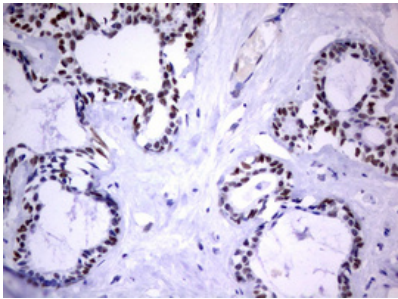
### Technical Details

Immunogen	Full length human recombinant protein of human FOXP1 (NP_116071) produced in SF9 cell.
Isotype	IgG2b
Concentration	1 mg/ml
Purification	Purified from mouse ascites fluids or tissue culture supernatant by affinity chromatography (protein A/G)
Suggested Dilutions	IHC 1:150 Flow Cytometry 1:50

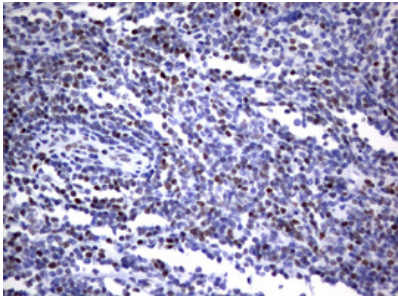
## Anti-FOXP1 Mouse Monoclonal Antibody [Clone ID: OTI3G3] (M00723-3) Images



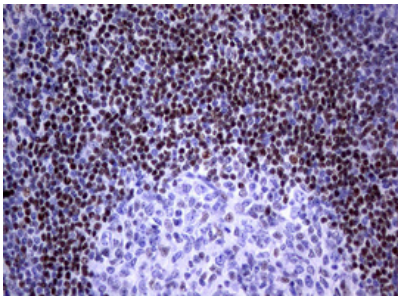
Immunohistochemical staining of paraffin-embedded Human pancreas tissue within the normal limits using anti-FOXP1 mouse monoclonal antibody. (M00723-3; heat-induced epitope retrieval by 1 mM EDTA in 10mM Tris



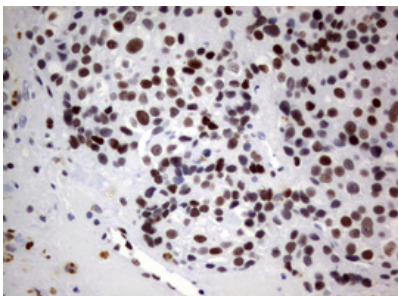
Immunohistochemical staining of paraffin-embedded Human breast tissue within the normal limits using anti-FOXP1 mouse monoclonal antibody. (M00723-3; heat-induced epitope retrieval by 1 mM EDTA in 10mM Tris



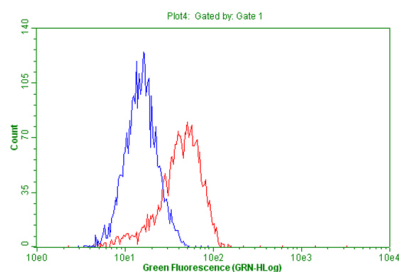
Immunohistochemical staining of paraffin-embedded Human lymphoma tissue using anti-FOXP1 mouse monoclonal antibody. (M00723-3; heat-induced epitope retrieval by 1 mM EDTA in 10mM Tris



Immunohistochemical staining of paraffin-embedded Human tonsil within the normal limits using anti-FOXP1 mouse monoclonal antibody. (M00723-3; heat-induced epitope retrieval by 1 mM EDTA in 10mM Tris



Immunohistochemical staining of paraffin-embedded Adenocarcinoma of Human breast tissue using anti-FOXP1 mouse monoclonal antibody. (M00723-3; heat-induced epitope retrieval by 1 mM EDTA in 10mM Tris



Flow cytometric Analysis of penetrated Jurkat cells

## Submit a product review to Biocompare.com

Submit a review of this product to Biocompare.com to receive a \$20 Amazon.com giftcard! Your reviews help your fellow scientists make the right decisions. Thank you for your contribution.



Anti-FOXP1 Mouse Monoclonal Antibody [Clone ID: OTI3G3]

For Research Use Only. Not for use in diagnostic procedures.