

## Anti-SMAD1 Antibody

Catalog Number: M00728-3

### About SMAD1

Transcriptional modulator activated by BMP (bone morphogenetic proteins) type 1 receptor kinase. SMAD1 is a receptor-regulated SMAD (R-SMAD). SMAD1/OAZ1/PSMB4 complex mediates the degradation of the CREBBP/EP300 repressor SNIP1. May act synergistically with SMAD4 and YY1 in bone morphogenetic protein (BMP)-mediated cardiac-specific gene expression.

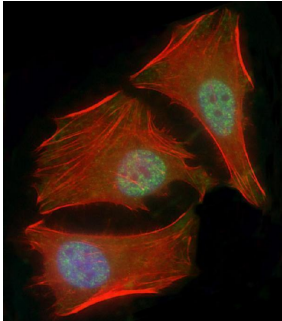
### Overview

Product Name	Anti-SMAD1 Antibody
Reactive Species	Human
Description	Boster Bio Anti-SMAD1 Antibody (Catalog # M00728-3). Tested in WB, IHC-P, IF application(s). This antibody reacts with Human.
Application	IF, IHC-P, WB
Clonality	Monoclonal 1356CT119.18.55
Formulation	Purified monoclonal antibody supplied in PBS with 0.09% (W/V) sodium azide.
Storage Instructions	Maintain refrigerated at 2-8°C for up to 2 weeks. For long-term storage, store at -20°C in small aliquots to prevent freeze-thaw cycles.
Host	Mouse
Uniprot ID	Q15797

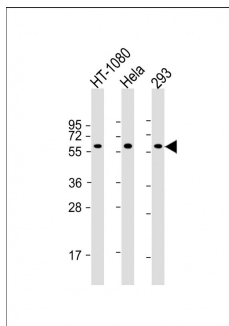
### Technical Details

Immunogen	This SMAD1 antibody is generated from a mouse immunized with a recombinant protein between 20-330 amino acids from human SMAD1.
Predicted Reactive Species	Mouse
Isotype	IgG1,k
Purification	This antibody is purified through a protein G column, followed by dialysis against PBS.
Suggested Dilutions	IF: 1:25 WB: 1:2000 IHC-P: 1:25

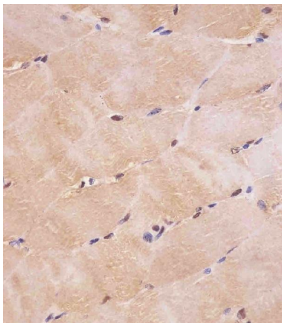
## Anti-SMAD1 Antibody (M00728-3) Images



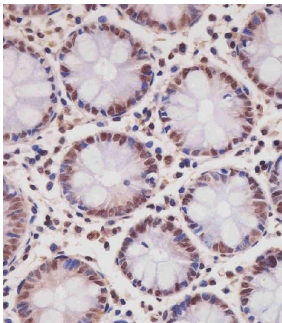
Immunofluorescent analysis of 4% paraformaldehyde-fixed, 0.1% Triton X-100 permeabilized HeLa (human cervical epithelial adenocarcinoma cell line) cells labeling SMAD1 with M00728-3 at 1/25 dilution, followed by Dylight® 488-conjugated goat anti-mouse IgG secondary antibody at 1/200 dilution (green). Immunofluorescence image showing nucleus and weak cytoplasm staining on HeLa cell line. Cytoplasmic actin is detected with Dylight® 554 Phalloidin at 1/100 dilution (red). The nuclear counter stain is DAPI (blue).



All lanes : Anti-SMAD1 Antibody at 1:2000 dilution  
Lane 1: HT-1080 whole cell lysate  
Lane 2: HeLa whole cell lysate  
Lane 3: 293 whole cell lysate  
Lysates/proteins at 20 µg per lane.  
Secondary Goat Anti-mouse IgG, (H+L), Peroxidase conjugated at 1/10000 dilution. Predicted band size : 60 kDa  
Blocking/Dilution buffer: 5% NFD/MTBST.



M00728-3 staining SMAD1 in human skeletal muscle tissue sections by Immunohistochemistry (IHC-P -paraformaldehyde-fixed, paraffin-embedded sections). Tissue was fixed with formaldehyde and blocked with 3% BSA for 0.5 hour at room temperature; antigen retrieval was by heat mediation with a citrate buffer (pH6). Samples were incubated with primary antibody (1/25) for 1 hours at 37°C. A undiluted biotinylated goat polyvalent antibody was used as the secondary antibody.



M00728-3 staining SMAD1 in human colon tissue sections by Immunohistochemistry (IHC-P -paraformaldehyde-fixed, paraffin-embedded sections). Tissue was fixed with formaldehyde and blocked with 3% BSA for 0.5 hour at room temperature; antigen retrieval was by heat mediation with a citrate buffer (pH6). Samples were incubated with primary antibody (1/25) for 1 hours at 37°C. A undiluted biotinylated goat polyvalent antibody was used as the secondary antibody.

Submit a product review to [Biocompare.com](https://www.biocompare.com)

Submit a review of this product to [Biocompare.com](https://www.biocompare.com) to receive a \$20 Amazon.com giftcard! Your reviews help your fellow scientists make the right decisions. Thank you for your contribution.



Anti-SMAD1 Antibody

For Research Use Only. Not for use in diagnostic procedures.