

## Anti-MMP1 Rabbit Monoclonal Antibody

Catalog Number: M00733

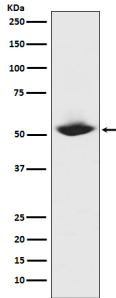
### Overview

Product Name	Anti-MMP1 Rabbit Monoclonal Antibody
Reactive Species	Human
Description	Boster Bio Anti-MMP1 Rabbit Monoclonal Antibody catalog # M00733. Tested in WB, IHC, ICC/IF, Flow Cytometry applications. This antibody reacts with Human.
Application	Flow Cytometry, IF, IHC, ICC, WB
Clonality	Monoclonal CDG-13
Formulation	Rabbit IgG in stabilizing components, phosphate buffered saline, pH 7.4, 150mM NaCl, 0.02% sodium azide and 50% glycerol. *This antibody is supplied in a stabilized formulation. Compatibility with conjugation reactions depends on the chemistry of the conjugation method used. For conjugation methods that are not compatible with the stabilizing components present in this formulation, a carrier-free antibody format is required.
Storage Instructions	Store at -20°C for one year. For short term storage and frequent use, store at 4°C for up to one month. Avoid repeated freeze-thaw cycles.
Host	Rabbit
Uniprot ID	P03956

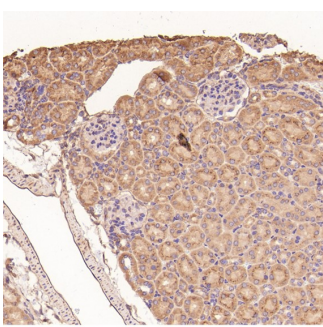
### Technical Details

Immunogen	A synthesized peptide derived from human MMP1
Isotype	Rabbit IgG
Form	Liquid
Concentration	0.5mg/ml
Purification	Affinity-chromatography
Suggested Dilutions	WB 1:500-2000 IHC 1:50-200 ICC/IF 1:50-200 FC 1:50

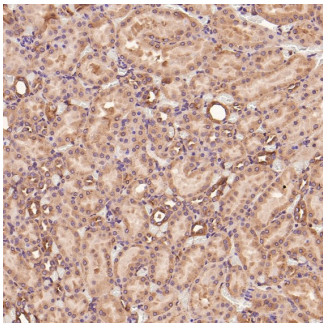
## Anti-MMP1 Rabbit Monoclonal Antibody (M00733) Images



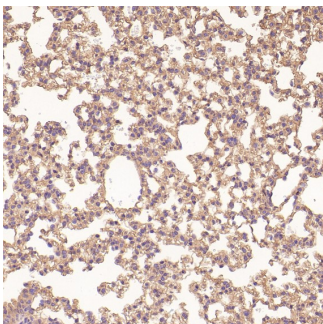
Western blot analysis of MMP1 expression in MMP1 recombinant protein.



Immunohistochemical analysis of paraffin-embedded Mouse kidney, using the Antibody at 1:50 dilution.

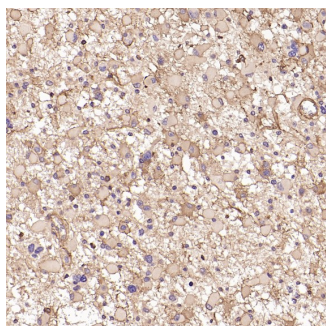


Immunohistochemical analysis of paraffin-embedded Rat kidney, using the Antibody at 1:50 dilution.

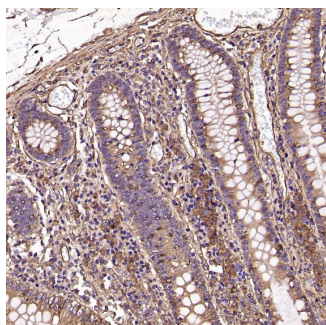


Immunohistochemical analysis of paraffin-embedded Mouse lung, using the Antibody at 1:50 dilution.

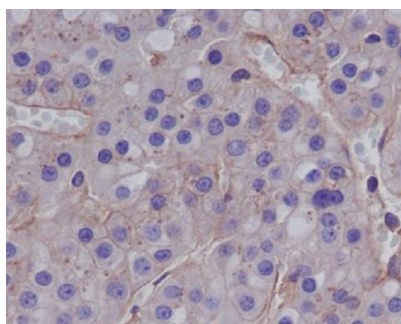
Immunohistochemical analysis of paraffin-embedded Human astrocytoma, using the Antibody at 1:50 dilution.



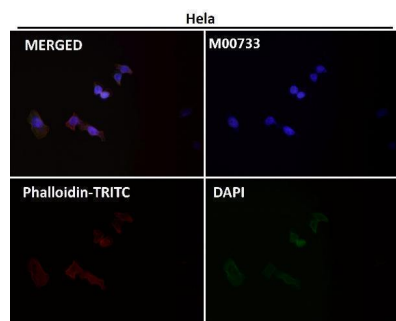
Immunohistochemical analysis of paraffin-embedded Human colon, using the Antibody at 1:50 dilution.



Immunohistochemical analysis of paraffin-embedded human hepatocellular carcinoma, using MMP1 Antibody.



Immunofluorescent analysis using the Antibody at 1:50 dilution.



## 5 Publications Citing This Product

1. PubMed ID: 26550147, Andrographolide plays an important role in bleomycin-induced pulmonary fibrosis treatment
2. PubMed ID: 25517994, Xu Y, Zhang Ja, Xu Y, Guo Si, Wang S, Wu D, Wang Y, Luo D, Zhou Br. Stem Cells Dev. 2015 May 1;24(9):1096-111. Doi: 10.1089/Scd.2014.0321. Epub 2015 Jan 21. Antiphotaging Effect Of Conditioned Medium Of Dedifferentiated Adipocytes On Skin In Vivo...
3. PubMed ID: 26170698, Fan Hx, Chen Y, Ni Bx, Wang S, Sun M, Chen D, Zheng Jh. Onco Targets Ther. 2015 Jul 3;8:1619-26. Doi: 10.2147/Ott.S84561. Ecollection 2015. Expression Of Mmp-1/Par-1 And Patterns Of Invasion In Oral Squamous Cell Carcinoma As Potential Prognostic ...

Visit [bosterbio.com/anti-mmp1-rabbit-monoclonal-antibody-m00733-boster.html](https://bosterbio.com/anti-mmp1-rabbit-monoclonal-antibody-m00733-boster.html) to see all 5 publications.

## Submit a product review to Biocompare.com

Submit a review of this product to Biocompare.com to receive a \$20 Amazon.com giftcard! Your reviews help your fellow scientists make the right decisions. Thank you for your contribution.



Anti-MMP1 Rabbit Monoclonal Antibody

For Research Use Only. Not for use in diagnostic procedures.