

Anti-Argininosuccinate Lyase (ASL) Mouse Monoclonal Antibody [Clone ID: OT19G2]

Catalog Number: M00742

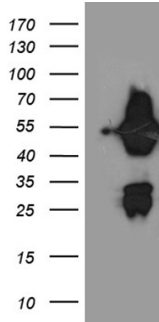
Overview

Product Name	Anti-Argininosuccinate Lyase (ASL) Mouse Monoclonal Antibody [Clone ID: OT19G2]
Reactive Species	Human, Mouse, Rat
Description	Boster Bio ASL mouse monoclonal antibody, clone OT19G2. Catalog# M00742. Tested in IHC, WB. This antibody reacts with Human, Mouse, Rat.
Application	IHC, WB
Clonality	Monoclonal OT19G2
Formulation	PBS (pH 7.3) containing 1% stabilizing protein, 50% glycerol and 0.02% sodium azide. This antibody is supplied in a stabilized formulation. Compatibility with conjugation reactions depends on the chemistry of the conjugation method used. For conjugation methods that are not compatible with the stabilizing components present in this formulation, a carrier-free antibody format is required.
Storage Instructions	Store at -20°C as received.
Host	Mouse
Uniprot ID	P04424

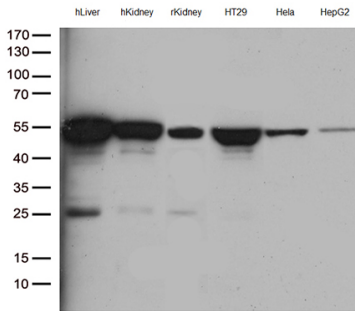
Technical Details

Immunogen	Full length human recombinant protein of human ASL (NP_001020114) produced in HEK293T cell.
Isotype	IgG1
Concentration	1 mg/ml
Purification	Purified from mouse ascites fluids or tissue culture supernatant by affinity chromatography (protein A/G)
Suggested Dilutions	WB 1:500~2000 IHC 1:500

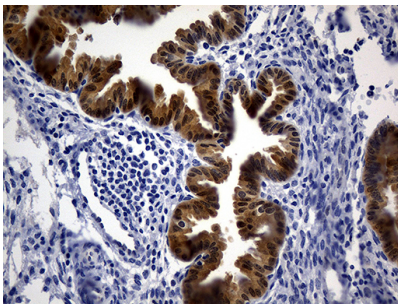
Anti-Argininosuccinate Lyase (ASL) Mouse Monoclonal Antibody [Clone ID: OTI9G2] (M00742) Images



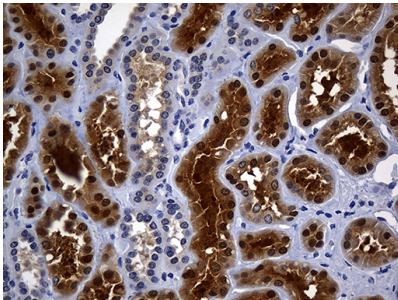
HEK293T cells were transfected with the pCMV6-ENTRY control (Left lane) or pCMV6-ENTRY ASL (Right lane) cDNA for 48 hrs and lysed. Equivalent amounts of cell lysates (5 ug per lane) were separated by SDS-PAGE and immunoblotted with anti-ASL (1:2000).



Western blot analysis of extracts (35ug) from different cell line by using anti-CTNND1 monoclonal antibody (1:500).

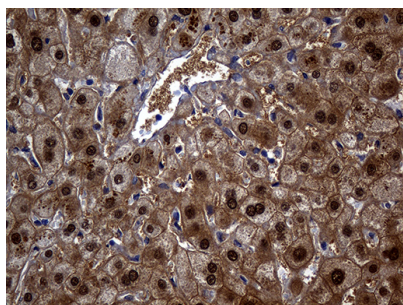


Immunohistochemical staining of paraffin-embedded Human endometrium tissue within the normal limits using anti-ASL mouse monoclonal antibody. (Heat-induced epitope retrieval by 1mM EDTA in 10mM Tris buffer (pH8.5) at 120°C for 3min)



Immunohistochemical staining of paraffin-embedded Human Kidney tissue within the normal limits using anti-ASL mouse monoclonal antibody. (Heat-induced epitope retrieval by 1mM EDTA in 10mM Tris buffer (pH8.5) at 120°C for 3min)

Immunohistochemical staining of paraffin-embedded Human liver tissue within the normal limits using anti-ASL mouse monoclonal antibody. (Heat-induced epitope retrieval by 1mM EDTA in 10mM Tris buffer (pH8.5) at 120°C for 3min)



Submit a product review to Biocompare.com

Submit a review of this product to Biocompare.com to receive a \$20 Amazon.com giftcard! Your reviews help your fellow scientists make the right decisions. Thank you for your contribution.



Anti-Argininosuccinate Lyase (ASL) Mouse Monoclonal Antibody [Clone ID: OTI9G2]

For Research Use Only. Not for use in diagnostic procedures.