

## Anti-PKC alpha PRKCA Rabbit Monoclonal Antibody

Catalog Number: M00743

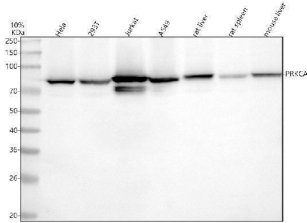
### Overview

Product Name	Anti-PKC alpha PRKCA Rabbit Monoclonal Antibody
Reactive Species	Human, Mouse, Rat
Description	Boster Bio Anti-PKC alpha PRKCA Rabbit Monoclonal Antibody catalog # M00743. Tested in WB, IHC, ICC/IF, IP, Flow Cytometry applications. This antibody reacts with Human, Mouse, Rat.
Application	Flow Cytometry, IP, IF, IHC, ICC, WB
Clonality	Monoclonal CHO-16
Formulation	Rabbit IgG in stabilizing components, phosphate buffered saline, pH 7.4, 150mM NaCl, 0.02% sodium azide and 50% glycerol. *This antibody is supplied in a stabilized formulation. Compatibility with conjugation reactions depends on the chemistry of the conjugation method used. For conjugation methods that are not compatible with the stabilizing components present in this formulation, a carrier-free antibody format is required.
Storage Instructions	Store at -20°C for one year. For short term storage and frequent use, store at 4°C for up to one month. Avoid repeated freeze-thaw cycles.
Host	Rabbit
Uniprot ID	P17252

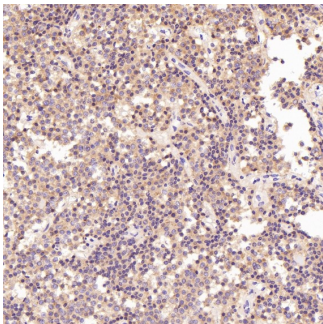
### Technical Details

Immunogen	A synthesized peptide derived from human PKC alpha
Isotype	Rabbit IgG
Form	Liquid
Concentration	0.5mg/ml
Purification	Affinity-chromatography
Suggested Dilutions	WB 1:500-2000 IHC 1:50-200 ICC/IF 1:50-200 IP 1:20 FC 1:20

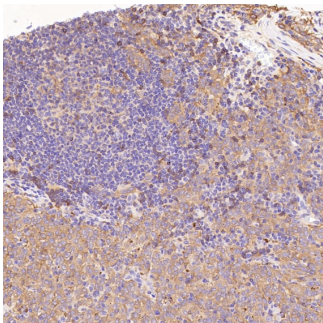
## Anti-PKC alpha PRKCA Rabbit Monoclonal Antibody (M00743) Images



Western blot analysis of PRKCA using anti-PRKCA antibody (M00743). Electrophoresis was performed on a 5-20% SDS-PAGE gel at 70V (Stacking gel) / 90V (Resolving gel) for 2-3 hours. The sample well of each lane was loaded with 30 ug of sample under reducing conditions. Lane 1: human HeLa whole cell lysates, Lane 2: human 293T whole cell lysates, Lane 3: human Jurkat whole cell lysates, Lane 4: human A549 whole cell lysates, Lane 5: rat liver tissue lysates, Lane 6: rat spleen tissue lysates, Lane 7: mouse liver tissue lysates. After electrophoresis, proteins were transferred to a nitrocellulose membrane at 150 mA for 50-90 minutes. Blocked the membrane with 5% non-fat milk/TBS for 1.5 hour at RT. The membrane was incubated with rabbit anti-PRKCA antigen affinity purified monoclonal antibody (Catalog # M00743) at 1:1000 overnight at 4°C, then washed with TBS-0.1%Tween 3 times with 5 minutes each and probed with a goat anti-rabbit IgG-HRP secondary antibody at a dilution of 1:500 for 1.5 hour at RT. The signal is developed using an Enhanced Chemiluminescent detection (ECL) kit (Catalog # EK1002) with Tanon 5200 system. A specific band was detected for PRKCA at approximately 77 kDa. The expected band size for PRKCA is at 77 kDa.

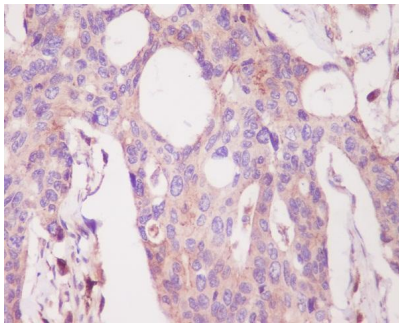
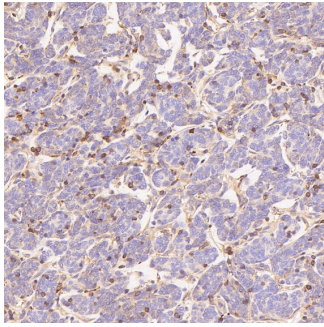


Immunohistochemical analysis of paraffin-embedded Human pituitary tumor, using the Antibody at 1:50 dilution.

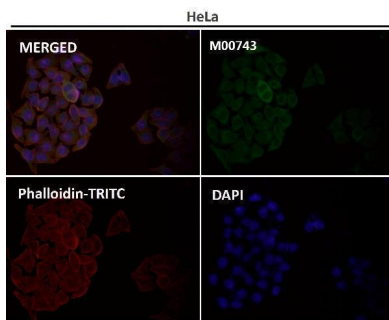


Immunohistochemical analysis of paraffin-embedded Human melanoma, using the Antibody at 1:50 dilution.

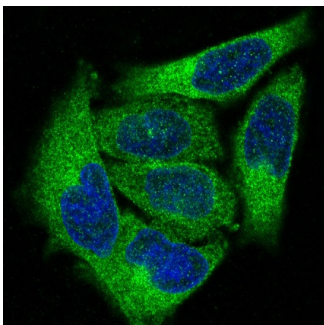
Immunohistochemical analysis of paraffin-embedded Human thymoma, using the Antibody at 1:300 dilution.



Immunohistochemical analysis of paraffin-embedded human colon, using PKC alpha Antibody.



Immunofluorescent analysis using the Antibody at 1:50 dilution.



Immunofluorescent analysis of HeLa cells, using PKC alpha Antibody .

## 5 Publications Citing This Product

1. PubMed ID: 26176219, Molecular Mechanism of the Cell Death Induced by the Histone Deacetylase Pan Inhibitor LBH589 (Panobinostat) in Wilms Tumor Cells
2. PubMed ID: 26279755, Different localization and expression of protein kinase C-beta in kidney cortex of diabetic nephropathy mice and its role in telmisartan treatment
3. PubMed ID: 19005168, Ge C, Yu M, Petite Jn, Zhang C. Biol Reprod. 2009 Mar;80(3):528-36. Doi: 10.1095/Biolreprod.108.072728. Epub 2008 Nov 12. Epidermal Growth Factor-Induced Proliferation Of Chicken Primordial Germ Cells: Involvement Of Calcium/Protein Kinase C And ...

Visit [bosterbio.com/anti-pkc-alpha-rabbit-monoclonal-antibody-m00743-boster.html](https://bosterbio.com/anti-pkc-alpha-rabbit-monoclonal-antibody-m00743-boster.html) to see all 5 publications.

## Submit a product review to Biocompare.com

Submit a review of this product to Biocompare.com to receive a \$20 Amazon.com giftcard! Your reviews help your fellow scientists make the right decisions. Thank you for your contribution.



Anti-PKC alpha PRKCA Rabbit Monoclonal Antibody

For Research Use Only. Not for use in diagnostic procedures.