

## Anti-Integrin beta 1 ITGB1 Rabbit Monoclonal Antibody

Catalog Number: M00772-1

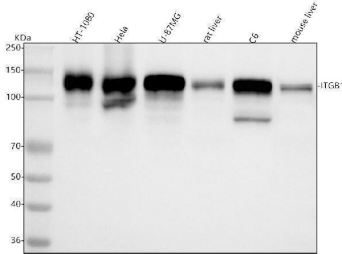
### Overview

Product Name	Anti-Integrin beta 1 ITGB1 Rabbit Monoclonal Antibody
Reactive Species	Human, Mouse, Rat
Description	Boster Bio Anti-Integrin beta 1 ITGB1 Rabbit Monoclonal Antibody catalog # M00772-1. Tested in WB, IHC applications. This antibody reacts with Human, Mouse, Rat.
Application	IHC, WB
Clonality	Monoclonal DDI-9
Formulation	Rabbit IgG in stabilizing components, phosphate buffered saline, pH 7.4, 150mM NaCl, 0.02% sodium azide and 50% glycerol. *This antibody is supplied in a stabilized formulation. Compatibility with conjugation reactions depends on the chemistry of the conjugation method used. For conjugation methods that are not compatible with the stabilizing components present in this formulation, a carrier-free antibody format is required.
Storage Instructions	Store at -20°C for one year. For short term storage and frequent use, store at 4°C for up to one month. Avoid repeated freeze-thaw cycles.
Host	Rabbit
Uniprot ID	P05556

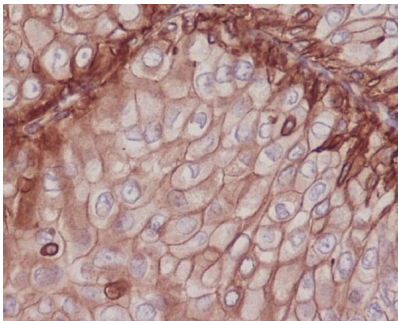
### Technical Details

Immunogen	A synthesized peptide derived from human Integrin beta 1
Isotype	Rabbit IgG
Form	Liquid
Concentration	0.5mg/ml
Purification	Affinity-chromatography
Suggested Dilutions	WB 1:500-2000 IHC 1:50-200

## Anti-Integrin beta 1 ITGB1 Rabbit Monoclonal Antibody (M00772-1) Images



Western blot analysis of Integrin beta 1 using anti-Integrin beta 1 antibody (M00772-1). Electrophoresis was performed on a 5-20% SDS-PAGE gel at 70V (Stacking gel) / 90V (Resolving gel) for 2-3 hours. The sample well of each lane was loaded with 30 ug of sample under reducing conditions. Lane 1: human HT-1080 whole cell lysates, Lane 2: human Hela whole cell lysates, Lane 3: human U-87MG whole cell lysates, Lane 4: rat liver tissue lysates, Lane 5: rat C6 whole cell lysates, Lane 6: mouse liver tissue lysates. After electrophoresis, proteins were transferred to a nitrocellulose membrane at 150 mA for 50-90 minutes. Blocked the membrane with 5% non-fat milk/TBS for 1.5 hour at RT. The membrane was incubated with rabbit anti-Integrin beta 1 antigen affinity purified monoclonal antibody (Catalog # M00772-1) at 1:500 overnight at 4°C, then washed with TBS-0.1%Tween 3 times with 5 minutes each and probed with a goat anti-rabbit IgG-HRP secondary antibody at a dilution of 1:500 for 1.5 hour at RT. The signal is developed using an Enhanced Chemiluminescent detection (ECL) kit (Catalog # EK1002) with Tanon 5200 system. A specific band was detected for Integrin beta 1 at approximately 140 kDa. The expected band size for Integrin beta 1 is at 88 kDa.



Immunohistochemical analysis of paraffin-embedded human breast cancer, using Integrin beta 1 Antibody.

## 6 Publications Citing This Product

1. PubMed ID: 22211239, Yin D, Tian L, Ye Y, Li K, Wang J, Cheng P, Chen A, Guo F, Huang H. Int J Mol Med. 2012 Apr;29(4):587-92. Doi: 10.3892/Ijmm.2011.871. Epub 2011 Dec 29. Nanog And  $\beta$ -Catenin: A New Convergence Point In EpSC Proliferation And Differentiation.
2. PubMed ID: 26616638, Isolation and morphological characterization of ovine amniotic fluid mesenchymal stem cells
3. PubMed ID: 24465646, Lin H, Yang Y, Wang Y, Wang L, Zhou X, Liu J, Peng D. Plos One. 2014 Jan 21;9(1):E85672. Doi: 10.1371/Journal.Pone.0085672. Ecollection 2014. Effect Of Mixed Transplantation Of Autologous And Allogeneic Microskin Grafts On Wound Healing In A Rat M...

Visit [bosterbio.com/anti-integrin-beta-1-rabbit-monoclonal-antibody-m00772-1-boster.html](http://bosterbio.com/anti-integrin-beta-1-rabbit-monoclonal-antibody-m00772-1-boster.html) to see all 6 publications.

Submit a product review to [Biocompare.com](http://Biocompare.com)

Submit a review of this product to Biocompare.com to receive a \$20 Amazon.com giftcard! Your reviews help your fellow scientists make the right decisions. Thank you for your contribution.



Anti-Integrin beta 1 ITGB1 Rabbit Monoclonal Antibody

For Research Use Only. Not for use in diagnostic procedures.