

## Anti-Integrin beta 1 ITGB1 Rabbit Monoclonal Antibody

Catalog Number: M00772-2

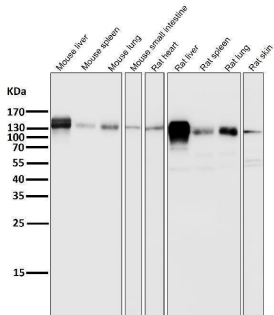
### Overview

Product Name	Anti-Integrin beta 1 ITGB1 Rabbit Monoclonal Antibody
Reactive Species	Human
Description	Boster Bio Anti-Integrin beta 1 ITGB1 Rabbit Monoclonal Antibody catalog # M00772-2. Tested in WB, IHC applications. This antibody reacts with Human.
Application	IHC, WB
Clonality	Monoclonal AFI-9
Formulation	Rabbit IgG in stabilizing components, phosphate buffered saline, pH 7.4, 150mM NaCl, 0.02% sodium azide and 50% glycerol. *This antibody is supplied in a stabilized formulation. Compatibility with conjugation reactions depends on the chemistry of the conjugation method used. For conjugation methods that are not compatible with the stabilizing components present in this formulation, a carrier-free antibody format is required.
Storage Instructions	Store at -20°C for one year. For short term storage and frequent use, store at 4°C for up to one month. Avoid repeated freeze-thaw cycles.
Host	Rabbit
Uniprot ID	P05556

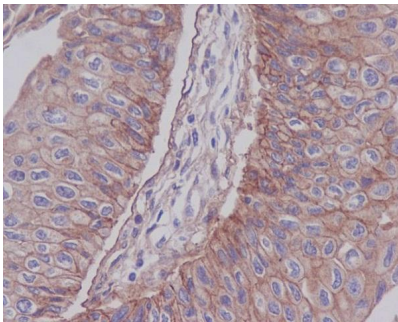
### Technical Details

Immunogen	A synthesized peptide derived from human Integrin beta 1
Isotype	Rabbit IgG
Form	Liquid
Concentration	0.5mg/ml
Purification	Affinity-chromatography
Suggested Dilutions	WB 1:500-1:2000 IHC 1:50-1:200

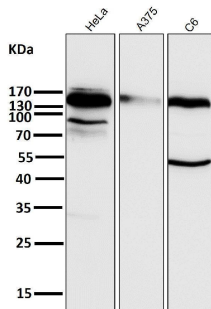
## Anti-Integrin beta 1 ITGB1 Rabbit Monoclonal Antibody (M00772-2) Images



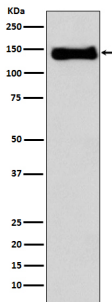
All lanes use the Antibody at 1:2K dilution for 1 hour at room temperature.



Immunohistochemical analysis of paraffin-embedded human bladder carcinoma, using Integrin beta 1 Antibody.



All lanes use the Antibody at 1:2K dilution for 1 hour at room temperature.



Western blot analysis of using Integrin beta1 expression in U937 cell lysate.

### 3 Publications Citing This Product

1. PubMed ID: 26616638, Isolation and morphological characterization of ovine amniotic fluid mesenchymal stem cells
2. PubMed ID: 26956998, Suppression of A549 cell proliferation and metastasis by calycosin via inhibition of the PKC- $\zeta$ /ERK1/2 pathway: An in vitro investigation

3. PubMed ID: 26986690, Abnormalities in the basement membrane structure promote basal keratinocytes in the epidermis of hypertrophic scars to adopt a proliferative phenotype

Visit [bosterbio.com/anti-integrin-beta-1-rabbit-monoclonal-antibody-m00772-2-boster.html](https://bosterbio.com/anti-integrin-beta-1-rabbit-monoclonal-antibody-m00772-2-boster.html) to see all 3 publications.

## Submit a product review to Biocompare.com

Submit a review of this product to Biocompare.com to receive a \$20 Amazon.com giftcard! Your reviews help your fellow scientists make the right decisions. Thank you for your contribution.



Anti-Integrin beta 1 ITGB1 Rabbit Monoclonal Antibody

For Research Use Only. Not for use in diagnostic procedures.