

Anti-Integrin beta 1 (ITGB1) Mouse Monoclonal Antibody [Clone ID: OTI9B5]

Catalog Number: M00772-4

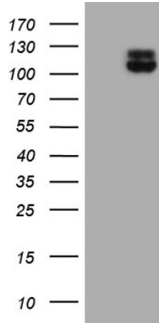
Overview

Product Name	Anti-Integrin beta 1 (ITGB1) Mouse Monoclonal Antibody [Clone ID: OTI9B5]
Reactive Species	Human, Mouse, Rat
Description	Boster Bio ITGB1 mouse monoclonal antibody, clone OTI9B5. Catalog# M00772-4. Tested in FC, WB. This antibody reacts with Human, Mouse, Rat.
Application	Flow Cytometry, WB
Clonality	Monoclonal OTI9B5
Formulation	PBS (pH 7.3) containing 1% stabilizing protein, 50% glycerol and 0.02% sodium azide. This antibody is supplied in a stabilized formulation. Compatibility with conjugation reactions depends on the chemistry of the conjugation method used. For conjugation methods that are not compatible with the stabilizing components present in this formulation, a carrier-free antibody format is required.
Storage Instructions	Store at -20°C as received.
Host	Mouse
Uniprot ID	P05556

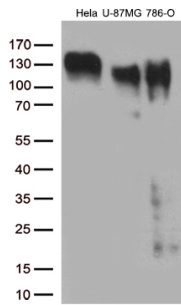
Technical Details

Immunogen	Full length human recombinant protein of human ITGB1 (NP_002202) produced in HEK293T cell.
Isotype	IgG2b
Concentration	1 mg/ml
Purification	Purified from mouse ascites fluids or tissue culture supernatant by affinity chromatography (protein A/G)
Suggested Dilutions	WB 1:500 IHC 1:150

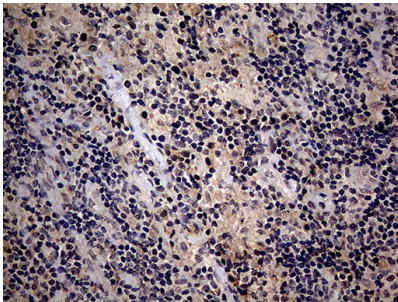
Anti-Integrin beta 1 (ITGB1) Mouse Monoclonal Antibody [Clone ID: OTI9B5] (M00772-4) Images



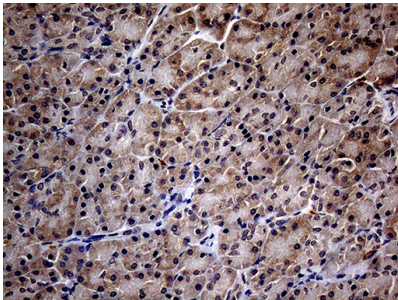
HEK293T cells were transfected with the pCMV6-ENTRY control (Left lane) or pCMV6-ENTRY ITGB1 (Right lane) cDNA for 48 hrs and lysed. Equivalent amounts of cell lysates (5 ug per lane) were separated by SDS-PAGE and immunoblotted with anti-ITGB1 (1:500).



Western blot analysis of extracts (35ug) from 3 different cell lines by using anti-ITGB1 monoclonal antibody (1:500).

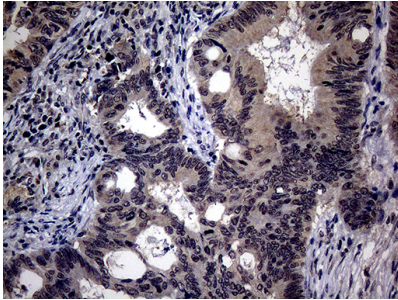
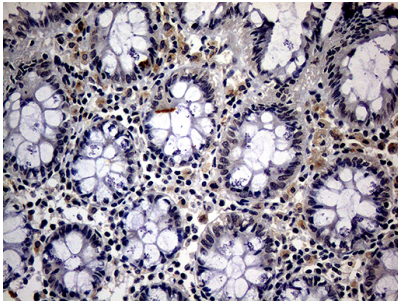


Immunohistochemical staining of paraffin-embedded Carcinoma of Human lung tissue using anti-ITGB1 mouse monoclonal antibody. (Heat-induced epitope retrieval by 1mM EDTA in 10mM Tris buffer (pH8.5) at 120Å°C for 3min)

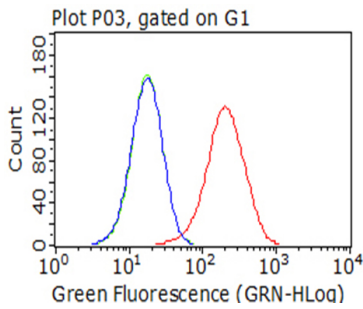


Immunohistochemical staining of paraffin-embedded Human pancreas tissue within the normal limits using anti-ITGB1 mouse monoclonal antibody. (Heat-induced epitope retrieval by 1mM EDTA in 10mM Tris buffer (pH8.5) at 120Å°C for 3min)

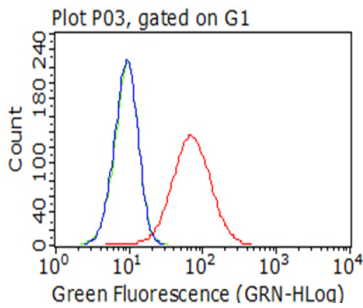
Immunohistochemical staining of paraffin-embedded Human colon tissue within the normal limits using anti-ITGB1 mouse monoclonal antibody. (Heat-induced epitope retrieval by 1mM EDTA in 10mM Tris buffer (pH8.5) at 120Å°C for 3min)



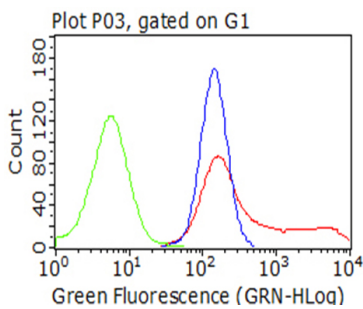
Immunohistochemical staining of paraffin-embedded Adenocarcinoma of Human colon tissue using anti-ITGB1 mouse monoclonal antibody. (Heat-induced epitope retrieval by 1mM EDTA in 10mM Tris buffer (pH8.5) at 120°C for 3min)



Flow cytometric Analysis of living U-87MG cells

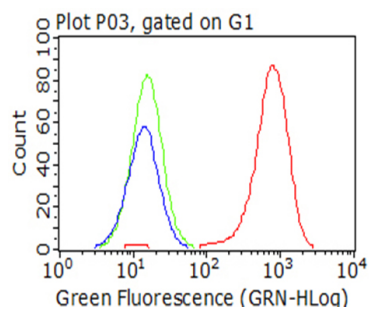


Flow cytometric Analysis of living 786-O cells



HEK293T cells transfected with either ITGB1 (Myc-DDK-tagged) overexpress plasmid (Red)

Flow cytometric Analysis of living Hela cells



Submit a product review to Biocompare.com

Submit a review of this product to Biocompare.com to receive a \$20 Amazon.com giftcard! Your reviews help your fellow scientists make the right decisions. Thank you for your contribution.



Anti-Integrin beta 1 (ITGB1) Mouse Monoclonal Antibody [Clone ID: OTI9B5]

For Research Use Only. Not for use in diagnostic procedures.