

## Anti-MAD2L1/Mad2 Monoclonal Antibody

Catalog Number: M00785

### About MAD2L1

MAD2L1 (also called mitotic spindle assembly checkpoint protein, MAD2A, MAD2-like 1 and HsMAD2) is a component of the mitotic spindle assembly checkpoint monitors the process of kinetochore-spindle attachment and delays the onset of anaphase when this process is not complete. MAD2L1 inhibits the activity of the anaphase-promoting complex by sequestering CDC20 until all chromosomes are aligned at the metaphase plate. MAD2L1 is related to the MAD2L2 gene located on chromosome 1. This protein has a nuclear localization. A MAD2 pseudogene has been mapped to chromosome 14.

### Overview

Product Name	Anti-MAD2L1/Mad2 Monoclonal Antibody
Reactive Species	Human
Description	Boster Bio Anti-MAD2L1/Mad2 Monoclonal Antibody (Catalog # M00785). Tested in IP, WB applications. This antibody reacts with Human.
Application	ELISA, IP, WB
Clonality	Monoclonal Clone: 17D10 IgG1
Formulation	0.02 M Potassium Phosphate, 0.15 M Sodium Chloride, pH 7.2, 0.01% (w/v) Sodium Azide
Storage Instructions	Store vial at -20°C prior to opening. Aliquot contents and freeze at -20°C or below for extended storage. Avoid cycles of freezing and thawing. Centrifuge product if not completely clear after standing at room temperature. This product is stable for several weeks at 4°C as an undiluted liquid. Dilute only prior to immediate use. Expiration date is one (1) year from date of opening. (Ship on dry ice.)
Host	Mouse
Uniprot ID	Q13257

### Technical Details

Immunogen	This protein A purified monoclonal antibody was produced by repeated immunizations with full-length recombinant human MAD2L1 protein.
Predicted Reactive Species	Canine
Isotype	IgG1
Form	Liquid (sterile filtered)
Concentration	1.0 mg/mL by UV absorbance at 280 nm
Purification	This Protein A purified antibody is directed against human MAD2L1 protein. The product was

purified from tissue culture supernatant by chromatography. This antibody has only been tested on human cells. Reactivity against homologues from other sources is not known.

Suggested Dilutions

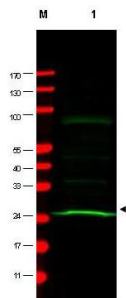
ELISA: 1:5,000 - 1:20,000

IP: 1:100

WB: 1:200 - 1:2,000

This protein A purified antibody has been tested for use in immunoprecipitation and by western blot. This antibody is not applicable for immunofluorescence microscopy. Specific conditions for reactivity should be optimized by the end user. Expect a predominant band at ~ 24 kDa corresponding to full-length protein by western blotting in the appropriate cell lysate or extract.

## Anti-MAD2L1/Mad2 Monoclonal Antibody (M00785) Images



Western blot using Boster's Mab anti-MAD2L1 antibody shows detection of a band at ~24 kDa (arrowhead) corresponding to MAD2L1 present in a HeLa whole cell lysate. Approximately 75 µg of lysate was separated by 4-20% TG SDS-PAGE. After blocking, the membrane was probed overnight at 4°C with the primary antibody diluted to 1:200. The membrane was washed and reacted with a 1:5,000 dilution of IRDye™ 800 conjugated Sh-a-Mouse IgG [H&L] for 45 min at room temperature (800 nm channel, green). Molecular weight estimation was made by comparison to prestained MW markers in lane M (700 nm channel, red). IRDye™ 800 fluorescence image was captured using the Odyssey® Infrared Imaging System developed by LI-COR. IRDye is a trademark of LI-COR, Inc. Other detection systems will yield similar results.

### Submit a product review to [Biocompare.com](https://www.biocompare.com)

Submit a review of this product to [Biocompare.com](https://www.biocompare.com) to receive a \$20 Amazon.com giftcard! Your reviews help your fellow scientists make the right decisions. Thank you for your contribution.



Anti-MAD2L1/Mad2 Monoclonal Antibody

For Research Use Only. Not for use in diagnostic procedures.