

## Anti-MAD2 (MAD2L1) Mouse Monoclonal Antibody [Clone ID: OTI4D2]

Catalog Number: M00785-1

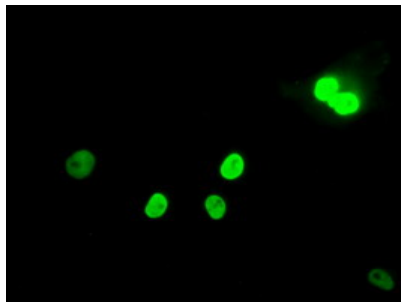
### Overview

Product Name	Anti-MAD2 (MAD2L1) Mouse Monoclonal Antibody [Clone ID: OTI4D2]
Reactive Species	Human, Mouse, Rat
Description	Boster Bio MAD2L1 (MAD2) mouse monoclonal antibody, clone OTI4D2 (formerly 4D2). Catalog# M00785-1. Tested in IF, WB. This antibody reacts with Human, Mouse, Rat.
Conjugate	Unconjugated
Application	IF, WB
Clonality	Monoclonal OTI4D2
Formulation	PBS (pH 7.3) containing 1% stabilizing protein, 50% glycerol and 0.02% sodium azide. This antibody is supplied in a stabilized formulation. Compatibility with conjugation reactions depends on the chemistry of the conjugation method used. For conjugation methods that are not compatible with the stabilizing components present in this formulation, a carrier-free antibody format is required.
Storage Instructions	Store at -20°C for one year. For short term storage and frequent use, store at 4°C for up to one month. Avoid repeated freeze-thaw cycles.
Host	Mouse
Uniprot ID	Q13257

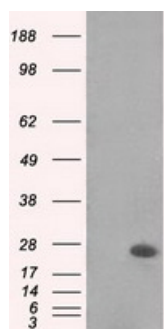
### Technical Details

Immunogen	Full length human recombinant protein of human MAD2L1 (NP_002349) produced in HEK293T cell.
Isotype	IgG2a
Concentration	1 mg/ml
Purification	Purified from mouse ascites fluids or tissue culture supernatant by affinity chromatography (protein A/G)
Suggested Dilutions	WB: 1:1000 IF: 1:100

## Anti-MAD2 (MAD2L1) Mouse Monoclonal Antibody [Clone ID: OTI4D2] (M00785-1) Images



Anti-MAD2L1 mouse monoclonal antibody (M00785-1) immunofluorescent staining of COS7 cells transiently transfected by pCMV6-ENTRY MAD2L1.



HEK293T cells were transfected with the pCMV6-ENTRY control (Left lane) or pCMV6-ENTRY MAD2L1 (Right lane) cDNA for 48 hrs and lysed. Equivalent amounts of cell lysates (5 ug per lane) were separated by SDS-PAGE and immunoblotted with anti-MAD2L1.

### Submit a product review to Biocompare.com

Submit a review of this product to Biocompare.com to receive a \$20 Amazon.com giftcard! Your reviews help your fellow scientists make the right decisions. Thank you for your contribution.



Anti-MAD2 (MAD2L1) Mouse Monoclonal Antibody [Clone ID: OTI4D2]

For Research Use Only. Not for use in diagnostic procedures.