

Anti-ER-beta1 (Estrogen Receptor beta-1) ESR2 Monoclonal Antibody

Catalog Number: M00786

About ESR2

Estrogen receptors (ER) are members of the steroid/thyroid hormone receptor superfamily of ligand-activated transcription factors. Estrogen receptors, including ER-alpha and ER-beta, contain DNA binding and ligand binding domains and are critically involved in regulating the normal function of reproductive tissues. They are located in the nucleus, though some estrogen receptors associate with the cell surface membrane and can be rapidly activated by exposure of cells to estrogen. ER-alpha and ER-beta are differentially activated by various ligands. Receptor-ligand interactions trigger a cascade of events, including dissociation from heat shock proteins, receptor dimerization, phosphorylation and the association of the hormone activated receptor with specific regulatory elements in target genes. Evidence suggests that ER-alpha and ER-beta may be regulated by distinct mechanisms even though they share many functional characteristics.

Overview

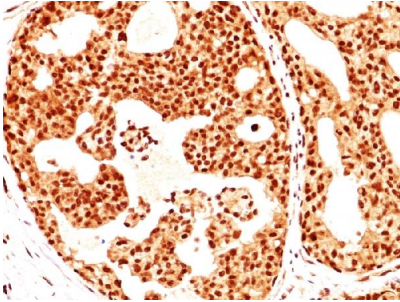
Product Name	Anti-ER-beta1 (Estrogen Receptor beta-1) ESR2 Monoclonal Antibody
Reactive Species	Human, Monkey, Mouse, Pig, Rat, Sheep, Horse
Description	Boster Bio Anti-ER-beta1 (Estrogen Receptor beta-1) ESR2 Monoclonal Antibody (Catalog # M00786). Tested in Flow Cytometry, IF, WB, IHC applications. This antibody reacts with Human, Monkey, Mouse, Rat, Pig, Horse, Sheep.
Conjugate	Biotin
Application	Flow Cytometry, IF, IHC, WB
Clonality	Monoclonal Clone: ERb455
Formulation	Prepared in 10mM PBS with 0.05% BSA & 0.05% azide. Also available WITHOUT BSA & azide at 1.0mg/ml.
Storage Instructions	Antibody with azide - store at 2 to 8°C. Antibody without azide - store at -20 to -80°C. Antibody is stable for 24 months. Non-hazardous. No MSDS required.
Host	Mouse
Uniprot ID	Q92731

Technical Details

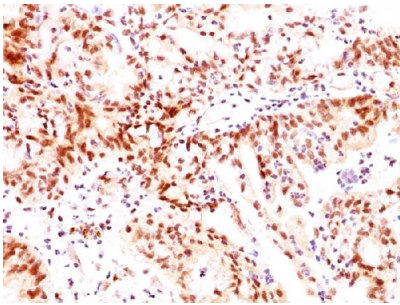
Immunogen	C-terminus fragment of recombinant human estrogen receptor beta protein
Predicted Reactive Species	Bovine, Canine, Mouse, Orangutan, Pig, Rabbit, Rat, Deer
Cross Reactivity	Does not cross-react with primate, avian or amphibian GR.
Isotype	IgG2a, kappa

Form	Liquid
Concentration	Purified antibody with BSA and azide at 200ug/ml
Purification	200ug/ml of antibody purified from Bioreactor Concentrate by Protein A/G.
Suggested Dilutions	<p>Dilute the sample so that the expected range of concentrations fall within the detection range of this kit.</p> <p>If the expected range of concentration is unknown, a pilot test should be conducted to decide the optimal dilution ratio for your samples.</p> <p>Some PubMed article(s) citing the expression level of this target are as follows:</p> <p>Boster Bio's internal QC testing used:</p> <p>Flow Cytometry (1-2ug/million cells)</p> <p>Immunofluorescence (1-2ug/ml)</p> <p>Western Blot (1-2ug/ml)</p> <p>Immunohistochemistry (Formalin-fixed) (1-2ug/ml for 30 minutes at RT) (Staining of formalin-fixed tissues requires heating tissue sections in 10mM Tris with 1mM EDTA, pH 9.0, for 45 min at 95&degC followed by cooling at RT for 20 minutes)</p> <p>Optimal dilution for a specific application should be determined.</p>

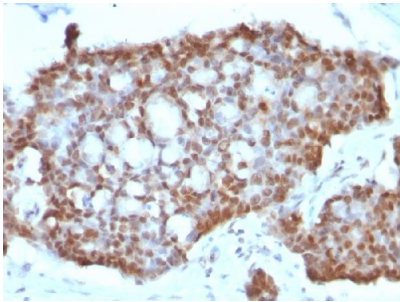
Anti-ER-beta1 (Estrogen Receptor beta-1) ESR2 Monoclonal Antibody (M00786) Images



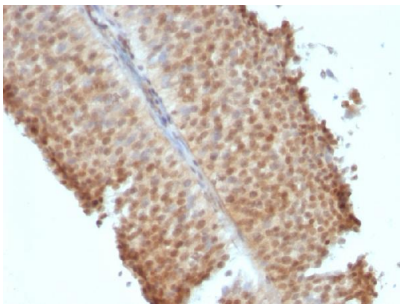
Formalin-fixed, paraffin-embedded human Breast Carcinoma stained with Anti-ER-beta1 Mouse Monoclonal Antibody (ERb455).



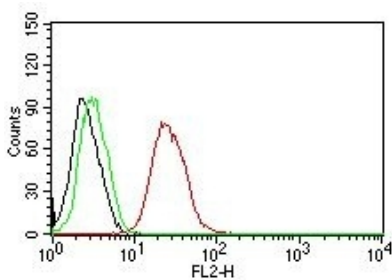
Formalin-fixed, paraffin-embedded human Ovarian Carcinoma stained with Anti-ER-beta1 Mouse Monoclonal Antibody (ERb455).



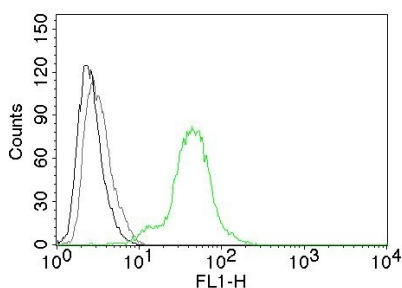
Formalin-fixed, paraffin-embedded human Gastric Carcinoma stained with Anti-ER-beta1 Mouse Monoclonal Antibody (ERb455).



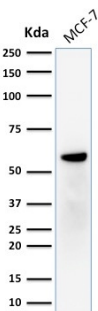
Formalin-fixed, paraffin-embedded human Bladder Carcinoma stained with Anti-ER-beta1 Mouse Monoclonal Antibody (ERb455).



Flow Cytometry for human ER-beta on MCF-7 cells. Black: cells alone; Green: Isotype Control; Red: PE-labeled ER-beta1 Mouse Monoclonal Antibody (ERb455).



Flow Cytometry of human ER beta on BT474 cells. Black: cells alone; Grey: Isotype Control; Green: AF488-labeled ER beta1 Mouse Monoclonal Antibody (ERb455).



Western Blot Analysis of human MCF-7 cell lysate using Anti-ER-beta1 Mouse Monoclonal Antibody (ERb455).

Submit a product review to Biocompare.com

Submit a review of this product to Biocompare.com to receive a \$20 Amazon.com giftcard! Your reviews help your fellow scientists make the right decisions. Thank you for your contribution.



Anti-ER-beta1 (Estrogen Receptor beta-1) ESR2 Monoclonal Antibody