

Anti-Estrogen Receptor beta ESR2 Rabbit Monoclonal Antibody

Catalog Number: M00786-1

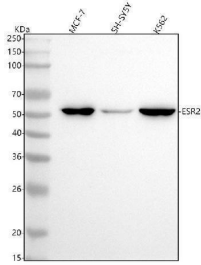
Overview

Product Name	Anti-Estrogen Receptor beta ESR2 Rabbit Monoclonal Antibody
Reactive Species	Human
Description	Boster Bio Anti-Estrogen Receptor beta ESR2 Rabbit Monoclonal Antibody catalog # M00786-1. Tested in WB, IHC applications. This antibody reacts with Human.
Application	IHC, WB
Clonality	Monoclonal IDI-5
Formulation	Rabbit IgG in stabilizing components, phosphate buffered saline, pH 7.4, 150mM NaCl, 0.02% sodium azide and 50% glycerol. *This antibody is supplied in a stabilized formulation. Compatibility with conjugation reactions depends on the chemistry of the conjugation method used. For conjugation methods that are not compatible with the stabilizing components present in this formulation, a carrier-free antibody format is required.
Storage Instructions	Store at -20°C for one year. For short term storage and frequent use, store at 4°C for up to one month. Avoid repeated freeze-thaw cycles.
Host	Rabbit
Uniprot ID	Q92731

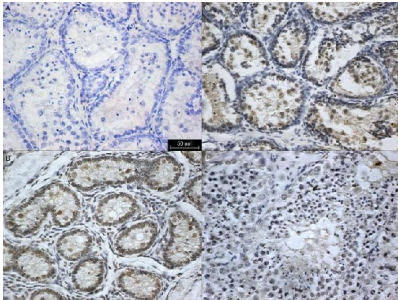
Technical Details

Immunogen	A synthesized peptide derived from human Estrogen Receptor beta
Isotype	Rabbit IgG
Form	Liquid
Concentration	0.5mg/ml
Purification	Affinity-chromatography
Suggested Dilutions	WB 1:500-2000 IHC 1:50-200

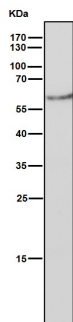
Anti-Estrogen Receptor beta ESR2 Rabbit Monoclonal Antibody (M00786-1) Images



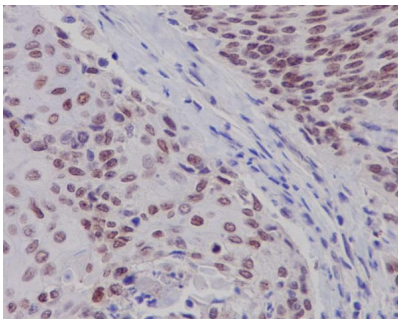
Western blot analysis of ESR2 using anti-ESR2 antibody (M00786-1). Electrophoresis was performed on a 5-20% SDS-PAGE gel at 70V (Stacking gel) / 90V (Resolving gel) for 2-3 hours. The sample well of each lane was loaded with 30 ug of sample under reducing conditions. Lane 1: human MCF-7 whole cell lysates, Lane 2: human SH-SY5Y whole cell lysates, Lane 3: human K562 whole cell lysates. After electrophoresis, proteins were transferred to a nitrocellulose membrane at 150 mA for 50-90 minutes. Blocked the membrane with 5% non-fat milk/TBS for 1.5 hour at RT. The membrane was incubated with rabbit anti-ESR2 antigen affinity purified monoclonal antibody (Catalog # M00786-1) at 1:500 overnight at 4°C, then washed with TBS-0.1%Tween 3 times with 5 minutes each and probed with a goat anti-rabbit IgG-HRP secondary antibody at a dilution of 1:500 for 1.5 hour at RT. The signal is developed using an Enhanced Chemiluminescent detection (ECL) kit (Catalog # EK1002) with Tanon 5200 system. A specific band was detected for ESR2 at approximately 59 kDa. The expected band size for ESR2 is at 59 kDa.



Immuno-expression of AR (A:3.5yr.) and ERbeta (B: 0.1yr., C: 3.5yr. and D: 8yr.) in testes. Scale bar = 50 um. Index in PubMed under a CC BY license. PMID: 31966281



All lanes use the Antibody at 1:2K dilution for 1 hour at room temperature.



Immunohistochemical analysis of paraffin-embedded human cervix cancer, using Estrogen Receptor beta Antibody.

Submit a product review to Biocompare.com

Submit a review of this product to Biocompare.com to receive a \$20 Amazon.com giftcard! Your reviews help your fellow scientists make the right decisions. Thank you for your contribution.



Anti-Estrogen Receptor beta ESR2 Rabbit Monoclonal Antibody

For Research Use Only. Not for use in diagnostic procedures.