

Anti-Fibrinogen gamma chain (FGG) Mouse Monoclonal Antibody [Clone ID: OTI2D2]

Catalog Number: M00790

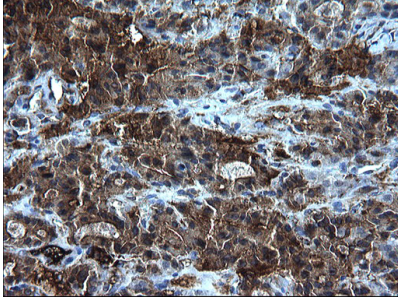
Overview

Product Name	Anti-Fibrinogen gamma chain (FGG) Mouse Monoclonal Antibody [Clone ID: OTI2D2]
Reactive Species	Human, Monkey, Mouse
Description	Boster Bio FGG mouse monoclonal antibody, clone OTI2D2 (formerly 2D2). Catalog# M00790. Tested in IHC, WB. This antibody reacts with Human, Monkey, Mouse.
Conjugate	Unconjugated
Application	IHC, WB
Clonality	Monoclonal OTI2D2
Formulation	PBS (pH 7.3) containing 1% stabilizing protein, 50% glycerol and 0.02% sodium azide. This antibody is supplied in a stabilized formulation. Compatibility with conjugation reactions depends on the chemistry of the conjugation method used. For conjugation methods that are not compatible with the stabilizing components present in this formulation, a carrier-free antibody format is required.
Storage Instructions	Store at -20°C for one year. For short term storage and frequent use, store at 4°C for up to one month. Avoid repeated freeze-thaw cycles.
Host	Mouse
Uniprot ID	P02679

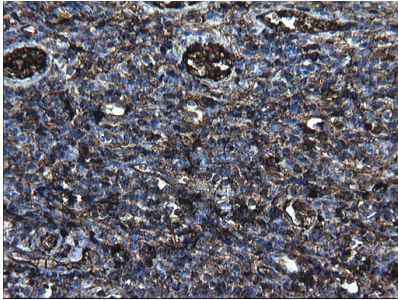
Technical Details

Immunogen	Full length human recombinant protein of human FGG (NP_000500) produced in HEK293T cell.
Isotype	IgG1
Concentration	1 mg/ml
Purification	Purified from mouse ascites fluids or tissue culture supernatant by affinity chromatography (protein A/G)
Suggested Dilutions	WB 1:400~4000 IHC 1:150

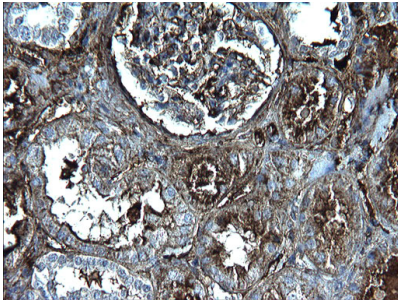
Anti-Fibrinogen gamma chain (FGG) Mouse Monoclonal Antibody [Clone ID: OTI2D2] (M00790) Images



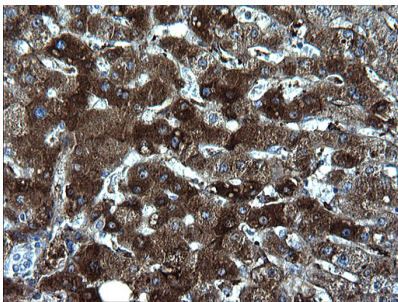
Immunohistochemical staining of paraffin-embedded Carcinoma of Human thyroid tissue using anti-FGG mouse monoclonal antibody. (Heat-induced epitope retrieval by 1 mM EDTA in 10mM Tris)



Immunohistochemical staining of paraffin-embedded Human lymph node tissue within the normal limits using anti-FGG mouse monoclonal antibody. (Heat-induced epitope retrieval by 1 mM EDTA in 10mM Tris)

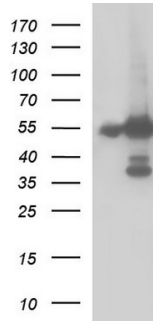
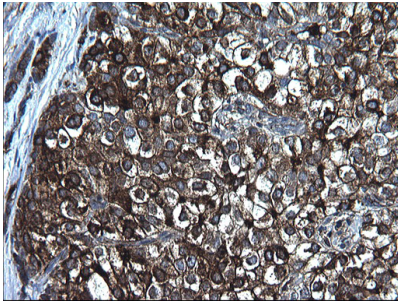


Immunohistochemical staining of paraffin-embedded Human Kidney tissue within the normal limits using anti-FGG mouse monoclonal antibody. (Heat-induced epitope retrieval by 1 mM EDTA in 10mM Tris)

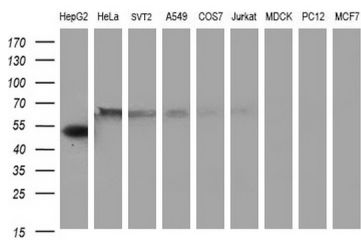


Immunohistochemical staining of paraffin-embedded Human liver tissue within the normal limits using anti-FGG mouse monoclonal antibody. (Heat-induced epitope retrieval by 1 mM EDTA in 10mM Tris)

Immunohistochemical staining of paraffin-embedded Carcinoma of Human liver tissue using anti-FGG mouse monoclonal antibody. (Heat-induced epitope retrieval by 1 mM EDTA in 10mM Tris)



HEK293T cells were transfected with the pCMV6-ENTRY control (Left lane) or pCMV6-ENTRY FG (Right lane) cDNA for 48 hrs and lysed. Equivalent amounts of cell lysates (5 ug per lane) were separated by SDS-PAGE and immunoblotted with anti-FG.



Western blot analysis of extracts (35ug) from 9 different cell lines by using anti-FG monoclonal antibody (HepG2: human; HeLa: human; SVT2: mouse; A549: human; COS7: monkey; Jurkat: human; MDCK: canine; PC12: rat; MCF7: human).

Submit a product review to Biocompare.com

Submit a review of this product to Biocompare.com to receive a \$20 Amazon.com giftcard! Your reviews help your fellow scientists make the right decisions. Thank you for your contribution.



Anti-Fibrinogen gamma chain (FGG) Mouse Monoclonal Antibody [Clone ID: OT12D2]

For Research Use Only. Not for use in diagnostic procedures.