

Anti-ERG Rabbit Monoclonal Antibody

Catalog Number: M00793

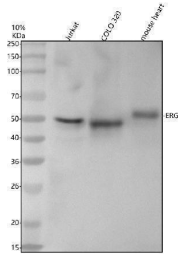
Overview

| | |
|----------------------|--|
| Product Name | Anti-ERG Rabbit Monoclonal Antibody |
| Reactive Species | Human, Mouse, Rat |
| Description | Boster Bio Anti-ERG Rabbit Monoclonal Antibody catalog # M00793. Tested in WB, IHC, ICC/IF applications. This antibody reacts with Human, Mouse, Rat. |
| Application | IF, IHC, ICC, WB |
| Clonality | Monoclonal ACH-5 |
| Formulation | Rabbit IgG in stabilizing components, phosphate buffered saline, pH 7.4, 150mM NaCl, 0.02% sodium azide and 50% glycerol. *This antibody is supplied in a stabilized formulation. Compatibility with conjugation reactions depends on the chemistry of the conjugation method used. For conjugation methods that are not compatible with the stabilizing components present in this formulation, a carrier-free antibody format is required. |
| Storage Instructions | Store at -20°C for one year. For short term storage and frequent use, store at 4°C for up to one month. Avoid repeated freeze-thaw cycles. |
| Host | Rabbit |
| Uniprot ID | P11308 |

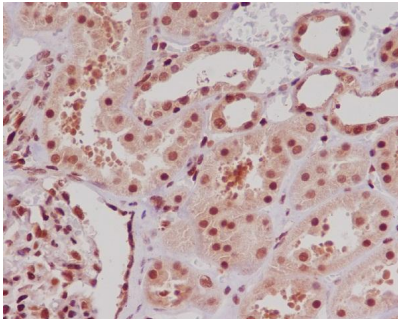
Technical Details

| | |
|---------------------|--|
| Immunogen | A synthesized peptide derived from human ERG |
| Isotype | Rabbit IgG |
| Form | Liquid |
| Concentration | 0.5mg/ml |
| Purification | Affinity-chromatography |
| Suggested Dilutions | WB 1:500-2000 IHC 1:50-200 ICC/IF 1:50-200 |

Anti-ERG Rabbit Monoclonal Antibody (M00793) Images



Western blot analysis of ERG using anti-ERG antibody (M00793). Electrophoresis was performed on a 10% SDS-PAGE gel at 80V (Stacking gel) / 120V (Resolving gel) for 2 hours. The sample well of each lane was loaded with 30 ug of sample under reducing conditions. Lane 1: human Jurkat whole cell lysates, Lane 2: human COLO-320 whole cell lysates, Lane 3: mouse heart tissue lysates. After electrophoresis, proteins were transferred to a nitrocellulose membrane at 150 mA for 50-90 minutes. Blocked the membrane with 5% non-fat milk/TBS for 1.5 hour at RT. The membrane was incubated with rabbit anti-ERG antigen affinity purified monoclonal antibody (M00793) at 1: 500 overnight at 4°C, then washed with TBS-0.1%Tween 3 times with 5 minutes each and probed with a goat anti-rabbit IgG-HRP secondary antibody at a dilution of 1:5000 for 1.5 hour at RT. The signal is developed using an ECL Plus Western Blotting Substrate (Catalog # AR1196-200) with Tanon 5200 system. A specific band was detected for ERG at approximately 55 kDa. The expected band size for ERG is at 55 kDa.



Immunohistochemical analysis of paraffin-embedded human kidney, using ERG Antibody.

Submit a product review to Biocompare.com

Submit a review of this product to Biocompare.com to receive a \$20 Amazon.com giftcard! Your reviews help your fellow scientists make the right decisions. Thank you for your contribution.



Anti-ERG Rabbit Monoclonal Antibody

For Research Use Only. Not for use in diagnostic procedures.