

Anti-SHC (SHC1) Mouse Monoclonal Antibody [Clone ID: OTI3A1]

Catalog Number: M00796

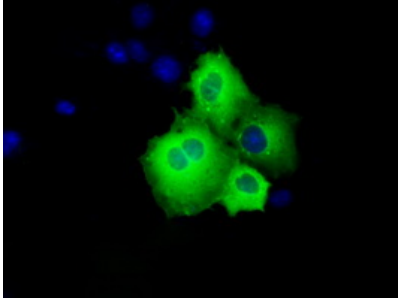
Overview

Product Name	Anti-SHC (SHC1) Mouse Monoclonal Antibody [Clone ID: OTI3A1]
Reactive Species	Human, Mouse, Rat
Description	Boster Bio Anti-SHC1 (SHC) mouse monoclonal antibody, clone OTI3A1 (formerly 3A1). Catalog# M00796. Tested in IF, IHC, IP, WB. This antibody reacts with Human, Mouse, Rat.
Conjugate	Unconjugated
Application	IP, IF, IHC, WB
Clonality	Monoclonal OTI3A1
Formulation	PBS (pH 7.3) containing 1% stabilizing protein, 50% glycerol and 0.02% sodium azide. This antibody is supplied in a stabilized formulation. Compatibility with conjugation reactions depends on the chemistry of the conjugation method used. For conjugation methods that are not compatible with the stabilizing components present in this formulation, a carrier-free antibody format is required.
Storage Instructions	Store at -20°C for one year. For short term storage and frequent use, store at 4°C for up to one month. Avoid repeated freeze-thaw cycles.
Host	Mouse
Uniprot ID	P29353

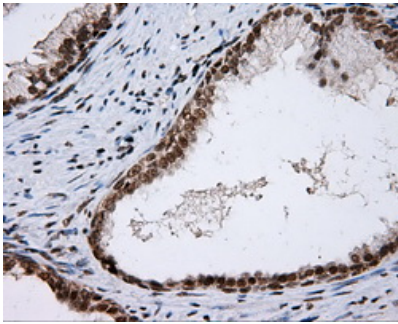
Technical Details

Immunogen	Full length human recombinant protein of human SHC1 (NP_003020) produced in HEK293T cell.
Isotype	IgG1
Concentration	1 mg/ml
Purification	Purified from mouse ascites fluids or tissue culture supernatant by affinity chromatography (protein A/G)
Suggested Dilutions	WB: 1:2000 IHC: 1:50 IF: 1:100

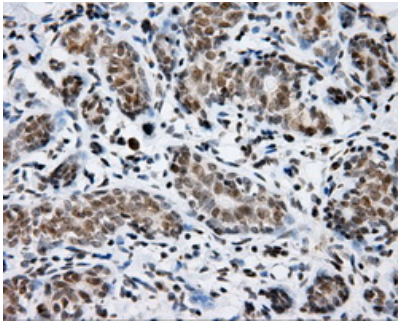
Anti-SHC (SHC1) Mouse Monoclonal Antibody [Clone ID: OTI3A1] (M00796) Images



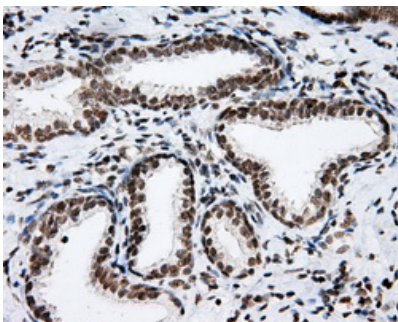
Anti-SHC1 mouse monoclonal antibody (M00796) immunofluorescent staining of COS7 cells transiently transfected by pCMV6-ENTRY SHC1.



Immunohistochemical staining of paraffin-embedded prostate tissue within the normal limits using anti-SHC1 mouse monoclonal antibody. (Heat-induced epitope retrieval by 10mM citric buffer)

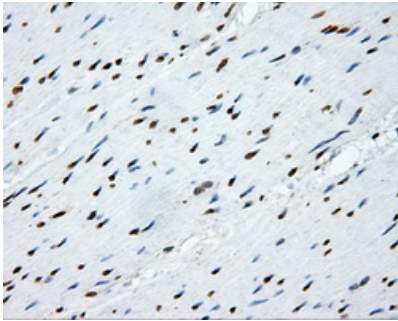
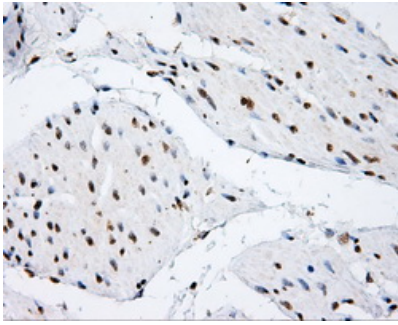


Immunohistochemical staining of paraffin-embedded breast tissue within the normal limits using anti-SHC1 mouse monoclonal antibody. (Heat-induced epitope retrieval by 10mM citric buffer)

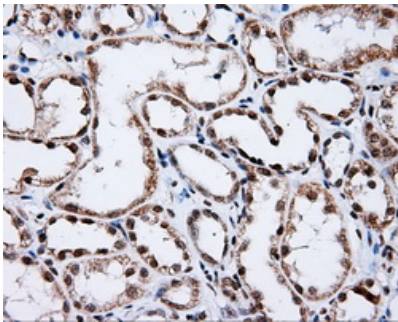


Immunohistochemical staining of paraffin-embedded Carcinoma of prostate tissue using anti-SHC1 mouse monoclonal antibody. (Heat-induced epitope retrieval by 10mM citric buffer)

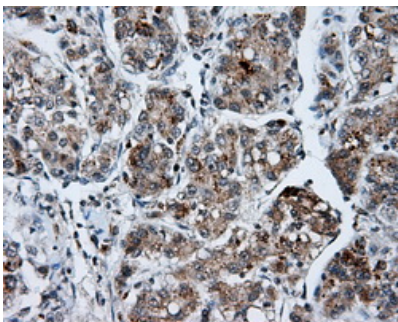
Immunohistochemical staining of paraffin-embedded bladder tissue within the normal limits using anti-SHC1 mouse monoclonal antibody. (Heat-induced epitope retrieval by 10mM citric buffer)



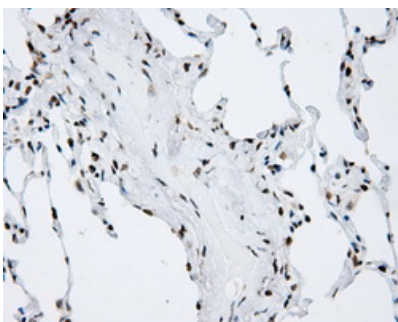
Immunohistochemical staining of paraffin-embedded colon tissue within the normal limits using anti-SHC1 mouse monoclonal antibody. (Heat-induced epitope retrieval by 10mM citric buffer)



Immunohistochemical staining of paraffin-embedded Kidney tissue within the normal limits using anti-SHC1 mouse monoclonal antibody. (Heat-induced epitope retrieval by 10mM citric buffer)



Immunohistochemical staining of paraffin-embedded Carcinoma of liver tissue using anti-SHC1 mouse monoclonal antibody. (Heat-induced epitope retrieval by 10mM citric buffer)



Immunohistochemical staining of paraffin-embedded lung tissue within the normal limits using anti-SHC1 mouse monoclonal antibody. (Heat-induced epitope retrieval by 10mM citric buffer)

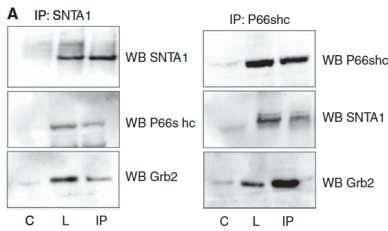
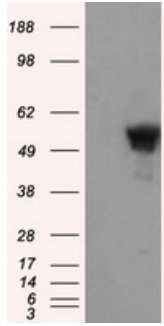


Figure from citation: Immunoprecipitation of SHC1 (p66shc) protein level by using anti-SHC1 antibody in human HBL-100/MCF-7 cell lysates.



HEK293T cells were transfected with the pCMV6-ENTRY control (Left lane) or pCMV6-ENTRY SHC1 (Right lane) cDNA for 48 hrs and lysed. Equivalent amounts of cell lysates (5 ug per lane) were separated by SDS-PAGE and immunoblotted with anti-SHC1.

Submit a product review to Biocompare.com

Submit a review of this product to Biocompare.com to receive a \$20 Amazon.com giftcard! Your reviews help your fellow scientists make the right decisions. Thank you for your contribution.



Anti-SHC (SHC1) Mouse Monoclonal Antibody [Clone ID: OTI3A1]

For Research Use Only. Not for use in diagnostic procedures.