

## Anti-SHC (SHC1) Mouse Monoclonal Antibody [Clone ID: OTI1D3]

Catalog Number: M00796-2

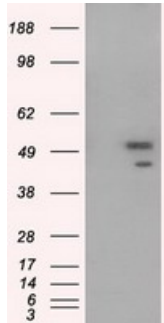
### Overview

Product Name	Anti-SHC (SHC1) Mouse Monoclonal Antibody [Clone ID: OTI1D3]
Reactive Species	Human, Mouse, Rat
Description	Boster Bio Anti-SHC1 (SHC) mouse monoclonal antibody, clone OTI1D3 (formerly 1D3). Catalog# M00796-2. Tested in FC, IF, WB. This antibody reacts with Human, Mouse, Rat.
Application	Flow Cytometry, IF, WB
Clonality	Monoclonal OTI1D3
Formulation	PBS (pH 7.3) containing 1% stabilizing protein, 50% glycerol and 0.02% sodium azide. This antibody is supplied in a stabilized formulation. Compatibility with conjugation reactions depends on the chemistry of the conjugation method used. For conjugation methods that are not compatible with the stabilizing components present in this formulation, a carrier-free antibody format is required.
Storage Instructions	Store at -20°C as received.
Host	Mouse
Uniprot ID	P29353

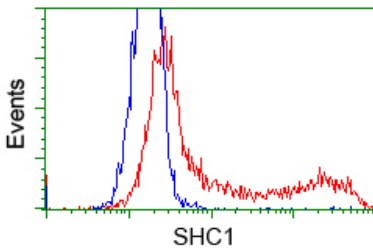
### Technical Details

Immunogen	Full length human recombinant protein of human SHC1 (NP_003020) produced in HEK293T cell.
Isotype	IgG1
Concentration	0.93 mg/ml
Purification	Purified from mouse ascites fluids or tissue culture supernatant by affinity chromatography (protein A/G)
Suggested Dilutions	WB 1:2000 IF 1:100 Flow Cytometry 1:100

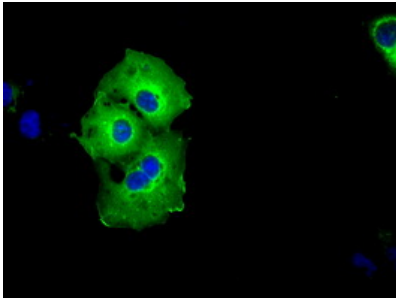
## Anti-SHC (SHC1) Mouse Monoclonal Antibody [Clone ID: OTI1D3] (M00796-2) Images



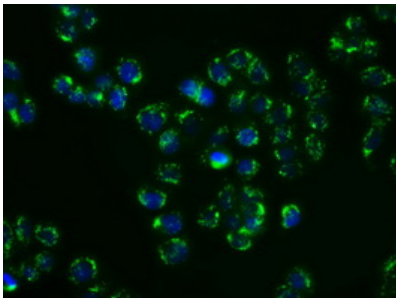
HEK293T cells were transfected with the pCMV6-ENTRY control (Left lane) or pCMV6-ENTRY SHC1 (Right lane) cDNA for 48 hrs and lysed. Equivalent amounts of cell lysates (5 ug per lane) were separated by SDS-PAGE and immunoblotted with anti-SHC1.



HEK293T cells transfected with either pCMV6-ENTRY SHC1 (Red) or empty vector control plasmid (Blue) were immunostained with anti-SHC1 mouse monoclonal (M00796-2)



Anti-SHC1 mouse monoclonal antibody (M00796-2) immunofluorescent staining of COS7 cells transiently transfected by pCMV6-ENTRY SHC1.



Immunofluorescent staining of HT29 cells using anti-SHC1 mouse monoclonal antibody (M00796-2).

**Submit a product review to Biocompare.com**

Submit a review of this product to Biocompare.com to receive a \$20 Amazon.com giftcard! Your reviews help your fellow scientists make the right decisions. Thank you for your contribution.



Anti-SHC (SHC1) Mouse Monoclonal Antibody [Clone ID: OTI1D3]

For Research Use Only. Not for use in diagnostic procedures.