

Anti-CD163 Mouse Monoclonal Antibody [Clone ID: OTI2B12]

Catalog Number: M00812-2

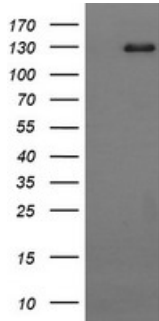
Overview

Product Name	Anti-CD163 Mouse Monoclonal Antibody [Clone ID: OTI2B12]
Reactive Species	Human
Description	Boster Bio CD163 mouse monoclonal antibody, clone OTI2B12 (formerly 2B12). Catalog# M00812-2. Tested in IF, IHC, LMNX, WB. This antibody reacts with Human.
Application	IF, IHC, WB, LMNX
Clonality	Monoclonal OTI2B12
Formulation	PBS (pH 7.3) containing 1% stabilizing protein, 50% glycerol and 0.02% sodium azide. This antibody is supplied in a stabilized formulation. Compatibility with conjugation reactions depends on the chemistry of the conjugation method used. For conjugation methods that are not compatible with the stabilizing components present in this formulation, a carrier-free antibody format is required.
Storage Instructions	Store at -20°C as received.
Host	Mouse
Uniprot ID	Q86VB7

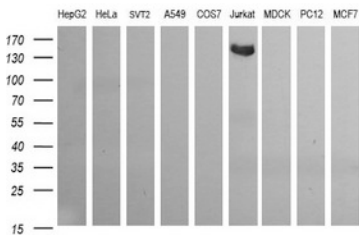
Technical Details

Immunogen	Full length human recombinant protein of human CD163 (NP_004235) produced in HEK293T cell.
Isotype	IgG2a
Concentration	1 mg/ml
Purification	Purified from mouse ascites fluids or tissue culture supernatant by affinity chromatography (protein A/G)
Suggested Dilutions	WB 1:200~4000 IHC 1:150 IF 1:100

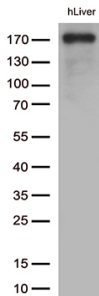
Anti-CD163 Mouse Monoclonal Antibody [Clone ID: OTI2B12] (M00812-2) Images



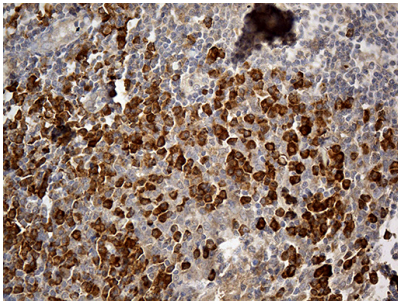
HEK293T cells were transfected with the pCMV6-ENTRY control (Left lane) or pCMV6-ENTRY CD163 (Right lane) cDNA for 48 hrs and lysed. Equivalent amounts of cell lysates (5 ug per lane) were separated by SDS-PAGE and immunoblotted with anti-CD163.



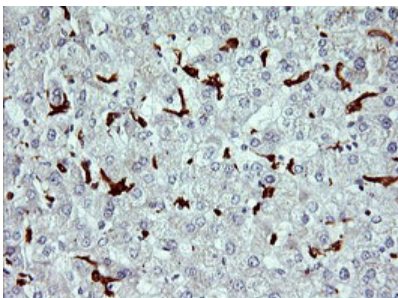
Western blot analysis of extracts (35ug) from 9 different cell lines by using anti-CD163 monoclonal antibody (HepG2: human; HeLa: human; SVT2: mouse; A549: human; COS7: monkey; Jurkat: human; MDCK: canine; PC12: rat; MCF7: human).



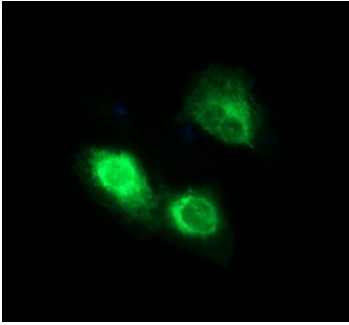
Western blot analysis of extracts (35ug) from 1 tissue lysate by using anti-CD163 monoclonal antibody (1:250).



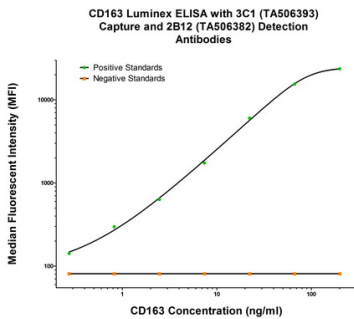
Immunohistochemical staining of paraffin-embedded Human tonsil within the normal limits using anti-CD163 mouse monoclonal antibody. (Heat-induced epitope retrieval by 1mM EDTA in 10mM Tris buffer (pH8.5) at 120°C for 3min)



Immunohistochemical staining of paraffin-embedded Human liver tissue within the normal limits using anti-CD163 mouse monoclonal antibody. (Heat-induced epitope retrieval by 10mM citric buffer)



Anti-CD163 mouse monoclonal antibody (M00812-2) immunofluorescent staining of COS7 cells transiently transfected by pCMV6-ENTRY CD163.



CD163 Luminex with 3C1 Capture and 2B12 Detection (M00812-2) Antibodies. Substrate used: full length HEK293 cells expressed recombinant protein of human CD163.

Submit a product review to Biocompare.com

Submit a review of this product to Biocompare.com to receive a \$20 Amazon.com giftcard! Your reviews help your fellow scientists make the right decisions. Thank you for your contribution.



Anti-CD163 Mouse Monoclonal Antibody [Clone ID: OT12B12]

For Research Use Only. Not for use in diagnostic procedures.