

Anti-Lactate Dehydrogenase LDHA Rabbit Monoclonal Antibody

Catalog Number: M00825

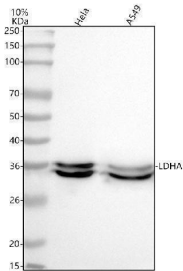
Overview

Product Name	Anti-Lactate Dehydrogenase LDHA Rabbit Monoclonal Antibody
Reactive Species	Human, Mouse, Rat
Description	Boster Bio Anti-Lactate Dehydrogenase LDHA Rabbit Monoclonal Antibody catalog # M00825. Tested in WB, IHC, ICC/IF, IP, Flow Cytometry applications. This antibody reacts with Human, Mouse, Rat.
Application	Flow Cytometry, IP, IF, IHC, ICC, WB
Clonality	Monoclonal CFE-12
Formulation	Rabbit IgG in stabilizing components, phosphate buffered saline, pH 7.4, 150mM NaCl, 0.02% sodium azide and 50% glycerol. *This antibody is supplied in a stabilized formulation. Compatibility with conjugation reactions depends on the chemistry of the conjugation method used. For conjugation methods that are not compatible with the stabilizing components present in this formulation, a carrier-free antibody format is required.
Storage Instructions	Store at -20°C for one year. For short term storage and frequent use, store at 4°C for up to one month. Avoid repeated freeze-thaw cycles.
Host	Rabbit
Uniprot ID	P00338

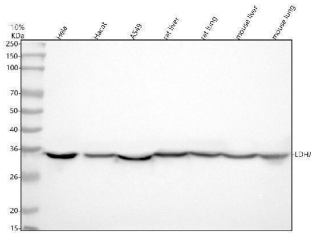
Technical Details

Immunogen	A synthesized peptide derived from human Lactate Dehydrogenase
Isotype	Rabbit IgG
Form	Liquid
Concentration	0.5mg/ml
Purification	Affinity-chromatography
Suggested Dilutions	WB 1:500-2000 IHC 1:50-200 ICC/IF 1:50-200 IP 1:20 FC 1:20

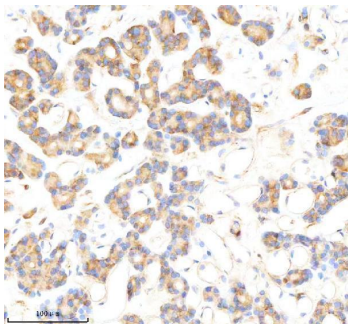
Anti-Lactate Dehydrogenase LDHA Rabbit Monoclonal Antibody (M00825) Images



Western blot analysis of LDHA using anti-LDHA antibody (M00825). Electrophoresis was performed on a 5-20% SDS-PAGE gel at 70V (Stacking gel) / 90V (Resolving gel) for 2-3 hours. The sample well of each lane was loaded with 30 ug of sample under reducing conditions. Lane 1: human HeLa whole cell lysates, Lane 2: human A549 whole cell lysates. After electrophoresis, proteins were transferred to a nitrocellulose membrane at 150 mA for 50-90 minutes. Blocked the membrane with 5% non-fat milk/TBS for 1.5 hour at RT. The membrane was incubated with rabbit anti-LDHA antigen affinity purified monoclonal antibody (Catalog # M00825) at 1:500 overnight at 4°C, then washed with TBS-0.1%Tween 3 times with 5 minutes each and probed with a goat anti-rabbit IgG-HRP secondary antibody at a dilution of 1:500 for 1.5 hour at RT. The signal is developed using an Enhanced Chemiluminescent detection (ECL) kit (Catalog # EK1002) with Tanon 5200 system. A specific band was detected for LDHA at approximately 37 kDa. The expected band size for LDHA is at 37 kDa.



Western blot analysis of LDHA using anti-LDHA antibody (M00825). Electrophoresis was performed on a 10% SDS-PAGE gel at 80V (Stacking gel) / 120V (Resolving gel) for 2 hours. The sample well of each lane was loaded with 30 ug of sample under reducing conditions. Lane 1: human HeLa whole cell lysates, Lane 2: human Hacat whole cell lysates, Lane 3: human A549 whole cell lysates, Lane 4: rat liver tissue lysates, Lane 5: rat lung tissue lysates, Lane 6: mouse liver tissue lysates, Lane 7: mouse lung tissue lysates. After electrophoresis, proteins were transferred to a nitrocellulose membrane at 150 mA for 50-90 minutes. Blocked the membrane with 5% non-fat milk/TBS for 1.5 hour at RT. The membrane was incubated with rabbit anti-LDHA antigen affinity purified monoclonal antibody (M00825) at 1:500 overnight at 4°C, then washed with TBS-0.1%Tween 3 times with 5 minutes each and probed with a goat anti-rabbit IgG-HRP secondary antibody at a dilution of 1:5000 for 1.5 hour at RT. The signal is developed using an ECL Plus Western Blotting Substrate (Catalog # AR1196-200) with Tanon 5200 system. A specific band was detected for LDHA at approximately 36 kDa. The expected band size for LDHA is at 37 kDa.



IHC analysis of LDHA using anti-LDHA antibody (M00825). LDHA was detected in a paraffin-embedded section of human thyroid cancer tissue. Heat mediated antigen retrieval was performed in EDTA buffer (pH 8.0, epitope retrieval solution). The tissue section was blocked with 10% goat serum. The tissue section was then incubated with 1:200 rabbit anti-LDHA Antibody (M00825) overnight at 4°C. Peroxidase Conjugated Goat Anti-rabbit IgG was used as secondary antibody and incubated for 30 minutes at 37°C. The tissue section was developed using HRP Conjugated

Rabbit IgG Super Vision Assay Kit (Catalog # SV0002) with DAB as the chromogen.

2 Publications Citing This Product

1. PubMed ID: -, Jiang X, Yuan J, Dou Y, Zeng D, Xiao S. Lipopolysaccharide Affects the Proliferation and Glucose Metabolism of Cervical Cancer Cells Through the FRA1/MDM2/p53 Pathway. *Int J Med Sci* 2021;18(4): 1030-1038. doi:10.7150/ijms.47360.

2. PubMed ID: 32768579, Chen J, Wu D, Dong Z, Chen A, Liu S. The expression and role of glycolysis-associated molecules in infantile hemangioma. *Life Sci*. 2020 Oct 15;259:118215. doi:10.1016/j.lfs.2020.118215. Epub 2020 Aug 5. PMID:32768579.

Visit bosterbio.com/anti-lactate-dehydrogenase-rabbit-monoclonal-antibody-m00825-boster.html to see all 2 publications.

Submit a product review to Biocompare.com

Submit a review of this product to Biocompare.com to receive a \$20 Amazon.com giftcard! Your reviews help your fellow scientists make the right decisions. Thank you for your contribution.



Anti-Lactate Dehydrogenase LDHA Rabbit Monoclonal Antibody

For Research Use Only. Not for use in diagnostic procedures.