

Anti-MX1 Mouse Monoclonal Antibody [Clone ID: OTI2G12]

Catalog Number: M00849

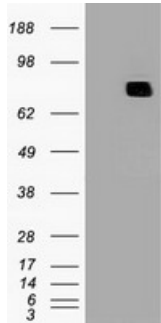
Overview

Product Name	Anti-MX1 Mouse Monoclonal Antibody [Clone ID: OTI2G12]
Reactive Species	Human, Mouse, Rat
Description	Boster Bio MX1 mouse monoclonal antibody, clone OTI2G12 (formerly 2G12). Catalog# M00849. Tested in IF, WB. This antibody reacts with Human, Mouse, Rat.
Application	IF, WB
Clonality	Monoclonal OTI2G12
Formulation	PBS (pH 7.3) containing 1% stabilizing protein, 50% glycerol and 0.02% sodium azide. This antibody is supplied in a stabilized formulation. Compatibility with conjugation reactions depends on the chemistry of the conjugation method used. For conjugation methods that are not compatible with the stabilizing components present in this formulation, a carrier-free antibody format is required.
Storage Instructions	Store at -20°C as received.
Host	Mouse
Uniprot ID	P20591

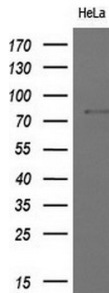
Technical Details

Immunogen	Full length human recombinant protein of human MX1 (NP_002453) produced in HEK293T cell.
Isotype	IgG1
Concentration	1 mg/ml
Purification	Purified from mouse ascites fluids or tissue culture supernatant by affinity chromatography (protein A/G)
Suggested Dilutions	WB: 1:2000 IF: 1:100

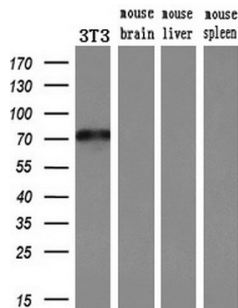
Anti-MX1 Mouse Monoclonal Antibody [Clone ID: OTI2G12] (M00849) Images



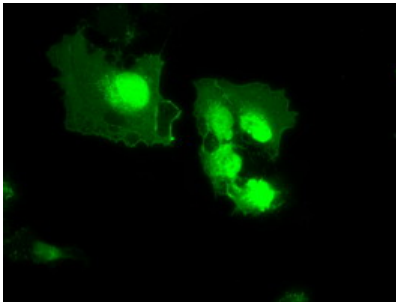
HEK293T cells were transfected with the pCMV6-ENTRY control (Left lane) or pCMV6-ENTRY MX1 (Right lane) cDNA for 48 hrs and lysed. Equivalent amounts of cell lysates (5 ug per lane) were separated by SDS-PAGE and immunoblotted with anti-MX1.



Western blot analysis of extracts (10ug) from 1 cell lines by using anti-MX1 monoclonal antibody at 1:200 dilution.



Western blot analysis of extracts (10ug) from a mouse cell line and 3 different mouse tissues by using anti-MX1 monoclonal antibody (1:200).



Anti-MX1 mouse monoclonal antibody (M00849) immunofluorescent staining of COS7 cells transiently transfected by pCMV6-ENTRY MX1.

Submit a product review to [Biocompare.com](https://www.biocompare.com)

Submit a review of this product to [Biocompare.com](https://www.biocompare.com) to receive a \$20 Amazon.com giftcard! Your reviews help your fellow scientists make the right decisions. Thank you for your contribution.



Anti-MX1 Mouse Monoclonal Antibody [Clone ID: OT12G12]

For Research Use Only. Not for use in diagnostic procedures.