

Anti-Lipoamide Dehydrogenase (DLD) Mouse Monoclonal Antibody [Clone ID: OTI6D5]

Catalog Number: M00870

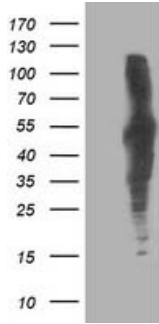
Overview

Product Name	Anti-Lipoamide Dehydrogenase (DLD) Mouse Monoclonal Antibody [Clone ID: OTI6D5]
Reactive Species	Human, Mouse, Rat
Description	Boster Bio DLD (Lipoamide Dehydrogenase) mouse monoclonal antibody, clone OTI6D5 (formerly 6D5). Catalog# M00870. Tested in FC, IF, IHC, WB. This antibody reacts with Human, Mouse, Rat.
Application	Flow Cytometry, IF, IHC, WB
Clonality	Monoclonal OTI6D5
Formulation	PBS (pH 7.3) containing 1% stabilizing protein, 50% glycerol and 0.02% sodium azide. This antibody is supplied in a stabilized formulation. Compatibility with conjugation reactions depends on the chemistry of the conjugation method used. For conjugation methods that are not compatible with the stabilizing components present in this formulation, a carrier-free antibody format is required.
Storage Instructions	Store at -20°C as received.
Host	Mouse
Uniprot ID	P09622

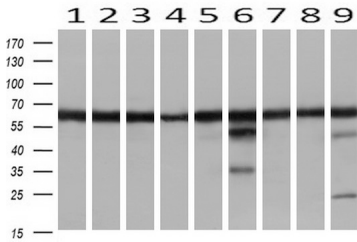
Technical Details

Immunogen	Full length human recombinant protein of human DLD (NP_000099) produced in HEK293T cell.
Isotype	IgG1
Concentration	0.82 mg/ml
Purification	Purified from mouse ascites fluids or tissue culture supernatant by affinity chromatography (protein A/G)
Suggested Dilutions	WB: 1:2000 IHC: 1:150 IF: 1:100 Flow cytometry: 1:100

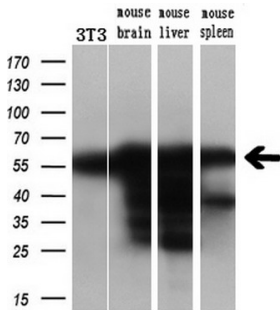
Anti-Lipoamide Dehydrogenase (DLD) Mouse Monoclonal Antibody [Clone ID: OTI6D5] (M00870) Images



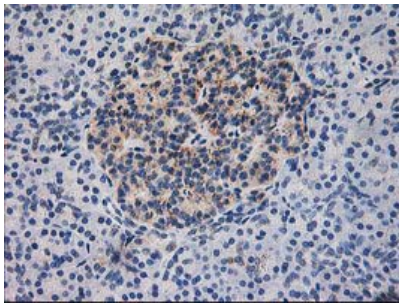
HEK293T cells were transfected with the pCMV6-ENTRY control (Left lane) or pCMV6-ENTRY DLD (Right lane) cDNA for 48 hrs and lysed. Equivalent amounts of cell lysates (5 ug per lane) were separated by SDS-PAGE and immunoblotted with anti-DLD.



Western blot analysis of extracts (10ug) from 9 Human tissue by using anti-DLD monoclonal antibody at 1:1000 (1: Testis; 2: Omentum; 3: Uterus; 4: Breast; 5: Brain; 6: Liver; 7: Ovary; 8: Thyroid gland; 9: colon).

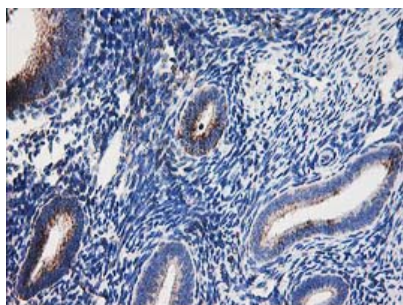


Western blot analysis of extracts (10ug) from a mouse cell line and 3 different mouse tissues by using anti-DLD monoclonal antibody (1:200).

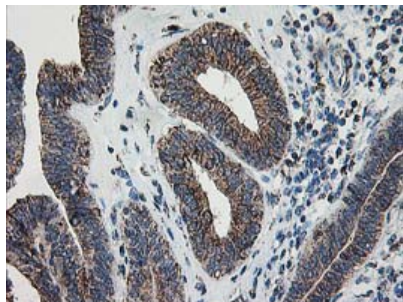


Immunohistochemical staining of paraffin-embedded Human pancreas tissue within the normal limits using anti-DLD mouse monoclonal antibody. (Heat-induced epitope retrieval by 10mM citric buffer)

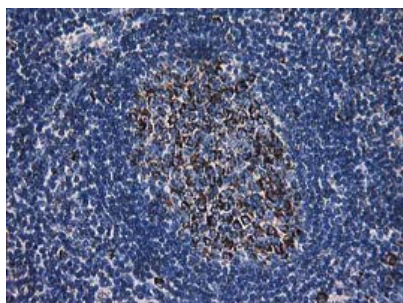
Immunohistochemical staining of paraffin-embedded Human endometrium tissue within the normal limits using anti-DLD mouse monoclonal antibody. (Heat-induced epitope retrieval by 10mM citric buffer)



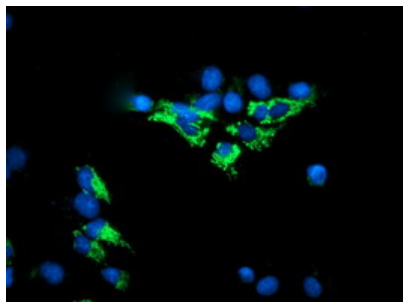
Immunohistochemical staining of paraffin-embedded Adenocarcinoma of Human endometrium tissue using anti-DLD mouse monoclonal antibody. (Heat-induced epitope retrieval by 10mM citric buffer)



Immunohistochemical staining of paraffin-embedded Human lymph node tissue within the normal limits using anti-DLD mouse monoclonal antibody. (Heat-induced epitope retrieval by 10mM citric buffer)



HEK293T cells transfected with either DLD (Myc-DDK-tagged) overexpress plasmid (Red) or empty vector control plasmid (Blue) were immunostained by anti-DLD antibody (M00870)



Anti-DLD mouse monoclonal antibody (M00870) immunofluorescent staining of COS7 cells transiently transfected by pCMV6-ENTRY DLD.

Submit a product review to [Biocompare.com](https://www.biocompare.com)

Submit a review of this product to [Biocompare.com](https://www.biocompare.com) to receive a \$20 Amazon.com giftcard! Your



reviews help your fellow scientists make the right decisions. Thank you for your contribution.

Anti-Lipoamide Dehydrogenase (DLD) Mouse Monoclonal Antibody [Clone ID: OTI6D5]

For Research Use Only. Not for use in diagnostic procedures.