

## Anti-CALR Antibody (Center)

Catalog Number: M00894-1

### About CALR

Calcium-binding chaperone that promotes folding, oligomeric assembly and quality control in the endoplasmic reticulum (ER) via the calreticulin/calnexin cycle. This lectin interacts transiently with almost all of the monoglucosylated glycoproteins that are synthesized in the ER. Interacts with the DNA-binding domain of NR3C1 and mediates its nuclear export. Involved in maternal gene expression regulation. May participate in oocyte maturation via the regulation of calcium homeostasis (By similarity).

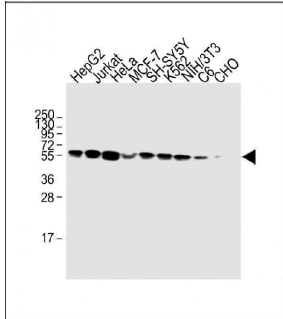
### Overview

|                      |  |
|----------------------|--|
| Product Name         | Anti-CALR Antibody (Center)  |
| Reactive Species     | Human, Mouse, Rat  |
| Description          | Boster Bio Anti-CALR Antibody (Center) (Catalog # M00894-1). Tested in WB application(s). This antibody reacts with Human, Mouse, Rat.   |
| Application          | WB   |
| Clonality            | Monoclonal 2143CT58.2.1  |
| Formulation          | Purified monoclonal antibody supplied in PBS with 0.09% (W/V) sodium azide.  |
| Storage Instructions | Maintain refrigerated at 2-8°C for up to 2 weeks. For long-term storage, store at -20°C in small aliquots to prevent freeze-thaw cycles. |
| Host                 | Mouse  |
| Uniprot ID           | P27797   |

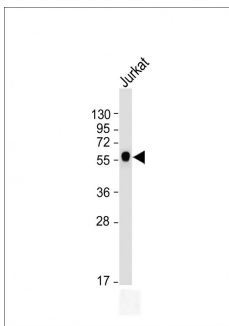
### Technical Details

|                            |  |
|----------------------------|--|
| Immunogen                  | This CALR antibody is generated from a mouse immunized with a recombinant protein from human CALR. |
| Predicted Reactive Species | Human  |
| Isotype                    | IgG1,kappa   |
| Purification               | This antibody is purified through a protein G column, followed by dialysis against PBS.            |
| Suggested Dilutions        | WB: 1:500  |

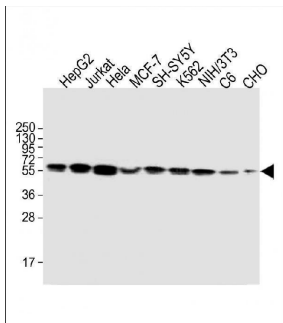
## Anti-CALR Antibody (Center) (M00894-1) Images



All lanes : Anti-CALR Antibody (Center) at 1:2000 dilution  
Lane 1: HepG2 whole cell lysate  
Lane 2: Jurkat whole cell lysate  
Lane 3: HeLa whole cell lysate  
Lane 4: MCF-7 whole cell lysate  
Lane 5: SH-SY5Y whole cell lysate  
Lane 6: K562 whole cell lysate  
Lane 7: NIH/3T3 whole cell lysate  
Lane 8: C6 whole cell lysate  
Lane 9: CHO whole cell lysate  
Lysates/proteins at 20 µg per lane. Secondary Goat Anti-Rabbit IgG, (H+L), Peroxidase conjugated at 1/10000 dilution. Predicted band size : 55 kDa  
Blocking/Dilution buffer: 5% NFDm/TBST.



Anti-CALR Antibody (Center) at dilution + Jurkat whole cell lysate  
Lysates/proteins at 20 µg per lane. Secondary Goat Anti-mouse IgG, (H+L), Peroxidase conjugated at 1/10000 dilution. Predicted band size : 48 kDa  
Blocking/Dilution buffer: 5% NFDm/TBST.



All lanes : Anti-CALR Antibody (Center) at dilution  
Lane 1: HepG2 whole cell lysate  
Lane 2: Jurkat whole cell lysate  
Lane 3: HeLa whole cell lysate  
Lane 4: MCF-7 whole cell lysate  
Lane 5: SH-SY5Y whole cell lysate  
Lane 6: K562 whole cell lysate  
Lane 7: NIH/3T3 whole cell lysate  
Lane 8: C6 whole cell lysate  
Lane 9: CHO whole cell lysate  
Lysates/proteins at 20 µg per lane. Secondary Goat Anti-mouse IgG, (H+L), Peroxidase conjugated at 1/10000 dilution. Predicted band size : 48 kDa  
Blocking/Dilution buffer: 5% NFDm/TBST.

### Submit a product review to Biocompare.com

Submit a review of this product to Biocompare.com to receive a \$20 Amazon.com giftcard! Your reviews help your fellow scientists make the right decisions. Thank you for your contribution.



Anti-CALR Antibody (Center)

For Research Use Only. Not for use in diagnostic procedures.