

Anti-CSF2 / GM-CSF Reference Antibody (lenzilumab)

Catalog Number: M00911-2

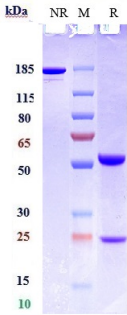
Overview

| | |
|----------------------|--|
| Product Name | Anti-CSF2 / GM-CSF Reference Antibody (lenzilumab) |
| Reactive Species | Human |
| Description | Boster Bio Anti-CSF2 / GM-CSF Reference Antibody (lenzilumab) (Catalog # M00911-2). Tested in Flow Cytometry, ELISA, FTA. This antibody reacts with Human. Endotoxin: < 0.479EU/ug,determined by LAL method. Expression system: CHO Cell |
| Application | ELISA, Flow Cytometry, Functional Assay, Kinetics |
| Clonality | Monoclonal |
| Formulation | Purified monoclonal antibody supplied in PBS, pH6.0, without preservative.This antibody is purified through a protein A column. |
| Storage Instructions | Maintain refrigerated at 2-8°C for up to 2 weeks. For long-term storage, aliquot and store at -20°C to avoid repeated freeze-thaw cycles. |
| Uniprot ID | P04141 |

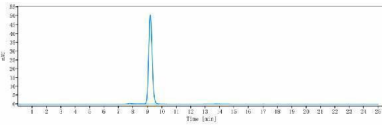
Technical Details

| | |
|---------|--------|
| Isotype | IgG1 |
| Form | Liquid |

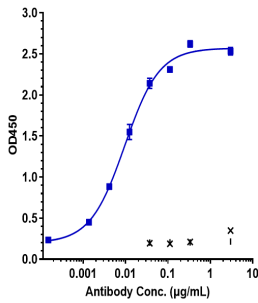
Anti-CSF2 / GM-CSF Reference Antibody (lenzilumab) (M00911-2) Images



Anti-CSF2/GM-CSF Reference Antibody (lenzilumab) on SDS-PAGE under reducing (R) condition. The gel was stained with Coomassie Blue. The purity of the protein is greater than 90%



The purity of Anti-CSF2/GM-CSF Reference Antibody (lenzilumab) is more than 95%



Immobilized human GM-CSF Nhis at 2 µg/mL can bind Anti-CSF2/GM-CSF Reference Antibody (lenzilumab)

Submit a product review to [Biocompare.com](https://www.biocompare.com)

Submit a review of this product to [Biocompare.com](https://www.biocompare.com) to receive a \$20 Amazon.com giftcard! Your reviews help your fellow scientists make the right decisions. Thank you for your contribution.



Anti-CSF2 / GM-CSF Reference Antibody (lenzilumab)

For Research Use Only. Not for use in diagnostic procedures.