

## Anti-CSF2 / GM-CSF Reference Antibody (otilimab)

Catalog Number: M00911-5

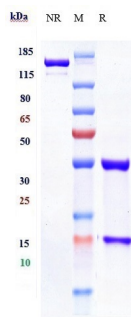
### Overview

Product Name	Anti-CSF2 / GM-CSF Reference Antibody (otilimab)
Reactive Species	Cynomolgus monkey, Human, Mouse
Description	Boster Bio Anti-CSF2 / GM-CSF Reference Antibody (otilimab) (Catalog # M00911-5). Tested in Flow Cytometry, ELISA, FTA. This antibody reacts with Cynomolgus monkey, Human, Mouse. Endotoxin: < 0.482EU/ug,determined by LAL method. Expression system: CHO Cell
Application	ELISA, Flow Cytometry, Functional Assay, Kinetics
Clonality	Monoclonal
Formulation	Purified monoclonal antibody supplied in PBS, pH6.0, without preservative.This antibody is purified through a protein A column.
Storage Instructions	Maintain refrigerated at 2-8°C for up to 2 weeks. For long-term storage, aliquot and store at -20°C to avoid repeated freeze-thaw cycles.
Uniprot ID	P04141

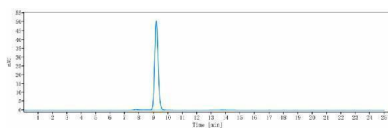
### Technical Details

Isotype	IgG1
Form	Liquid

## Anti-CSF2 / GM-CSF Reference Antibody (otilimab) (M00911-5) Images



Anti-CSF2/GM-CSF Reference Antibody (otilimab) on SDS-PAGE under reducing (R) condition. The gel was stained with Coomassie Blue. The purity of the protein is greater than 90%



The purity of Anti-CSF2/GM-CSF Reference Antibody (otilimab) is more than 95%

### Submit a product review to Biocompare.com

Submit a review of this product to Biocompare.com to receive a \$20 Amazon.com giftcard! Your reviews help your fellow scientists make the right decisions. Thank you for your contribution.



Anti-CSF2 / GM-CSF Reference Antibody (otilimab)

For Research Use Only. Not for use in diagnostic procedures.