

Anti-TYRO3 Mouse Monoclonal Antibody [Clone ID: OTI2C4]

Catalog Number: M00913-3

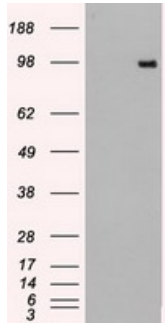
Overview

Product Name	Anti-TYRO3 Mouse Monoclonal Antibody [Clone ID: OTI2C4]
Reactive Species	Human, Mouse, Rat
Description	Boster Bio TYRO3 mouse monoclonal antibody, clone OTI2C4 (formerly 2C4). Catalog# M00913-3. Tested in IF, IHC, IP, WB. This antibody reacts with Human, Mouse, Rat.
Application	IP, IF, IHC, WB
Clonality	Monoclonal OTI2C4
Formulation	PBS (pH 7.3) containing 1% stabilizing protein, 50% glycerol and 0.02% sodium azide. This antibody is supplied in a stabilized formulation. Compatibility with conjugation reactions depends on the chemistry of the conjugation method used. For conjugation methods that are not compatible with the stabilizing components present in this formulation, a carrier-free antibody format is required.
Storage Instructions	Store at -20°C as received.
Host	Mouse
Uniprot ID	Q06418

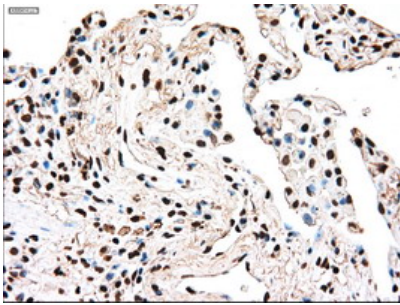
Technical Details

Immunogen	Full length human recombinant protein of human TYRO3 (NP_006284) produced in HEK293T cell.
Isotype	IgG2b
Concentration	1.3 mg/ml
Purification	Purified from mouse ascites fluids or tissue culture supernatant by affinity chromatography (protein A/G)
Suggested Dilutions	WB 1:500 IHC 1:150 IF 1:100 IP 2ug/500ul

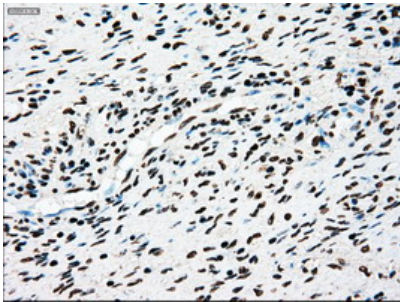
Anti-TYRO3 Mouse Monoclonal Antibody [Clone ID: OTI2C4] (M00913-3) Images



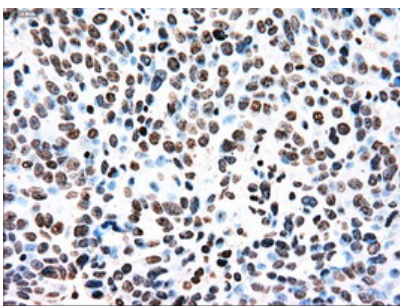
HEK293T cells were transfected with the pCMV6-ENTRY control (Left lane) or pCMV6-ENTRY TYRO3 (Right lane) cDNA for 48 hrs and lysed. Equivalent amounts of cell lysates (5 ug per lane) were separated by SDS-PAGE and immunoblotted with anti-TYRO3.



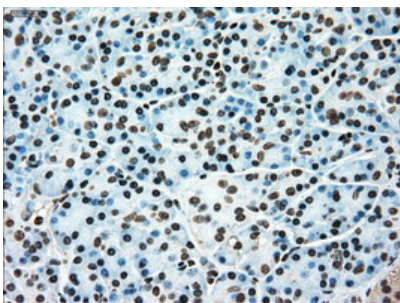
Immunohistochemical staining of paraffin-embedded Carcinoma of Human lung tissue using anti-TYRO3 mouse monoclonal antibody. (Heat-induced epitope retrieval by 10mM citric buffer)



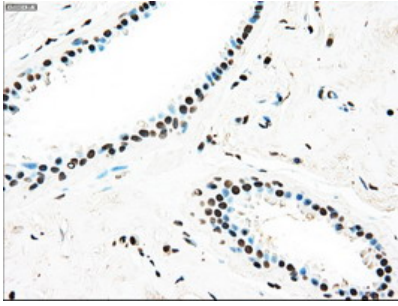
Immunohistochemical staining of paraffin-embedded Human Ovary tissue within the normal limits using anti-TYRO3 mouse monoclonal antibody. (Heat-induced epitope retrieval by 10mM citric buffer)



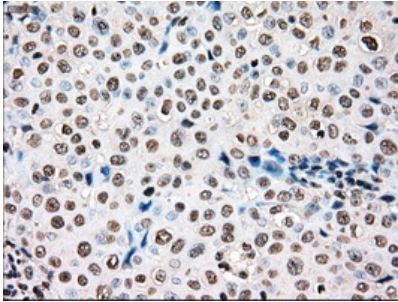
Immunohistochemical staining of paraffin-embedded Adenocarcinoma of Human ovary tissue using anti-TYRO3 mouse monoclonal antibody. (Heat-induced epitope retrieval by 10mM citric buffer)



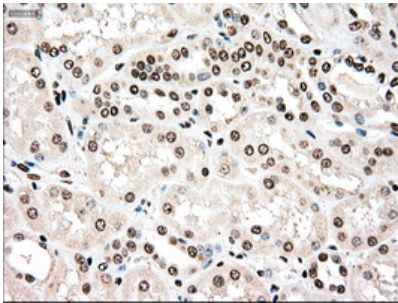
Immunohistochemical staining of paraffin-embedded Human pancreas tissue within the normal limits using anti-TYRO3 mouse monoclonal antibody. (Heat-induced epitope retrieval by 10mM citric buffer)



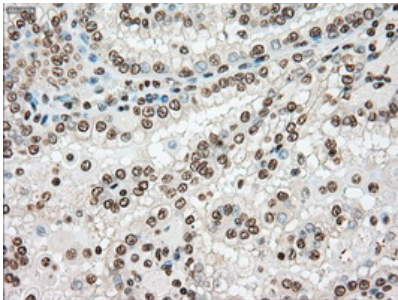
Immunohistochemical staining of paraffin-embedded Human breast tissue within the normal limits using anti-TYRO3 mouse monoclonal antibody. (Heat-induced epitope retrieval by 10mM citric buffer)



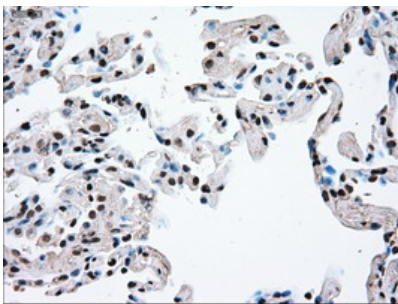
Immunohistochemical staining of paraffin-embedded Adenocarcinoma of Human breast tissue using anti-TYRO3 mouse monoclonal antibody. (Heat-induced epitope retrieval by 10mM citric buffer)



Immunohistochemical staining of paraffin-embedded Human Kidney tissue within the normal limits using anti-TYRO3 mouse monoclonal antibody. (Heat-induced epitope retrieval by 10mM citric buffer)

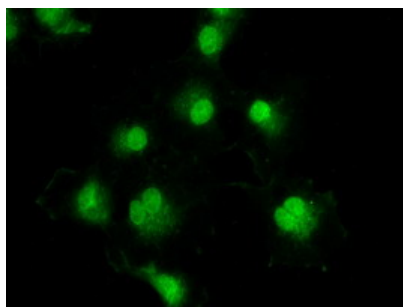


Immunohistochemical staining of paraffin-embedded Carcinoma of Human kidney tissue using anti-TYRO3 mouse monoclonal antibody. (Heat-induced epitope retrieval by 10mM citric buffer)



Immunohistochemical staining of paraffin-embedded Human lung tissue within the normal limits using anti-TYRO3 mouse monoclonal antibody. (Heat-induced epitope retrieval by 10mM citric buffer)

Anti-TYRO3 mouse monoclonal antibody (M00913-3)
immunofluorescent staining of COS7 cells transiently



transfected by pCMV6-ENTRY TYRO3.

Submit a product review to Biocompare.com

Submit a review of this product to Biocompare.com to receive a \$20 Amazon.com giftcard! Your reviews help your fellow scientists make the right decisions. Thank you for your contribution.



Anti-TYRO3 Mouse Monoclonal Antibody [Clone ID: OTI2C4]

For Research Use Only. Not for use in diagnostic procedures.