

## Anti-EGR2 Mouse Monoclonal Antibody [Clone ID: OT1B12]

Catalog Number: M00921

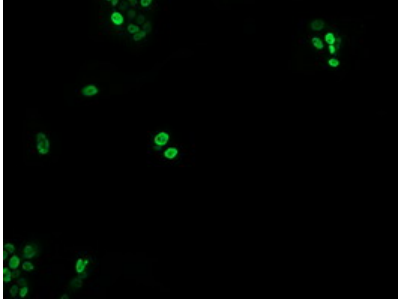
### Overview

Product Name	Anti-EGR2 Mouse Monoclonal Antibody [Clone ID: OT1B12]
Reactive Species	Human, Mouse, Rat
Description	Boster Bio EGR2 mouse monoclonal antibody, clone OT1B12 (formerly 1B12). Catalog# M00921. Tested in IF, IHC, WB. This antibody reacts with Human, Mouse, Rat.
Conjugate	Unconjugated
Application	IF, IHC, WB
Clonality	Monoclonal OT1B12
Formulation	PBS (pH 7.3) containing 1% stabilizing protein, 50% glycerol and 0.02% sodium azide. This antibody is supplied in a stabilized formulation. Compatibility with conjugation reactions depends on the chemistry of the conjugation method used. For conjugation methods that are not compatible with the stabilizing components present in this formulation, a carrier-free antibody format is required.
Storage Instructions	Store at -20°C for one year. For short term storage and frequent use, store at 4°C for up to one month. Avoid repeated freeze-thaw cycles.
Host	Mouse
Uniprot ID	P11161

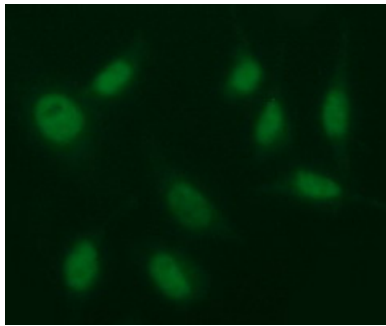
### Technical Details

Immunogen	Human recombinant protein fragment corresponding to amino acids 156-476 of human EGR2 (NP_000390) produced in E.coli.
Isotype	IgG1
Concentration	1 mg/ml
Purification	Purified from mouse ascites fluids or tissue culture supernatant by affinity chromatography (protein A/G)
Suggested Dilutions	WB: 1:500 IHC: 1:150 IF: 1:50-1:100

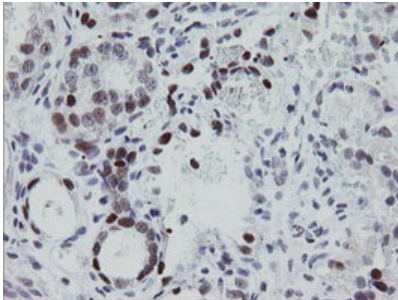
## Anti-EGR2 Mouse Monoclonal Antibody [Clone ID: OTI1B12] (M00921) Images



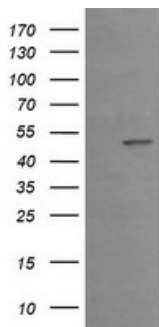
Anti-EGR2 mouse monoclonal antibody (M00921) immunofluorescent staining of COS7 cells transiently transfected by pCMV6-ENTRY EGR2.



Immunofluorescent staining of HeLa cells using anti-EGR2 mouse monoclonal antibody (M00921) at 1:100 (1:100)



Immunohistochemical staining of paraffin-embedded Adenocarcinoma of Human ovary tissue using anti-EGR2 mouse monoclonal antibody. (Heat-induced epitope retrieval by 10mM citric buffer)



HEK293T cells were transfected with the pCMV6-ENTRY control (Left lane) or pCMV6-ENTRY EGR2 (Right lane) cDNA for 48 hrs and lysed. Equivalent amounts of cell lysates (5 ug per lane) were separated by SDS-PAGE and immunoblotted with anti-EGR2.

Submit a product review to [Biocompare.com](https://www.biocompare.com)

Submit a review of this product to [Biocompare.com](https://www.biocompare.com) to receive a \$20 Amazon.com giftcard! Your reviews help your fellow scientists make the right decisions. Thank you for your contribution.



For Research Use Only. Not for use in diagnostic procedures.