

Anti-IGFBP1 Rabbit Monoclonal Antibody

Catalog Number: M00922-1

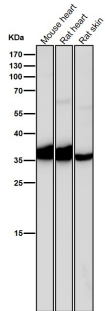
Overview

Product Name	Anti-IGFBP1 Rabbit Monoclonal Antibody
Reactive Species	Human, Mouse, Rat
Description	Boster Bio Anti-IGFBP1 Rabbit Monoclonal Antibody catalog # M00922-1. Tested in WB application. This antibody reacts with Human, Mouse, Rat.
Application	WB
Clonality	Monoclonal 22168
Formulation	Rabbit IgG in stabilizing components, phosphate buffered saline, pH 7.4, 150mM NaCl, 0.02% sodium azide and 50% glycerol. *This antibody is supplied in a stabilized formulation. Compatibility with conjugation reactions depends on the chemistry of the conjugation method used. For conjugation methods that are not compatible with the stabilizing components present in this formulation, a carrier-free antibody format is required.
Storage Instructions	Store at -20°C for one year. For short term storage and frequent use, store at 4°C for up to one month. Avoid repeated freeze-thaw cycles.
Host	Rabbit
Uniprot ID	P08833

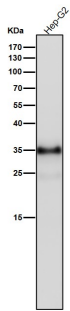
Technical Details

Immunogen	A synthesized peptide derived from human IGFBP1
Isotype	IgG
Form	Liquid
Concentration	0.5mg/ml
Purification	Affinity-chromatography
Suggested Dilutions	WB 1:500-2000

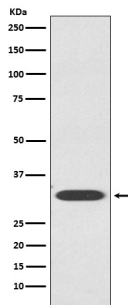
Anti-IGFBP1 Rabbit Monoclonal Antibody (M00922-1) Images



All lanes use the Antibody at 1:2K dilution for 1 hour at room temperature.



All lanes use the Antibody at 1:2K dilution for 1 hour at room temperature.



Western blot analysis of IGFBP1 expression in HepG2 cell lysate.

1 Publications Citing This Product

1. PubMed ID: 10.1038/cgt.2016.27, MicroRNA-145 functions as a tumor suppressor by targeting matrix metalloproteinase 11 and Rab GTPase family 27a in triple-negative breast cancer

Visit bosterbio.com/anti-igfbp1-rabbit-monoclonal-antibody-m00922-1-boster.html to see all 1 publications.

Submit a product review to Biocompare.com

Submit a review of this product to Biocompare.com to receive a \$20 Amazon.com giftcard! Your reviews help your fellow scientists make the right decisions. Thank you for your contribution.



Anti-IGFBP1 Rabbit Monoclonal Antibody

For Research Use Only. Not for use in diagnostic procedures.