

Anti-Glutathione Synthetase (GSS) Mouse Monoclonal Antibody [Clone ID: OTI2F2]

Catalog Number: M00928

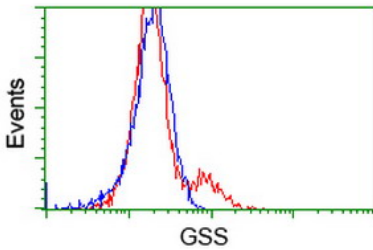
Overview

Product Name	Anti-Glutathione Synthetase (GSS) Mouse Monoclonal Antibody [Clone ID: OTI2F2]
Reactive Species	Dog, Human, Mouse, Rat
Description	Boster Bio GSS (Glutathione Synthetase) mouse monoclonal antibody, clone OTI2F2 (formerly 2F2). Catalog# M00928. Tested in FC, IF, WB. This antibody reacts with Human, Mouse, Rat, Dog.
Conjugate	Unconjugated
Application	Flow Cytometry, IF, WB
Clonality	Monoclonal OTI2F2
Formulation	PBS (pH 7.3) containing 1% stabilizing protein, 50% glycerol and 0.02% sodium azide. This antibody is supplied in a stabilized formulation. Compatibility with conjugation reactions depends on the chemistry of the conjugation method used. For conjugation methods that are not compatible with the stabilizing components present in this formulation, a carrier-free antibody format is required.
Storage Instructions	Store at -20°C for one year. For short term storage and frequent use, store at 4°C for up to one month. Avoid repeated freeze-thaw cycles.
Host	Mouse
Uniprot ID	P48637

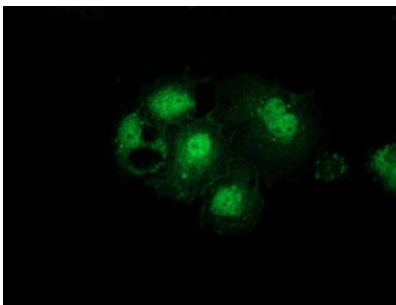
Technical Details

Immunogen	Full length human recombinant protein of human GSS (NP_000169) produced in HEK293T cell.
Isotype	IgG1
Concentration	0.7 mg/ml
Purification	Purified from mouse ascites fluids or tissue culture supernatant by affinity chromatography (protein A/G)
Suggested Dilutions	WB 1:500~2000 IF 1:100 Flow Cytometry 1:100

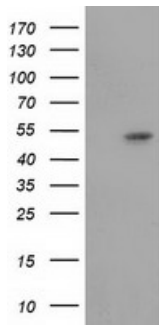
Anti-Glutathione Synthetase (GSS) Mouse Monoclonal Antibody [Clone ID: OTI2F2] (M00928) Images



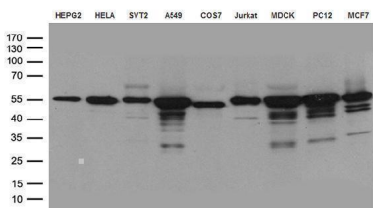
HEK293T cells transfected with either GSS (Myc-DDK-tagged) overexpress plasmid (Red) or empty vector control plasmid (Blue) were immunostained by anti-GSS antibody (M00928)



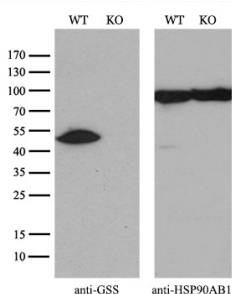
Anti-GSS mouse monoclonal antibody (M00928) immunofluorescent staining of COS7 cells transiently transfected by pCMV6-ENTRY GSS.



HEK293T cells were transfected with the pCMV6-ENTRY control (Left lane) or pCMV6-ENTRY GSS (Right lane) cDNA for 48 hrs and lysed. Equivalent amounts of cell lysates (5 ug per lane) were separated by SDS-PAGE and immunoblotted with anti-GSS.



Western blot analysis of extracts (35ug) from 9 different cell lines by using anti-GSS monoclonal antibody (HepG2: human; HeLa: human; SVT2: mouse; A549: human; COS7: monkey; Jurkat: human; MDCK: canine; PC12: rat; MCF7: human) (1:500).



Equivalent amounts of cell lysates (10 ug per lane) of wild-type 293T cells (WT) and GSS-Knockout 293T cells (KO) were separated by SDS-PAGE and immunoblotted with anti-GSS monoclonal antibody M00928

Submit a product review to Biocompare.com

Submit a review of this product to Biocompare.com to receive a \$20 Amazon.com giftcard! Your reviews help your fellow scientists make the right decisions. Thank you for your contribution.



Anti-Glutathione Synthetase (GSS) Mouse Monoclonal Antibody [Clone ID: OT12F2]

For Research Use Only. Not for use in diagnostic procedures.