

Anti-Glutathione Synthetase (GSS) Mouse Monoclonal Antibody [Clone ID: OTI1B8]

Catalog Number: M00928-1

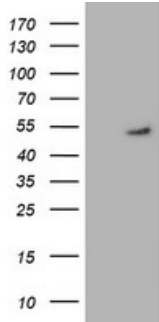
Overview

Product Name	Anti-Glutathione Synthetase (GSS) Mouse Monoclonal Antibody [Clone ID: OTI1B8]
Reactive Species	Human, Mouse, Rat
Description	Boster Bio GSS (Glutathione Synthetase) mouse monoclonal antibody, clone OTI1B8 (formerly 1B8). Catalog# M00928-1. Tested in FC, IHC, WB. This antibody reacts with Human, Mouse, Rat.
Application	Flow Cytometry, IHC, WB
Clonality	Monoclonal OTI1B8
Formulation	PBS (PH 7.3) containing 1% BSA, 50% glycerol and 0.02% sodium azide.
Storage Instructions	Store at -20°C as received.
Host	Mouse
Uniprot ID	P48637

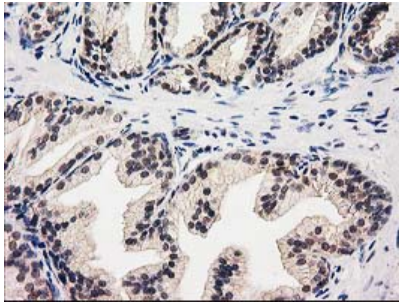
Technical Details

Immunogen	Full length human recombinant protein of human GSS (NP_000169) produced in HEK293T cell.
Isotype	IgG1
Concentration	0.51 mg/ml
Purification	Purified from mouse ascites fluids or tissue culture supernatant by affinity chromatography (protein A/G)
Suggested Dilutions	Dilute the sample so that the expected range of concentrations fall within the detection range of this kit. If the expected range of concentration is unknown, a pilot test should be conducted to decide the optimal dilution ratio for your samples. Some PubMed article(s) citing the expression level of this target are as follows:

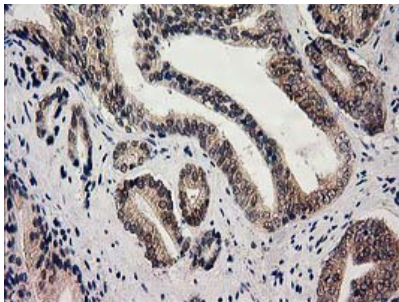
Anti-Glutathione Synthetase (GSS) Mouse Monoclonal Antibody [Clone ID: OTI1B8] (M00928-1) Images



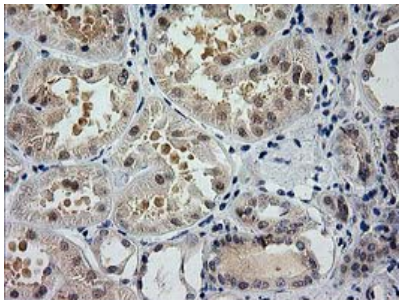
HEK293T cells were transfected with the pCMV6-ENTRY control (Left lane) or pCMV6-ENTRY GSS (Right lane) cDNA for 48 hrs and lysed. Equivalent amounts of cell lysates (5 ug per lane) were separated by SDS-PAGE and immunoblotted with anti-GSS.



Immunohistochemical staining of paraffin-embedded Human prostate tissue within the normal limits using anti-GSS mouse monoclonal antibody. (Heat-induced epitope retrieval by 10mM citric buffer)

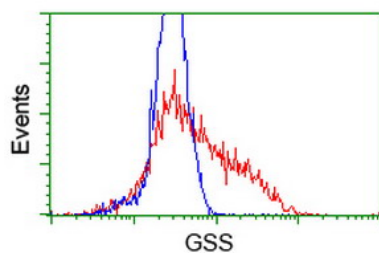


Immunohistochemical staining of paraffin-embedded Carcinoma of Human prostate tissue using anti-GSS mouse monoclonal antibody. (Heat-induced epitope retrieval by 10mM citric buffer)



Immunohistochemical staining of paraffin-embedded Human Kidney tissue within the normal limits using anti-GSS mouse monoclonal antibody. (Heat-induced epitope retrieval by 10mM citric buffer)

HEK293T cells transfected with either GSS (Myc-DDK-tagged) overexpress plasmid (Red) or empty vector control plasmid (Blue) were immunostained by anti-GSS antibody (M00928-1)



Submit a product review to Biocompare.com

Submit a review of this product to Biocompare.com to receive a \$20 Amazon.com giftcard! Your reviews help your fellow scientists make the right decisions. Thank you for your contribution.



Anti-Glutathione Synthetase (GSS) Mouse Monoclonal Antibody [Clone ID: OTI1B8]