

## Anti-TAL1 Mouse Monoclonal Antibody [Clone ID: OTI5H1]

Catalog Number: M00944-1

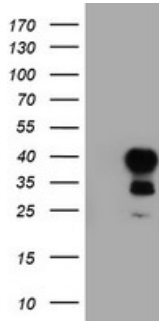
### Overview

Product Name	Anti-TAL1 Mouse Monoclonal Antibody [Clone ID: OTI5H1]
Reactive Species	Human, Mouse, Rat
Description	Boster Bio TAL1 mouse monoclonal antibody, clone OTI5H1 (formerly 5H1). Catalog# M00944-1. Tested in FC, IF, IHC, WB. This antibody reacts with Human, Mouse, Rat.
Application	Flow Cytometry, IF, IHC, WB
Clonality	Monoclonal OTI5H1
Formulation	PBS (PH 7.3) containing 1% BSA, 50% glycerol and 0.02% sodium azide.
Storage Instructions	Store at -20°C as received.
Host	Mouse
Uniprot ID	P17542

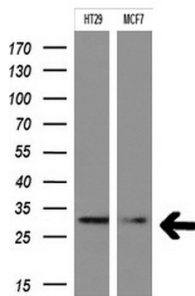
### Technical Details

Immunogen	Full length human recombinant protein of human TAL1 (NP_003180) produced in HEK293T cell.
Isotype	IgG1
Concentration	0.88 mg/ml
Purification	Purified from mouse ascites fluids or tissue culture supernatant by affinity chromatography (protein A/G)
Suggested Dilutions	<p>Dilute the sample so that the expected range of concentrations fall within the detection range of this kit.</p> <p>If the expected range of concentration is unknown, a pilot test should be conducted to decide the optimal dilution ratio for your samples.</p> <p>Some PubMed article(s) citing the expression level of this target are as follows:</p> <p>For protocols, please visit <a href="https://www.bosterbio.com/protocol-and-troubleshooting/">https://www.bosterbio.com/protocol-and-troubleshooting/</a></p>

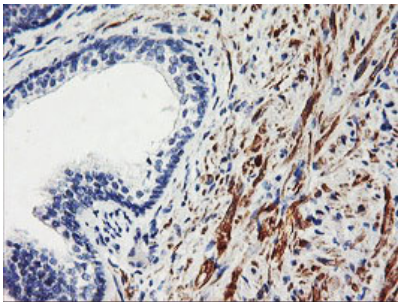
## Anti-TAL1 Mouse Monoclonal Antibody [Clone ID: OTI5H1] (M00944-1) Images



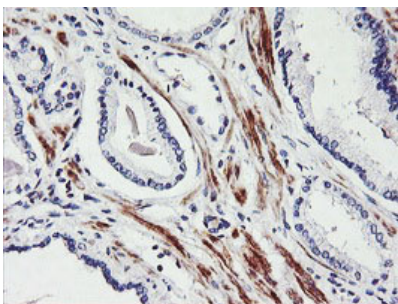
HEK293T cells were transfected with the pCMV6-ENTRY control (Left lane) or pCMV6-ENTRY TAL1 (Right lane) cDNA for 48 hrs and lysed. Equivalent amounts of cell lysates (5 ug per lane) were separated by SDS-PAGE and immunoblotted with anti-TAL1.



Western blot analysis of extracts (10ug) from 2 different cell lines by using anti-TAL1 monoclonal antibody at 1:200.

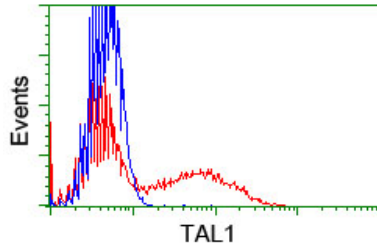
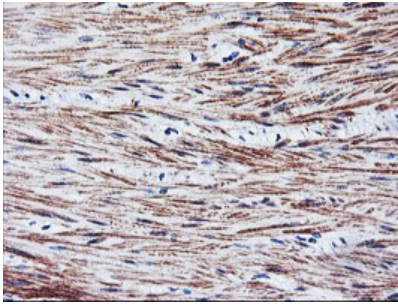


Immunohistochemical staining of paraffin-embedded Human prostate tissue within the normal limits using anti-TAL1 mouse monoclonal antibody. (Heat-induced epitope retrieval by 10mM citric buffer)

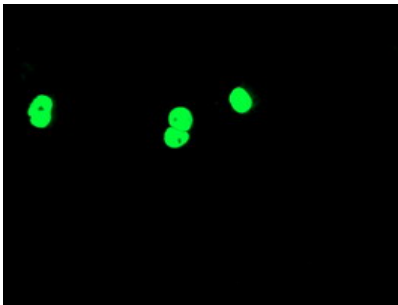


Immunohistochemical staining of paraffin-embedded Carcinoma of Human prostate tissue using anti-TAL1 mouse monoclonal antibody. (Heat-induced epitope retrieval by 10mM citric buffer)

Immunohistochemical staining of paraffin-embedded Human colon tissue within the normal limits using anti-TAL1 mouse monoclonal antibody. (Heat-induced epitope retrieval by 10mM citric buffer)



HEK293T cells transfected with either TAL1 (Myc-DDK-tagged) overexpress plasmid (Red) or empty vector control plasmid (Blue) were immunostained by anti-TAL1 antibody (M00944-1)



Anti-TAL1 mouse monoclonal antibody (M00944-1) immunofluorescent staining of COS7 cells transiently transfected by pCMV6-ENTRY TAL1.

## Submit a product review to Biocompare.com

Submit a review of this product to Biocompare.com to receive a \$20 Amazon.com giftcard! Your reviews help your fellow scientists make the right decisions. Thank you for your contribution.



Anti-TAL1 Mouse Monoclonal Antibody [Clone ID: OTI5H1]