

## Anti-M6PR IGF2R Rabbit Monoclonal Antibody

Catalog Number: M00951

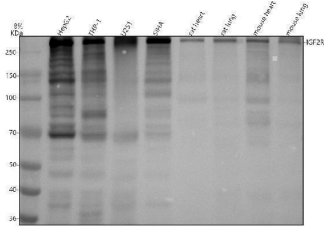
### Overview

Product Name	Anti-M6PR IGF2R Rabbit Monoclonal Antibody
Reactive Species	Human, Mouse, Rat
Description	Boster Bio Anti-M6PR IGF2R Rabbit Monoclonal Antibody catalog # M00951. Tested in WB, IHC, ICC/IF, IP, Flow Cytometry applications. This antibody reacts with Human, Mouse, Rat.
Application	Flow Cytometry, IP, IF, IHC, ICC, WB
Clonality	Monoclonal DIC-9
Formulation	Rabbit IgG in stabilizing components, phosphate buffered saline, pH 7.4, 150mM NaCl, 0.02% sodium azide and 50% glycerol. *This antibody is supplied in a stabilized formulation. Compatibility with conjugation reactions depends on the chemistry of the conjugation method used. For conjugation methods that are not compatible with the stabilizing components present in this formulation, a carrier-free antibody format is required.
Storage Instructions	Store at -20°C for one year. For short term storage and frequent use, store at 4°C for up to one month. Avoid repeated freeze-thaw cycles.
Host	Rabbit
Uniprot ID	P11717

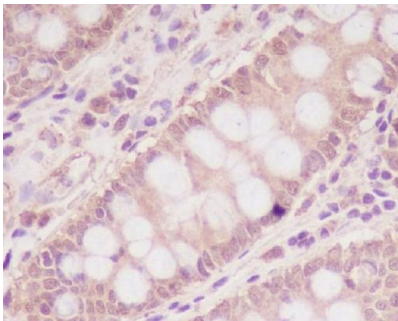
### Technical Details

Immunogen	A synthesized peptide derived from human M6PR
Isotype	Rabbit IgG
Form	Liquid
Concentration	0.5mg/ml
Purification	Affinity-chromatography
Suggested Dilutions	WB 1:1000-5000 IHC 1:50-200 ICC/IF 1:50-200 IP 1:30 FC 1:100

## Anti-M6PR IGF2R Rabbit Monoclonal Antibody (M00951) Images



Western blot analysis of IGF2R using anti-IGF2R antibody (M00951). Electrophoresis was performed on a 8% SDS-PAGE gel at 80V (Stacking gel) / 120V (Resolving gel) for 2 hours. The sample well of each lane was loaded with 30 ug of sample under reducing conditions. Lane 1: human HepG2 whole cell lysates, Lane 2: human THP-1 whole cell lysates, Lane 3: human U251 whole cell lysates, Lane 4: human SiHa whole cell lysates, Lane 5: rat heart tissue lysates, Lane 6: rat lung tissue lysates, Lane 7: mouse heart tissue lysates, Lane 8: mouse lung tissue lysates. After electrophoresis, proteins were transferred to a nitrocellulose membrane at 150 mA for 50-90 minutes. Blocked the membrane with 5% non-fat milk/TBS for 1.5 hour at RT. The membrane was incubated with rabbit anti-IGF2R antigen affinity purified monoclonal antibody (M00951) at 1:1000 overnight at 4°C, then washed with TBS-0.1% Tween 3 times with 5 minutes each and probed with a goat anti-rabbit IgG-HRP secondary antibody at a dilution of 1:5000 for 1.5 hour at RT. The signal is developed using an ECL Plus Western Blotting Substrate (Catalog # AR1196-200) with Tanon 5200 system. A specific band was detected for IGF2R at approximately 300 kDa. The expected band size for IGF2R is at 274 kDa.



Immunohistochemical analysis of paraffin-embedded human colon, using M6PR/IGF2R Antibody.

## 2 Publications Citing This Product

1. PubMed ID: -, Yang,S.,Zhao,N.,Sun,B.,Yang,Y.,Hu,Y. and Zhao,R.(2020), Grandmaternal betaine supplementation enhances hepatic IGF2 expression in F2 rat offspring through modification of promoter DNA methylation.J.Sci.Food Agric.,100: 1486-1494.<https://doi.org/10.1002/j>
2. PubMed ID: 22720981, Insulin-like growth factors in endometrioid adenocarcinoma: Correlation with clinico-pathological features and estrogen receptor expression

Visit [bosterbio.com/anti-m6pr-rabbit-monoclonal-antibody-m00951-boster.html](https://www.bosterbio.com/anti-m6pr-rabbit-monoclonal-antibody-m00951-boster.html) to see all 2 publications.

## Submit a product review to Biocompare.com

Submit a review of this product to Biocompare.com to receive a \$20 Amazon.com giftcard! Your reviews help your fellow scientists make the right decisions. Thank you for your contribution.



Anti-M6PR IGF2R Rabbit Monoclonal Antibody

For Research Use Only. Not for use in diagnostic procedures.