

## Anti-4E-BP1 Rabbit Monoclonal Antibody

Catalog Number: M00968-1

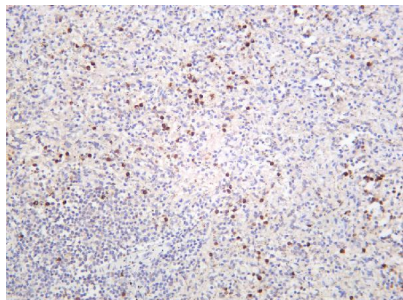
### Overview

|                      |  |
|----------------------|--|
| Product Name         | Anti-4E-BP1 Rabbit Monoclonal Antibody   |
| Reactive Species     | Human, Mouse, Rat  |
| Description          | This Recombinant Rabbit Monoclonal Antibody detects endogenous levels of 4E-BP1 protein. Validated for research with WB,IHC,IF,IP,ELISA applications. Anti 4E-BP1 is reactive for Human, Mouse, Rat samples  |
| Application          | ELISA, IP, IF, IHC, WB   |
| Clonality            | Monoclonal   |
| Formulation          | PBS, 50% glycerol, 0.05% Proclin 300, 0.05% stabilizing protein<br>This antibody is supplied in a stabilized formulation.<br>Compatibility with conjugation reactions depends on the chemistry of the conjugation method used.<br>For conjugation methods that are not compatible with the stabilizing components present in this formulation, a carrier-free antibody format is required. |
| Storage Instructions | Store at -20°C/1 year  |
| Host                 | Rabbit   |
| Uniprot ID           | Q13541   |

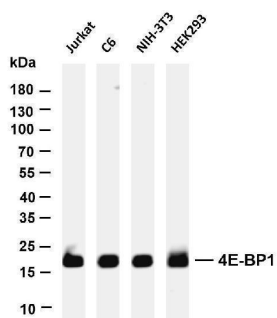
### Technical Details

|                     |   |
|---------------------|---|
| Isotype             | IgG, Kappa  |
| Purification        | Protein A   |
| Suggested Dilutions | IHC 1:200-1:1000<br>WB 1:2000-1:10000<br>IF 1:200-1:1000<br>ELISA 1:5000-1:20000<br>IP 1:50-1:200 |

## Anti-4E-BP1 Rabbit Monoclonal Antibody (M00968-1) Images



Human spleen was stained with anti-4E-BP1 rabbit antibody



Various whole cell lysates were separated by 4-20% SDS-PAGE, and the membrane was blotted with anti-4E-BP1 antibody. The HRP-conjugated Goat anti-Rabbit IgG(H + L) antibody was used to detect the antibody. Lane 1: Jurkat Lane 2: C6 Lane 3: NIH-3T3 Lane 4: HEK293 Predicted band size: 13kDa Observed band size: 17kDa

### Submit a product review to Biocompare.com

Submit a review of this product to Biocompare.com to receive a \$20 Amazon.com giftcard! Your reviews help your fellow scientists make the right decisions. Thank you for your contribution.



### Anti-4E-BP1 Rabbit Monoclonal Antibody

For Research Use Only. Not for use in diagnostic procedures.