

## Anti-MRP2 ABCC2 Rabbit Monoclonal Antibody

Catalog Number: M00974

### About ABCC2

Catalyzes the first step in leukotriene biosynthesis, and thereby plays a role in inflammatory processes.

### Overview

Product Name	Anti-MRP2 ABCC2 Rabbit Monoclonal Antibody
Reactive Species	Human
Description	Boster Bio Anti-MRP2 ABCC2 Rabbit Monoclonal Antibody catalog # M00974. Tested in WB, ICC/IF, Flow Cytometry applications. This antibody reacts with Human.
Application	Flow Cytometry, IF, ICC, WB
Clonality	Monoclonal ABDD-1
Formulation	Rabbit IgG in phosphate buffered saline, pH 7.4, 150mM NaCl, 0.02% sodium azide and 50% glycerol, 0.4-0.5mg/ml BSA.
Storage Instructions	Store at -20°C for one year. For short term storage and frequent use, store at 4°C for up to one month. Avoid repeated freeze-thaw cycles.
Host	Rabbit
Uniprot ID	Q92887

### Technical Details

Immunogen	A synthesized peptide derived from human MRP2
Isotype	Rabbit IgG
Form	Liquid
Concentration	Actual concentration vary by lot. Use suggested dilution ratio to decide dilution procedure.
Purification	Affinity-chromatography
Suggested Dilutions	Dilute the sample so that the expected range of concentrations fall within the detection range of this kit. If the expected range of concentration is unknown, a pilot test should be conducted to decide the optimal dilution ratio for your samples. Some PubMed article(s) citing the expression level of this target are as follows: Boster Bio's internal QC testing used: WB 1:500-1:2000 ICC/IF 1:50-1:200 FC 1:100



## Anti-MRP2 ABCC2 Rabbit Monoclonal Antibody (M00974) Images

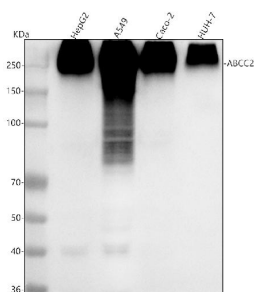


Figure 1. Western blot analysis of ABCC2 using anti-ABCC2 antibody (M00974).

Electrophoresis was performed on a 5-20% SDS-PAGE gel at 70V (Stacking gel) / 90V (Resolving gel) for 2-3 hours. The sample well of each lane was loaded with 30 ug of sample under reducing conditions.

Lane 1: human HepG2 whole cell lysates,

Lane 2: human A549 whole cell lysates,

Lane 3: human CACO-2 whole cell lysates,

Lane 4: human HUH-7 whole cell lysates.

After electrophoresis, proteins were transferred to a nitrocellulose membrane at 150 mA for 50-90 minutes.

Blocked the membrane with 5% non-fat milk/TBS for 1.5

hour at RT. The membrane was incubated with rabbit anti-

ABCC2 antigen affinity purified monoclonal antibody

(Catalog # M00974) at 1:500 overnight at 4°C, then washed

with TBS-0.1%Tween 3 times with 5 minutes each and

probed with a goat anti-rabbit IgG-HRP secondary antibody

at a dilution of 1:500 for 1.5 hour at RT. The signal is

developed using an Enhanced Chemiluminescent detection

(ECL) kit (Catalog # EK1002) with Tanon 5200 system. A

specific band was detected for ABCC2 at approximately 250

kDa. The expected band size for ABCC2 is at 174 kDa.

## 1 Publications Citing This Product

1. PubMed ID: 20628484, Association of ABCC2 and CDDP-resistance in two sublines resistant to CDDP derived from a human nasopharyngeal carcinoma cell line

Visit [bosterbio.com/anti-mrp2-rabbit-monoclonal-antibody-m00974-boster.html](http://bosterbio.com/anti-mrp2-rabbit-monoclonal-antibody-m00974-boster.html) to see all 1 publications.

## Submit a product review to Biocompare.com

Submit a review of this product to Biocompare.com to receive a \$20 Amazon.com giftcard! Your reviews help your fellow scientists make the right decisions. Thank you for your contribution.



Anti-MRP2 ABCC2 Rabbit Monoclonal Antibody