

Anti-CLPX Antibody Picoband® (monoclonal, 11C11)

Catalog Number: M00978

About CLPX

ATP-dependent Clp protease ATP-binding subunit clpX-like, mitochondrial is an enzyme that in humans is encoded by the CLPX gene. This protein is a member of the family of AAA Proteins (AAA+ ATPase) and is to form the protein complex of Clp protease. The protein encoded by this gene is part of a protease found in mitochondria. This protease is ATP-dependent and targets specific proteins for degradation. The protease consists of two heptameric rings of the CLPP catalytic subunit sandwiched between two hexameric rings of the chaperone subunit encoded by this gene. Targeted proteins are unwound by this protein and then passed on to the CLPP subunit for degradation. Two transcript variants, one protein-coding and the other non-protein coding, have been found for this gene.

Overview

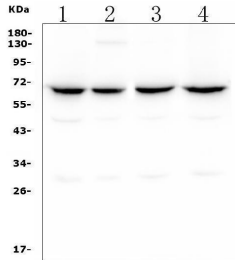
| | |
|----------------------|--|
| Product Name | Anti-CLPX Antibody Picoband® (monoclonal, 11C11) |
| Reactive Species | Human |
| Description | Boster Bio Anti-CLPX Antibody Picoband® (monoclonal, 11C11) catalog # M00978. Tested in IF, ICC, WB applications. This antibody reacts with Human. The brand Picoband indicates this is a premium antibody that guarantees superior quality, high affinity, and strong signals with minimal background in Western blot applications. Only our best-performing antibodies are designated as Picoband, ensuring unmatched performance. |
| Application | IF, ICC, WB |
| Clonality | Monoclonal 11C11 |
| Formulation | Each vial contains 4mg Trehalose, 0.9mg NaCl, 0.2mg Na ₂ HPO ₄ , 0.01mg NaN ₃ . |
| Storage Instructions | Store at -20°C for one year from date of receipt. After reconstitution, at 4°C for one month. It can also be aliquotted and stored frozen at -20°C for six months. Avoid repeated freeze-thaw cycles. |
| Host | Mouse |
| Uniprot ID | O76031 |

Technical Details

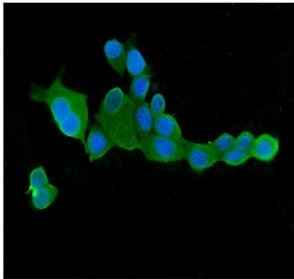
| | |
|-------------------------------|--|
| Immunogen | E. coli-derived human CLPX recombinant protein (Position: A337-E574). |
| Recommended Detection Systems | Boster recommends Enhanced Chemiluminescent Kit with anti-Mouse IgG (EK1001) for Western blot, and HRP Conjugated anti-Mouse IgG Super Vision Assay Kit (SV0001-1) for IHC(P) and ICC. |
| Cross Reactivity | No cross-reactivity with other proteins. |
| Isotype | Mouse IgG2b |
| Form | Lyophilized |

| | |
|---------------------|--|
| Concentration | 0 |
| Suggested Dilutions | Western blot, 0.1-0.5ug/ml, Human Immunocytochemistry/Immunofluorescence, 2ug/ml, Human |

Anti-CLPX Antibody Picoband® (monoclonal, 11C11) (M00978) Images



Western blot analysis of CLPX using anti ZO-1 antibody (M00978). Electrophoresis was performed on a 5-20% SDS-PAGE gel at 70V (Stacking gel) / 90V (Resolving gel) for 2-3 hours. The sample well of each lane was loaded with 50ug of sample under reducing conditions. Lane 1: human Raji tissue lysates, Lane 2: human Hela whole cell lysates, Lane 3: human HepG2 whole cell lysates, Lane 4: human Caco-2 whole cell lysates. After Electrophoresis, proteins were transferred to a Nitrocellulose membrane at 150mA for 50-90 minutes. Blocked the membrane with 5% Non-fat Milk/TBS for 1.5 hour at RT. The membrane was incubated with mouse anti-CLPX antigen affinity purified polyclonal antibody (Catalog # M00978) at 0.5 ug/mL overnight at 4°C, then washed with TBS-0.1%Tween 3 times with 5 minutes each and probed with a goat anti-mouse IgG-HRP secondary antibody at a dilution of 1:10000 for 1.5 hour at RT. The signal is developed using an Enhanced Chemiluminescent detection (ECL) kit (Catalog # EK1001) with Tanon 5200 system. A specific band was detected for CLPX at approximately 69KD. The expected band size for CLPX is at 69KD.



IF analysis of CLPX using anti-CLPX antibody (M00978). CLPX was detected in immunocytochemical section of MCF7 cells. Enzyme antigen retrieval was performed using IHC enzyme antigen retrieval reagent (AR0022) for 15 mins. The cells were blocked with 10% goat serum. And then incubated with 2ug/mL mouse anti-CLPX Antibody (M00978) overnight at 4°C. DyLight®488 Conjugated Goat Anti-Mouse IgG (BA1126) was used as secondary antibody at 1:100 dilution and incubated for 30 minutes at 37°C. The section was counterstained with DAPI. Visualize using a fluorescence microscope and filter sets appropriate for the label used.

Submit a product review to Biocompare.com

Submit a review of this product to Biocompare.com to receive a \$20 Amazon.com giftcard! Your reviews help your fellow scientists make the right decisions. Thank you for your contribution.



Anti-CLPX Antibody (monoclonal, 11C11)

For Research Use Only. Not for use in diagnostic procedures.