

## Anti-S100-beta Rabbit Monoclonal Antibody, Clone#RM304

Catalog Number: M00979-2

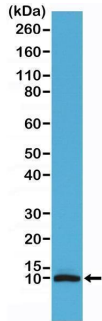
### Overview

Product Name	Anti-S100-beta Rabbit Monoclonal Antibody, Clone#RM304
Reactive Species	Human
Description	Boster Bio Anti-S100-beta Rabbit Monoclonal Antibody, Clone#RM304 (Catalog # M00979-2). Tested in IHC, WB applications. This antibody reacts with Human.
Application	IHC, WB
Clonality	Monoclonal RM304
Formulation	50% Glycerol/PBS with 1% stabilizing protein and 0.09% sodium azide This antibody is supplied in a stabilized formulation. Compatibility with conjugation reactions depends on the chemistry of the conjugation method used. For conjugation methods that are not compatible with the stabilizing components present in this formulation, a carrier-free antibody format is required.
Storage Instructions	Store at -20°C for one year. Avoid repeated freeze-thaw cycles.
Host	Rabbit
Uniprot ID	P04271

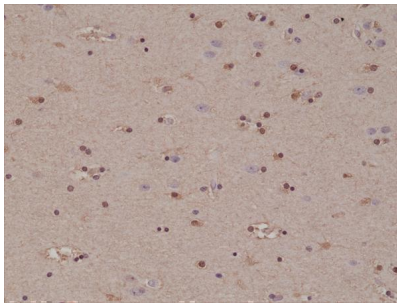
### Technical Details

Immunogen	A peptide corresponding to the C-terminus of human S100-B
Cross Reactivity	This antibody reacts to human S100-B (S-100 protein beta chain). It may also react to mouse or rat S100-B, as predicted by immunogen homology.
Isotype	Rabbit IgG
Form	Liquid
Concentration	0.5-1mg/ml, actual concentration vary by lot. Use suggested dilution ratio to decide dilution procedure.
Purification	Protein A affinity purified from an animal origin-free culture supernatant
Suggested Dilutions	Immunohistochemistry (IHC): 1:500-1:1000 dilution WB: 1:100-1:200 dilution.

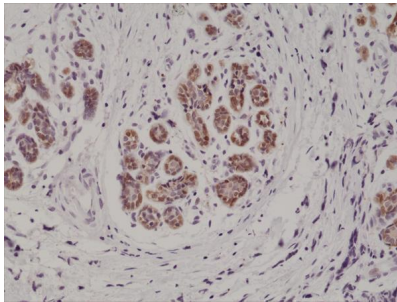
## Anti-S100-beta Rabbit Monoclonal Antibody, Clone#RM304 (M00979-2) Images



Western Blotting result Western Blot of human brain tissue lysate using anti-S100B rabbit monoclonal antibody (Clone RM304) at a 1:100 dilution.



IHC result Immunohistochemical staining of formalin fixed and paraffin embedded human brain tissue section using anti-S100B rabbit monoclonal antibody (Clone RM304) at a 1:1000 dilution.



IHC result Immunohistochemical staining of formalin fixed and paraffin embedded human breast cancer tissue section using anti-S100B rabbit monoclonal antibody (Clone RM304) at a 1:1000 dilution.

## 5 Publications Citing This Product

1. PubMed ID: 25538758, Xue B, Sun L, Li X, Wang X, Zhang Y, Mu Y, Liang L. Neural Regen Res. 2012 Oct 25;7(30):2340-6. Doi: 10.3969/J.Issn.1673-5374.2012.30.003. Ginsenoside Rb1 Relieves Glucose Fluctuation-Induced Oxidative Stress And Apoptosis In Schwann Cells.
2. PubMed ID: 25368634, Wu Y, Xue B, Li X, Liu H. Neural Regen Res. 2012 Nov 25;7(33):2583-91. Doi: 10.3969/J.Issn.1673-5374.2012.33.003. Puerarin Prevents High Glucose-Induced Apoptosis Of Schwann Cells By Inhibiting Oxidative Stress.
3. PubMed ID: 25206506, Zhao F, He W, Zhang Y, Tian D, Zhao H, Yu K, Bai J. Neural Regen Res. 2013 Jul 25;8(21):1974-84. Doi: 10.3969/J.Issn.1673-5374.2013.21.006. Electric Stimulation And Decimeter Wave Therapy Improve The Recovery Of Injured Sciatic Nerves.

Visit [bosterbio.com/anti-s100-beta-rabbit-monoclonal-antibody-clone-rm304-m00979-2-boster.html](http://bosterbio.com/anti-s100-beta-rabbit-monoclonal-antibody-clone-rm304-m00979-2-boster.html) to see all 5 publications.

Submit a product review to [Biocompare.com](http://Biocompare.com)

Submit a review of this product to [Biocompare.com](http://Biocompare.com) to receive a \$20 Amazon.com giftcard! Your



reviews help your fellow scientists make the right decisions. Thank you for your contribution.

Anti-S100-beta Rabbit Monoclonal Antibody, Clone#RM304

For Research Use Only. Not for use in diagnostic procedures.