

## Anti-MEK2 MAP2K2 Rabbit Monoclonal Antibody

Catalog Number: M00996

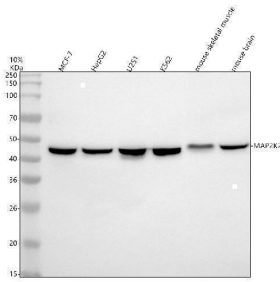
### Overview

Product Name	Anti-MEK2 MAP2K2 Rabbit Monoclonal Antibody
Reactive Species	Human, Mouse
Description	Boster Bio Anti-MEK2 MAP2K2 Rabbit Monoclonal Antibody catalog # M00996. Tested in WB, IHC, ICC/IF, IP, Flow Cytometry applications. This antibody reacts with Human, Mouse.
Application	Flow Cytometry, IP, IF, IHC, ICC, WB
Clonality	Monoclonal HBI-13
Formulation	Rabbit IgG in stabilizing components, phosphate buffered saline, pH 7.4, 150mM NaCl, 0.02% sodium azide and 50% glycerol. *This antibody is supplied in a stabilized formulation. Compatibility with conjugation reactions depends on the chemistry of the conjugation method used. For conjugation methods that are not compatible with the stabilizing components present in this formulation, a carrier-free antibody format is required.
Storage Instructions	Store at -20°C for one year. For short term storage and frequent use, store at 4°C for up to one month. Avoid repeated freeze-thaw cycles.
Host	Rabbit
Uniprot ID	P36507

### Technical Details

Immunogen	A synthesized peptide derived from human MEK2
Isotype	Rabbit IgG
Form	Liquid
Concentration	0.5mg/ml
Purification	Affinity-chromatography
Suggested Dilutions	WB 1:500-2000 IHC 1:50-200 ICC/IF 1:50-200 IP 1:20 FC 1:20

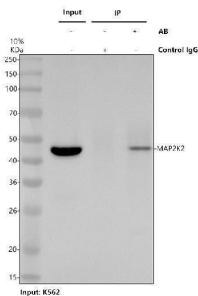
## Anti-MEK2 MAP2K2 Rabbit Monoclonal Antibody (M00996) Images



Western blot analysis of MAP2K2 using anti-MAP2K2 antibody (M00996). Electrophoresis was performed on a 10% SDS-PAGE gel at 80V (Stacking gel) / 120V (Resolving gel) for 2 hours. The sample well of each lane was loaded with 30 ug of sample under reducing conditions. Lane 1: human MCF-7 whole cell lysates, Lane 2: human HepG2 whole cell lysates, Lane 3: human U251 whole cell lysates, Lane 4: human K562 whole cell lysates, Lane 5: mouse skeletal muscle tissue lysates, Lane 6: mouse brain tissue lysates. After electrophoresis, proteins were transferred to a nitrocellulose membrane at 150 mA for 50-90 minutes. Blocked the membrane with 5% non-fat milk/TBS for 1.5 hour at RT. The membrane was incubated with rabbit anti-MAP2K2 antigen affinity purified monoclonal antibody (M00996) at 1:1000 overnight at 4°C, then washed with TBS-0.1%Tween 3 times with 5 minutes each and probed with a goat anti-rabbit IgG-HRP secondary antibody at a dilution of 1:1000 for 1.5 hour at RT. The signal is developed using an ECL Plus Western Blotting Substrate (Catalog # AR1196-200) with Tanon 5200 system. A specific band was detected for MAP2K2 at approximately 44 kDa. The expected band size for MAP2K2 is at 44 kDa.



IHC analysis of MAP2K2 using anti-MAP2K2 antibody (M00996). MAP2K2 was detected in a paraffin-embedded section of human stomach cancer tissue. Heat mediated antigen retrieval was performed in EDTA buffer (pH 8.0, epitope retrieval solution). The tissue section was blocked with 10% goat serum. The tissue section was then incubated with 1:50 rabbit anti-MAP2K2 Antibody (M00996) overnight at 4°C. Peroxidase Conjugated Goat Anti-rabbit IgG was used as secondary antibody and incubated for 30 minutes at 37°C. The tissue section was developed using HRP Conjugated Rabbit IgG Super Vision Assay Kit (Catalog # SV0002) with DAB as the chromogen.



Immunoprecipitating (IP) MAP2K2 in K562 whole cell lysate. Western blot analysis of MAP2K2 using anti-MAP2K2 antibody (M00996); Lane 1: K562 whole cell lysates (30ug); Lane 2: Rabbit control IgG instead of anti-MAP2K2 antibody in K562 whole cell lysate; Lane 3: anti-MAP2K2 antibody (2ug) + K562 whole cell lysate (500ug). After electrophoresis, proteins were transferred to a membrane. Then the membrane was incubated with rabbit anti-MAP2K2 antigen affinity purified monoclonal antibody (M00996) at a dilution of 0.5 ug/mL and probed with a goat anti-rabbit IgG-HRP secondary antibody (Light Chain). The signal is developed using ECL Plus Western Blotting Substrate (Catalog # AR1196-200). A specific band was detected for MAP2K2 at approximately 44 kDa. The expected band size for MAP2K2 is at 44 kDa.

## Submit a product review to Biocompare.com

Submit a review of this product to Biocompare.com to receive a \$20 Amazon.com giftcard! Your reviews help your fellow scientists make the right decisions. Thank you for your contribution.



Anti-MEK2 MAP2K2 Rabbit Monoclonal Antibody

For Research Use Only. Not for use in diagnostic procedures.