

Anti-MEK2/MAP2K2 Antibody Picoband™ (monoclonal, 2B4)

Catalog Number: M00996-2

About MAP2K2

Dual specificity mitogen-activated protein kinase kinase 2 (MAP2K2), also called PRKMK2 or MEK2, is an enzyme that in humans is encoded by the MAP2K2 gene. The protein encoded by this gene is a dual specificity protein kinase that belongs to the MAP kinase kinase family. MAP2K2 is mapped to 19p13.3. This kinase is known to play a critical role in mitogen growth factor signal transduction, and the inhibition or degradation of this kinase is found to be involved in the pathogenesis of Yersinia and anthrax. Recombinant MEK2 and MEK1 both could activate human ERK1 in vitro, and they further characterized biochemically the 2 MAP2Ks. MAP2K2 has been shown to interact with MAPK3 and ARAF.

Overview

Product Name	Anti-MEK2/MAP2K2 Antibody Picoband™ (monoclonal, 2B4)
Reactive Species	Human, Mouse, Rat
Description	Boster Bio Anti-MEK2/MAP2K2 Antibody Picoband™ (monoclonal, 2B4) catalog # M00996-2. Tested in Flow Cytometry, IF, ICC, WB applications. This antibody reacts with Human, Mouse, Rat.
Application	Flow Cytometry, IF, ICC, WB
Clonality	Monoclonal 2B4
Formulation	Each vial contains 4mg Trehalose, 0.9mg NaCl and 0.2mg Na ₂ HPO ₄ .
Storage Instructions	Store at -20°C for one year from date of receipt. After reconstitution, at 4°C for one month. It can also be aliquotted and stored frozen at -20°C for six months. Avoid repeated freeze-thaw cycles.
Host	Mouse
Uniprot ID	P36507

Technical Details

Immunogen	E.coli-derived human MEK2/MAP2K2 recombinant protein (Position: M1-V400).
Predicted Reactive Species	Hepatitis Virus
Recommended Detection Systems	Boster recommends Enhanced Chemiluminescent Kit with anti-Mouse IgG (EK1001) for Western blot, and HRP Conjugated anti-Mouse IgG Super Vision Assay Kit (SV0001-1) for ICC.
Cross Reactivity	No cross-reactivity with other proteins.
Isotype	Mouse IgG2b
Form	Lyophilized
Concentration	Adding 0.2 ml of distilled water will yield a concentration of 500 ug/ml.

Purification	Immunogen affinity purified.
Suggested Dilutions	<p>Dilute the sample so that the expected range of concentrations fall within the detection range of this kit.</p> <p>If the expected range of concentration is unknown, a pilot test should be conducted to decide the optimal dilution ratio for your samples.</p> <p>Some PubMed article(s) citing the expression level of this target are as follows:</p> <p>Boster Bio's internal QC testing used:</p> <p>Western blot, 0.25-0.5ug/ml, Human, Mouse, Rat</p> <p>Immunocytochemistry/Immunofluorescence, 5ug/ml, Human</p> <p>Flow Cytometry, 1-3ug/1x10⁶ cells, Human</p>

Anti-MEK2/MAP2K2 Antibody Picoband™ (monoclonal, 2B4) (M00996-2) Images

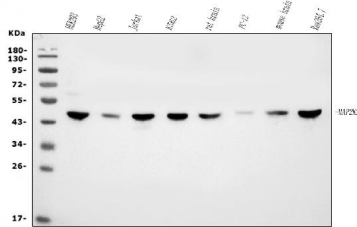


Figure 1. Western blot analysis of MEK2/MAP2K2 using anti-MEK2/MAP2K2 antibody (M00996-2).

Electrophoresis was performed on a 5-20% SDS-PAGE gel at 70V (Stacking gel) / 90V (Resolving gel) for 2-3 hours. The sample well of each lane was loaded with 30ug of sample under reducing conditions.

Lane 1: human HEK293 whole cell lysates,

Lane 2: human HepG2 whole cell lysates,

Lane 3: human Jurkat whole cell lysates,

Lane 4: human K562 whole cell lysates,

Lane 5: rat brain tissue lysates,

Lane 6: rat PC-12 whole cell lysates,

Lane 7: mouse brain tissue lysates,

Lane 8: mouse Raw264.7 whole cell lysates.

After Electrophoresis, proteins were transferred to a Nitrocellulose membrane at 150mA for 50-90 minutes.

Blocked the membrane with 5% Non-fat Milk/ TBS for 1.5 hour at RT. The membrane was incubated with mouse anti-MEK2/MAP2K2 antigen affinity purified monoclonal antibody (Catalog # M00996-2) at 0.5 ug/mL overnight at 4°C, then washed with TBS-0.1%Tween 3 times with 5 minutes each and probed with a goat anti-mouse IgG-HRP secondary antibody at a dilution of 1:10000 for 1.5 hour at RT. The signal is developed using an Enhanced Chemiluminescent detection (ECL) kit (Catalog # EK1001) with Tanon 5200 system. A specific band was detected for MEK2/MAP2K2 at approximately 45KD. The expected band size for MEK2/MAP2K2 is at 45KD.

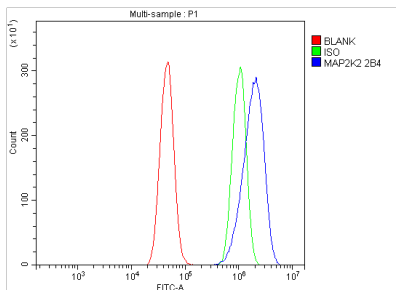


Figure 2. Flow Cytometry analysis of A431 cells using anti-MEK2/MAP2K2 antibody (M00996-2).

Overlay histogram showing A431 cells stained with M00996-2 (Blue line). The cells were blocked with 10% normal goat serum. And then incubated with mouse anti-MEK2/MAP2K2 Antibody (M00996-2, 1ug/1x10⁶ cells) for 30 min at 20°C. DyLight®488 conjugated goat anti-mouse IgG (BA1126, 5-10ug/1x10⁶ cells) was used as secondary antibody for 30 minutes at 20°C. Isotype control antibody (Green line) was mouse IgG (1ug/1x10⁶) used under the same conditions. Unlabelled sample (Red line) was also used as a control.

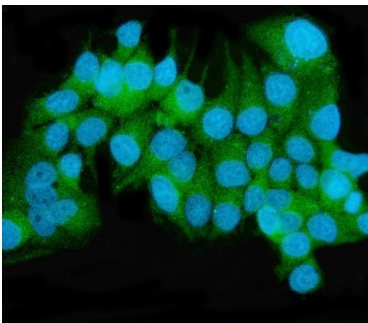


Figure 3. IF analysis of MEK2/MAP2K2 using anti-MEK2/MAP2K2 antibody (M00996-2).

MEK2/MAP2K2 was detected in immunocytochemical section of MCF-7 cells. Enzyme antigen retrieval was performed using IHC enzyme antigen retrieval reagent (AR0022) for 15 mins. The cells were blocked with 10% goat serum. And then incubated with 5ug/mL mouse anti-MEK2/MAP2K2 Antibody (M00996-2) overnight at 4°C. DyLight®488 Conjugated Goat Anti-Mouse IgG (BA1126) was used as secondary antibody at 1:100 dilution and incubated for 30 minutes at 37°C. The section was counterstained with DAPI. Visualize using a

fluorescence microscope and filter sets appropriate for the label used.

Submit a product review to Biocompare.com

Submit a review of this product to Biocompare.com to receive a \$20 Amazon.com giftcard! Your reviews help your fellow scientists make the right decisions. Thank you for your contribution.



Anti-MEK2/MAP2K2 Antibody (monoclonal, 2B4)