

## Anti-Mannan Binding Lectin (MBL2) Mouse Monoclonal Antibody [Clone ID: OTI1A12]

Catalog Number: M01000

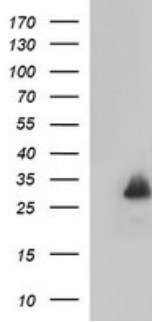
### Overview

Product Name	Anti-Mannan Binding Lectin (MBL2) Mouse Monoclonal Antibody [Clone ID: OTI1A12]
Reactive Species	Human
Description	Boster Bio MBL2 mouse monoclonal antibody, clone OTI1A12 (formerly 1A12). Catalog# M01000. Tested in IF, IHC, WB. This antibody reacts with Human.
Application	IF, IHC, WB
Clonality	Monoclonal OTI1A12
Formulation	PBS (pH 7.3) containing 1% stabilizing protein, 50% glycerol and 0.02% sodium azide. This antibody is supplied in a stabilized formulation. Compatibility with conjugation reactions depends on the chemistry of the conjugation method used. For conjugation methods that are not compatible with the stabilizing components present in this formulation, a carrier-free antibody format is required.
Storage Instructions	Store at -20°C as received.
Host	Mouse
Uniprot ID	P11226

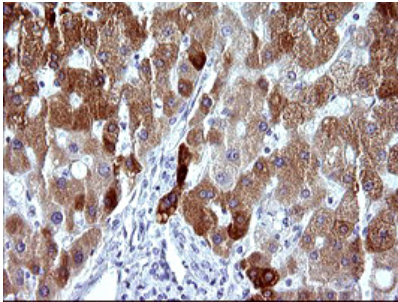
### Technical Details

Immunogen	Full length human recombinant protein of human MBL2 (NP_000233) produced in HEK293T cell.
Isotype	IgG1
Concentration	1 mg/ml
Purification	Purified from mouse ascites fluids or tissue culture supernatant by affinity chromatography (protein A/G)
Suggested Dilutions	WB: 1:4000 IHC: 1:150 IF: 1:100

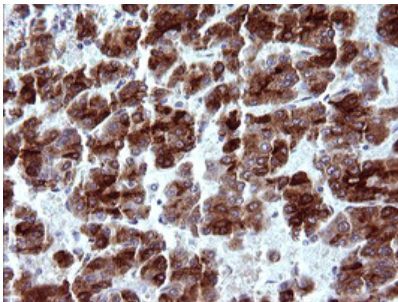
## Anti-Mannan Binding Lectin (MBL2) Mouse Monoclonal Antibody [Clone ID: OTI1A12] (M01000) Images



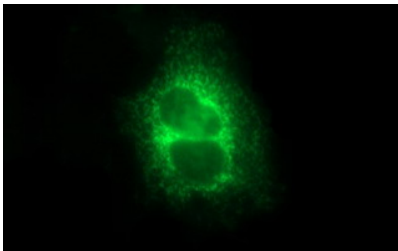
HEK293T cells were transfected with the pCMV6-ENTRY control (Left lane) or pCMV6-ENTRY MBL2 (Right lane) cDNA for 48 hrs and lysed. Equivalent amounts of cell lysates (5 ug per lane) were separated by SDS-PAGE and immunoblotted with anti-MBL2.



Immunohistochemical staining of paraffin-embedded Human liver tissue within the normal limits using anti-MBL2 mouse monoclonal antibody (M01000) at 1:150 dilution.



Immunohistochemical staining of paraffin-embedded Carcinoma of Human liver tissue using anti-MBL2 mouse monoclonal antibody (M01000) at 1:150 dilution.



Immunofluorescent staining of COS7 cells transiently transfected by pCMV6-ENTRY MBL2 using Anti-MBL2 mouse monoclonal antibody (M01000) at 1:100 dilution.

Submit a product review to [Biocompare.com](https://www.biocompare.com)

Submit a review of this product to [Biocompare.com](https://www.biocompare.com) to receive a \$20 Amazon.com giftcard! Your reviews help your fellow scientists make the right decisions. Thank you for your contribution.



For Research Use Only. Not for use in diagnostic procedures.