

## Anti-SLC7A5 Antibody (N-Term)

Catalog Number: M01016-1

### About SLC7A5

Sodium-independent, high-affinity transport of large neutral amino acids such as phenylalanine, tyrosine, leucine, arginine and tryptophan, when associated with SLC3A2/4F2hc. Involved in cellular amino acid uptake. Acts as an amino acid exchanger. Involved in the transport of L-DOPA across the blood- brain barrier, and that of thyroid hormones triiodothyronine (T3) and thyroxine (T4) across the cell membrane in tissues such as placenta. Plays a role in neuronal cell proliferation (neurogenesis) in brain. Involved in the uptake of methylmercury (MeHg) when administered as the L- cysteine or D,L-homocysteine complexes, and hence plays a role in metal ion homeostasis and toxicity. Involved in the cellular activity of small molecular weight nitrosothiols, via the stereoselective transport of L- nitrosocysteine (L-CNSO) across the transmembrane. May play an important role in high-grade gliomas. Mediates blood-to-retina L- leucine transport across the inner blood-retinal barrier which in turn may play a key role in maintaining large neutral amino acids as well as neurotransmitters in the neural retina. Acts as the major transporter of tyrosine in fibroblasts.

### Overview

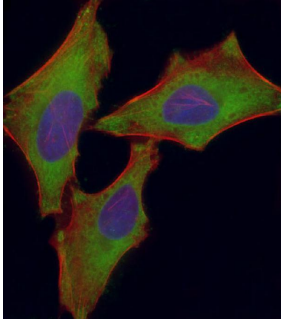
Product Name	Anti-SLC7A5 Antibody (N-Term)
Reactive Species	Human
Description	Boster Bio Anti-SLC7A5 Antibody (N-Term) (Catalog # M01016-1). Tested in WB, IF application(s). This antibody reacts with Human.
Application	IF, WB
Clonality	Polyclonal
Formulation	Purified polyclonal antibody supplied in PBS with 0.09% (W/V) sodium azide.
Storage Instructions	Maintain refrigerated at 2-8°C for up to 2 weeks. For long-term storage, store at -20°C in small aliquots to prevent freeze-thaw cycles.
Host	Rabbit
Uniprot ID	Q01650

### Technical Details

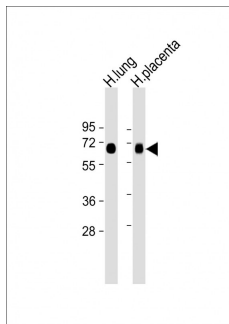
Immunogen	This SLC7A5 antibody is generated from a rabbit immunized with a KLH conjugated synthetic peptide between 15-45 amino acids from human SLC7A5.
Predicted Reactive Species	Human
Isotype	Rabbit IgG
Purification	This antibody is purified through a protein A column, followed by peptide affinity purification.
Suggested Dilutions	IF: 1:25 WB: 1:2000



## Anti-SLC7A5 Antibody (N-Term) (M01016-1) Images



Immunofluorescent analysis of 4% paraformaldehyde-fixed, 0.1% Triton X-100 permeabilized HeLa (human cervical epithelial adenocarcinoma cell line) cells labeling SLC7A5 with M01016-1 at 1/25 dilution, followed by Dylight® 488-conjugated goat anti-rabbit IgG secondary antibody at 1/200 dilution (green). Immunofluorescence image showing cytoplasm staining on HeLa cell line. Cytoplasmic actin is detected with Dylight® 554 Phalloidin at 1/100 dilution (red). The nuclear counter stain is DAPI (blue).



All lanes : Anti-SLC7A5 Antibody (N-Term) at 1:2000 dilution  
Lane 1: Human lung lysate  
Lane 2: Human placenta lysate  
Lysates/proteins at 20 µg per lane. Secondary Goat Anti-Rabbit IgG, (H+L), Peroxidase conjugated at 1/10000 dilution. Predicted band size : 55 kDa  
Blocking/Dilution buffer: 5% NFDM/TBST.

## Submit a product review to Biocompare.com

Submit a review of this product to Biocompare.com to receive a \$20 Amazon.com giftcard! Your reviews help your fellow scientists make the right decisions. Thank you for your contribution.



Anti-SLC7A5 Antibody (N-Term)

For Research Use Only. Not for use in diagnostic procedures.