

Anti-CNPase (CNP) Mouse Monoclonal Antibody [Clone ID: OTI3C3]

Catalog Number: M01017-4

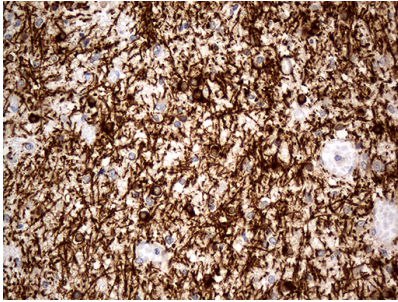
Overview

Product Name	Anti-CNPase (CNP) Mouse Monoclonal Antibody [Clone ID: OTI3C3]
Reactive Species	Human, Mouse, Rat
Description	Boster Bio CNP mouse monoclonal antibody, clone OTI3C3. Catalog# M01017-4. Tested in IHC, WB. This antibody reacts with Human, Mouse, Rat.
Conjugate	Unconjugated
Application	IHC, WB
Clonality	Monoclonal OTI3C3
Formulation	PBS (pH 7.3) containing 1% stabilizing protein, 50% glycerol and 0.02% sodium azide. This antibody is supplied in a stabilized formulation. Compatibility with conjugation reactions depends on the chemistry of the conjugation method used. For conjugation methods that are not compatible with the stabilizing components present in this formulation, a carrier-free antibody format is required.
Storage Instructions	Store at -20°C for one year. For short term storage and frequent use, store at 4°C for up to one month. Avoid repeated freeze-thaw cycles.
Host	Mouse
Uniprot ID	P09543

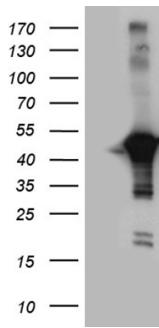
Technical Details

Immunogen	Full length human recombinant protein of human CNP (NP_149124) produced in HEK293T cell.
Isotype	IgG1
Concentration	1 mg/ml
Purification	Purified from mouse ascites fluids or tissue culture supernatant by affinity chromatography (protein A/G)
Suggested Dilutions	WB: 1:500~2000 IHC: 1:500

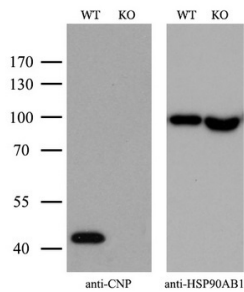
Anti-CNPase (CNP) Mouse Monoclonal Antibody [Clone ID: OTI3C3] (M01017-4) Images



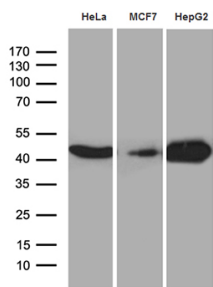
Immunohistochemical staining of paraffin-embedded Human embryonic cerebellum within the normal limits using anti-CNP mouse monoclonal antibody. (Heat-induced epitope retrieval by 1mM EDTA in 10mM Tris buffer (pH8.5) at 120Å°C for 3min)



HEK293T cells were transfected with the pCMV6-ENTRY control (Left lane) or pCMV6-ENTRY CNP (Right lane) cDNA for 48 hrs and lysed. Equivalent amounts of cell lysates (5 ug per lane) were separated by SDS-PAGE and immunoblotted with anti-CNP (1:2000).



Equivalent amounts of cell lysates (10 ug per lane) of wild-type HeLa cells (WT) and CNP-Knockout HeLa cells (KO) were separated by SDS-PAGE and immunoblotted with anti-CNP monoclonal antibody M01017-4. Then the blotted membrane was stripped and reprobed with anti-HSP90AB1 antibody as a loading control (1:500).



Western blot analysis of extracts (35ug) from 3 different cell lines by using anti-CNP monoclonal antibody (1:500).

Submit a product review to [Biocompare.com](https://www.biocompare.com)

Submit a review of this product to [Biocompare.com](https://www.biocompare.com) to receive a \$20 Amazon.com giftcard! Your reviews help your fellow scientists make the right decisions. Thank you for your contribution.



Anti-CNPase (CNP) Mouse Monoclonal Antibody [Clone ID: OT13C3]

For Research Use Only. Not for use in diagnostic procedures.