

Anti-Hu CD35 Purified CR1 Monoclonal Antibody

Catalog Number: M01022-1

About CR1

CD35 (complement receptor 1, CR1) is a monomeric multiple modular cell surface glycoprotein which serves as receptor for C3b and C4b, the most important components of the complement system leading to clearance of foreign macromolecules. It is expressed mainly on the surface of granulocytes, monocytes, erythrocytes, B cells and follicular dendritic cells. Besides its role in complement cascade, CD35 is involved in blocking BCR-induced proliferation and the differentiation of B cells to plasmablasts and their Ig production.

Overview

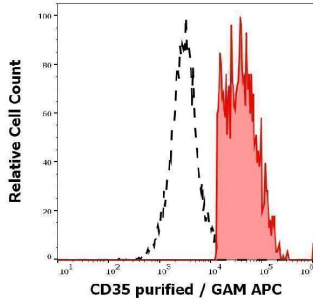
Product Name	Anti-Hu CD35 Purified CR1 Monoclonal Antibody
Reactive Species	Human, Primate
Description	Boster Bio Anti-Hu CD35 Purified CR1 Monoclonal Antibody (Catalog# M01022-1). Tested in Flow Cytometry, IP, WB, IHC-P, IHC-F, ICC application(s). This antibody reacts with Primate, Human.
Application	Flow Cytometry, IP, IHC-P, IHC-F, ICC, WB
Clonality	Monoclonal E11
Formulation	Phosphate buffered saline (PBS), pH 7.4, 15 mM sodium azide
Storage Instructions	Store at 2-8°C. Do not freeze.
Host	Mouse
Uniprot ID	P17927

Technical Details

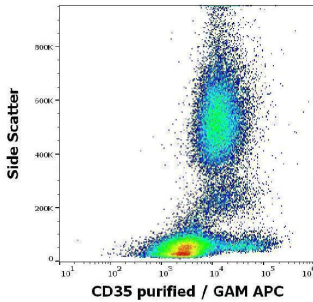
Immunogen	Acute monocytic leukemia cells and normal blood monocytes. The mouse monoclonal antibody E11 recognizes an extracellular epitope of CD35 (CR1), a type I transmembrane glycoprotein expressed on granulocytes, monocytes, B cells, follicular dendritic cells, erythrocytes, NK and T cell subsets, as well as e.g. on glomerular podocytes.
Predicted Reactive Species	Primate
Isotype	Mouse IgG1
Form	Liquid
Concentration	1 mg/ml
Purification	Purified by protein-A affinity chromatography.
Suggested Dilutions	Immunohistochemistry (paraffin sections): Heat mediated antigen retrieval. Immunohistochemistry (frozen sections): Acetone fixation.

Flow cytometry: 1-4 µg/ml

Anti-Hu CD35 Purified CR1 Monoclonal Antibody (M01022-1) Images



Separation of human CD35 positive lymphocytes (red-filled) from CD35 negative lymphocytes (black-dashed) in flow cytometry analysis (surface staining) of human peripheral whole blood stained using anti-human CD35 (E11) purified antibody (concentration in sample 3 µg/ml, GAM APC).



Flow cytometry surface staining pattern of human peripheral whole blood stained using anti-human CD35 (E11) purified antibody (concentration in sample 3 µg/ml, GAM APC).

Submit a product review to [Biocompare.com](https://www.biocompare.com)

Submit a review of this product to [Biocompare.com](https://www.biocompare.com) to receive a \$20 Amazon.com giftcard! Your reviews help your fellow scientists make the right decisions. Thank you for your contribution.



Anti-Hu CD35 Purified CR1 Monoclonal Antibody

For Research Use Only. Not for use in diagnostic procedures.