

## Anti-DC-SIGN CD209 Monoclonal Antibody [5D7]

Catalog Number: M01025-1

### About CD209

Dendritic cells (DCs) that control immune responses were recently found to capture and transport HIV from the mucosal area to remote lymph nodes, where DCs hand over HIV to CD4+ T lymphocytes. DCs also amplify the amount of virus and extend the duration of viral infectivity. Multiple strains of HIV-1, HIV-2 and SIV bind to DCs via DC-SIGN. ICAM-3 is the natural ligand for DC-SIGN. A DC-SIGN homologue (termed DC-SIGNR, L-SIGN, and DC-SIGN2) was identified recently. DC-SIGN forms a novel gene family with DC-SIGNR and many alternatively spliced isoforms of DC-SIGN and DC-SIGNR. The expression of DC-SIGN was found in mucosal tissues including placenta, small intestine, and rectum.

### Overview

Product Name	Anti-DC-SIGN CD209 Monoclonal Antibody [5D7]
Reactive Species	Human
Description	Boster Bio Anti-DC-SIGN CD209 Monoclonal Antibody [5D7] (Catalog # M01025-1). Tested in ELISA, WB, IHC-P applications. This antibody reacts with Human.
Application	ELISA, IHC-P, WB
Clonality	Monoclonal Clone: 5D7
Formulation	DC-SIGN Monoclonal Antibody is supplied in PBS containing 0.02% sodium azide.
Storage Instructions	DC-SIGN monoclonal antibody can be stored at -20°C, stable for one year.
Host	Mouse
Uniprot ID	Q9NNX6

### Technical Details

Immunogen	A recombinant His-tagged protein fragment corresponding to the extracellular region of human DC-SIGN.
Predicted Reactive Species	Mouse, Rat
Cross Reactivity	ORAI1 antibody is predicted to have no cross reactivity to other members in the ORAI family.
Isotype	IgG1
Form	Liquid
Concentration	1 mg/mL
Purification	DC-SIGN Monoclonal Antibody is Protein A purified.
Suggested Dilutions	Dilute the sample so that the expected range of concentrations fall within the detection range of this

kit.

If the expected range of concentration is unknown, a pilot test should be conducted to decide the optimal dilution ratio for your samples.

Some PubMed article(s) citing the expression level of this target are as follows:

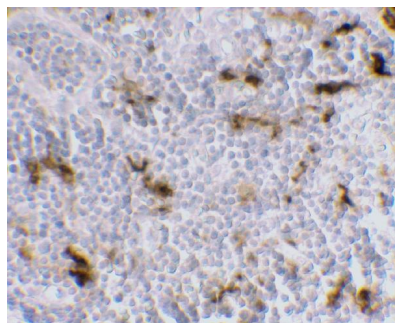
Boster Bio's internal QC testing used:

DC-SIGN antibody can be used for detection of DC-SIGN in Western Blot at 1 ug/mL and in immunohistochemistry at 5 - 10 ug/mL.

Antibody validated: Western Blot in human samples and Immunohistochemistry in human samples.

All other applications and species not yet tested. Optimal dilutions for each application should be determined by the researcher.

## Anti-DC-SIGN CD209 Monoclonal Antibody [5D7] (M01025-1) Images



Immunohistochemistry of DC-SIGN in human lymph node tissue with DC-SIGN antibody at 5 ug/mL.

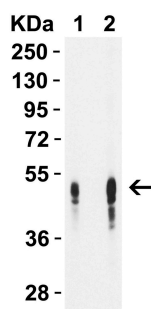


Figure 1 WB Validation of DC-SIGN in Human Lymph Node  
Loading: 10 µg of lysate per lane. Antibodies: DC-SIGN  
1ug/ml, 1h incubation at RT in 5% NFDm/TBST. Secondary:  
Goat anti-mouse IgG HRP conjugate at 1:5000 dilution. Lane  
1: 1 ug/mL Lane 2: 2 ug/mL

### Submit a product review to Biocompare.com

Submit a review of this product to Biocompare.com to receive a \$20 Amazon.com giftcard! Your reviews help your fellow scientists make the right decisions. Thank you for your contribution.



Anti-DC-SIGN CD209 Monoclonal Antibody [5D7]