

## Anti-FOXA2 Mouse Monoclonal Antibody [Clone ID: OTI3C10]

Catalog Number: M01032-2

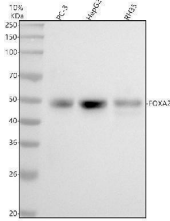
### Overview

Product Name	Anti-FOXA2 Mouse Monoclonal Antibody [Clone ID: OTI3C10]
Reactive Species	Human, Mouse, Rat
Description	Boster Bio Anti-FOXA2 mouse monoclonal antibody, clone OTI3C10 (formerly 3C10). Catalog# M01032-2. Tested in FC, IF, IHC, WB. This antibody reacts with Human, Mouse, Rat.
Application	Flow Cytometry, IF, IHC, WB
Clonality	Monoclonal OTI3C10
Formulation	PBS (pH 7.3) containing 1% stabilizing protein, 50% glycerol and 0.02% sodium azide. This antibody is supplied in a stabilized formulation. Compatibility with conjugation reactions depends on the chemistry of the conjugation method used. For conjugation methods that are not compatible with the stabilizing components present in this formulation, a carrier-free antibody format is required.
Storage Instructions	Store at -20°C as received.
Host	Mouse
Uniprot ID	Q9Y261

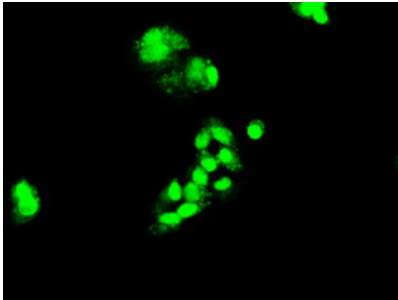
### Technical Details

Immunogen	Recombinant protein expressed in E.coli corresponding to amino acids 300-458 of human FOXA2
Isotype	IgG1
Concentration	1 mg/ml
Purification	Purified from mouse ascites fluids or tissue culture supernatant by affinity chromatography (protein A/G)
Suggested Dilutions	WB: 1:1000 IHC: 1:50 IF: 1:50-1:100 Flow Cytometry: 1:1,000

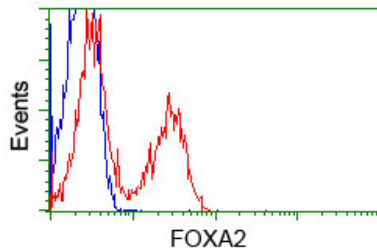
## Anti-FOXA2 Mouse Monoclonal Antibody [Clone ID: OTI3C10] (M01032-2) Images



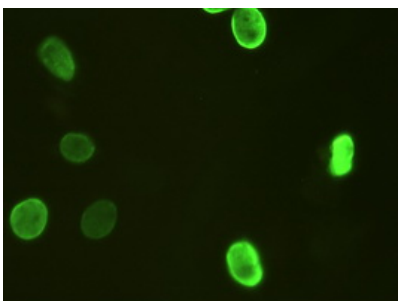
Western blot analysis of FOXA2 using anti-FOXA2 antibody (M01032-2). Electrophoresis was performed on a 5-20% SDS-PAGE gel at 70V (Stacking gel) / 90V (Resolving gel) for 2-3 hours. The sample well of each lane was loaded with 30 ug of sample under reducing conditions. Lane 1: human PC-3 whole cell lysates, Lane 2: human HepG2 whole cell lysates, Lane 3: rat RH35 whole cell lysates. After electrophoresis, proteins were transferred to a nitrocellulose membrane at 150 mA for 50-90 minutes. Blocked the membrane with 5% non-fat milk/TBS for 1.5 hour at RT. The membrane was incubated with mouse anti-FOXA2 antigen affinity purified monoclonal antibody (Catalog # M01032-2) at 1:1000 overnight at 4°C, then washed with TBS-0.1%Tween 3 times with 5 minutes each and probed with a goat anti-mouse IgG-HRP secondary antibody at a dilution of 1:5000 for 1.5 hour at RT. The signal is developed using an Enhanced Chemiluminescent detection (ECL) kit (Catalog # EK1001) with Tanon 5200 system. A specific band was detected for FOXA2 at approximately 48 kDa. The expected band size for FOXA2 is at 48 kDa.



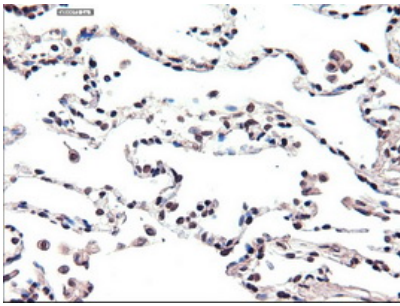
Immunofluorescent staining of HepG2 cells using anti-FOXA2 mouse monoclonal antibody (M01032-2) at 1:50 dilution.



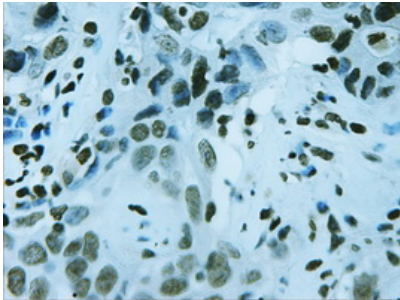
HEK293T cells transfected with either pCMV6-ENTRY FOXA2 (Red) or empty vector control plasmid (Blue) were immunostained with anti-FOXA2 mouse monoclonal (M01032-2)



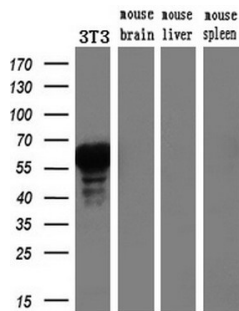
Anti-FOXA2 mouse monoclonal antibody (M01032-2) immunofluorescent staining of HeLa cells transiently transfected by pCMV6-ENTRY FOXA2



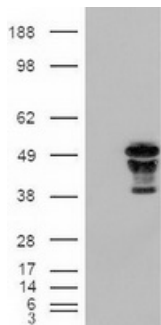
Immunohistochemical staining of paraffin-embedded lung within the normal limits using anti-FOXA2 (M01032-2) mouse monoclonal antibody (Heat-induced epitope retrieval by 10mM citric buffer)



Immunohistochemical staining of paraffin-embedded Carcinoma of liver using anti-FOXA2 (M01032-2) mouse monoclonal antibody (Heat-induced epitope retrieval by 10mM citric buffer)



Western blot analysis of extracts (10ug) from a mouse cell line and 3 different mouse tissues by using anti-FOXA2 monoclonal antibody (1:200).



HEK293T cells were transfected with the pCMV6-ENTRY control (Left lane) or pCMV6-ENTRY FOXA2 (Right lane) cDNA for 48 hrs and lysed. Equivalent amounts of cell lysates (5 ug per lane) were separated by SDS-PAGE and immunoblotted with anti-FOXA2.

## Submit a product review to [Biocompare.com](https://www.biocompare.com)

Submit a review of this product to [Biocompare.com](https://www.biocompare.com) to receive a \$20 Amazon.com giftcard! Your reviews help your fellow scientists make the right decisions. Thank you for your contribution.



Anti-FOXA2 Mouse Monoclonal Antibody [Clone ID: OT13C10]

For Research Use Only. Not for use in diagnostic procedures.