

Anti-Paxillin PXN Rabbit Monoclonal Antibody, Clone#RM256

Catalog Number: M01033-1

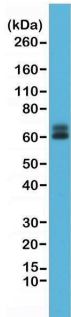
Overview

Product Name	Anti-Paxillin PXN Rabbit Monoclonal Antibody, Clone#RM256
Reactive Species	Human
Description	Boster Bio Anti-Paxillin PXN Rabbit Monoclonal Antibody, Clone#RM256 (Catalog # M01033-1). Tested in WB, ICC, IHC applications. This antibody reacts with Human.
Application	IHC, ICC, WB
Clonality	Monoclonal RM256
Formulation	50% Glycerol/PBS with 1% stabilizing protein and 0.09% sodium azide This antibody is supplied in a stabilized formulation. Compatibility with conjugation reactions depends on the chemistry of the conjugation method used. For conjugation methods that are not compatible with the stabilizing components present in this formulation, a carrier-free antibody format is required.
Storage Instructions	Store at -20°C for one year. Avoid repeated freeze-thaw cycles.
Host	Rabbit
Uniprot ID	P49023

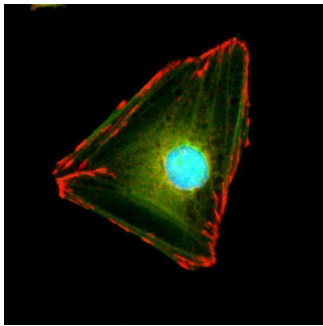
Technical Details

Immunogen	A peptide corresponding to the N-terminus of human Paxillin
Predicted Reactive Species	Mouse, Rat
Cross Reactivity	This antibody reacts to human Paxillin. This antibody may also react to mouse or rat Paxillin, as predicted by immunogen homology.
Isotype	Rabbit IgG
Form	Liquid
Concentration	0.5-1mg/ml, actual concentration vary by lot. Use suggested dilution ratio to decide dilution procedure.
Purification	Protein A affinity purified from an animal origin-free culture supernatant
Suggested Dilutions	Immunocytochemistry (ICC): 1:1000-1:2000 dilution WB: 1:1000-1:2000 dilution Immunohistochemistry (IHC): 1:1000 dilution.

Anti-Paxillin PXN Rabbit Monoclonal Antibody, Clone#RM256 (M01033-1) Images



Western Blotting result Western Blot of HeLa cell lysate, using anti-Paxillin rabbit monoclonal Antibody Clone RM256 at a 1:1000 dilution.



ICC result Immunocytochemical staining of HeLa cells, using anti-Paxillin rabbit monoclonal Antibody Clone RM256 (red). Actin filaments have been labeled with fluorescein phalloidin (green), and nucleus labeled with DAPI (blue).

Submit a product review to Biocompare.com

Submit a review of this product to Biocompare.com to receive a \$20 Amazon.com giftcard! Your reviews help your fellow scientists make the right decisions. Thank you for your contribution.



Anti-Paxillin PXN Rabbit Monoclonal Antibody, Clone#RM256

For Research Use Only. Not for use in diagnostic procedures.