

Anti-TIMP2 Mouse Monoclonal Antibody [Clone ID: OTI1A6]

Catalog Number: M01037-2

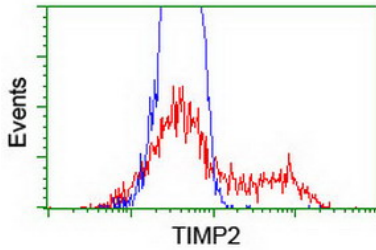
Overview

Product Name	Anti-TIMP2 Mouse Monoclonal Antibody [Clone ID: OTI1A6]
Reactive Species	Dog, Human, Monkey, Mouse, Rat
Description	Boster Bio TIMP2 mouse monoclonal antibody, clone OTI1A6 (formerly 1A6). Catalog# M01037-2. Tested in FC, IHC, WB. This antibody reacts with Human, Monkey, Mouse, Rat, Dog.
Conjugate	Unconjugated
Application	Flow Cytometry, IHC, WB
Clonality	Monoclonal OTI1A6
Formulation	PBS (PH 7.3) containing 1% BSA, 50% glycerol and 0.02% sodium azide.
Storage Instructions	Store at -20°C for one year. For short term storage and frequent use, store at 4°C for up to one month. Avoid repeated freeze-thaw cycles.
Host	Mouse
Uniprot ID	P16035

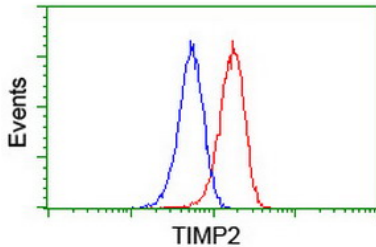
Technical Details

Immunogen	Full length human recombinant protein of human TIMP2 (NP_003246) produced in HEK293T cell.
Isotype	IgG1
Concentration	1 mg/ml
Purification	Purified from mouse ascites fluids or tissue culture supernatant by affinity chromatography (protein A/G)
Suggested Dilutions	Dilute the sample so that the expected range of concentrations fall within the detection range of this kit. If the expected range of concentration is unknown, a pilot test should be conducted to decide the optimal dilution ratio for your samples. Some PubMed article(s) citing the expression level of this target are as follows:

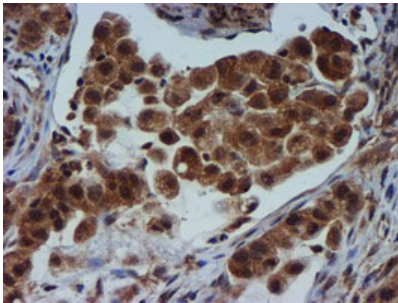
Anti-TIMP2 Mouse Monoclonal Antibody [Clone ID: OTI1A6] (M01037-2) Images



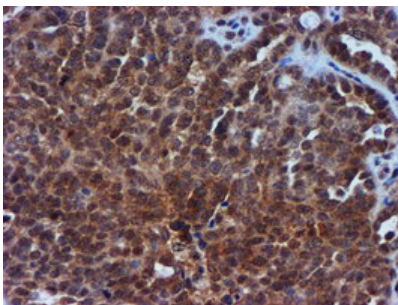
HEK293T cells transfected with either TIMP2 (Myc-DDK-tagged) overexpress plasmid (Red) or empty vector control plasmid (Blue) were immunostained by anti-TIMP2 antibody (M01037-2)



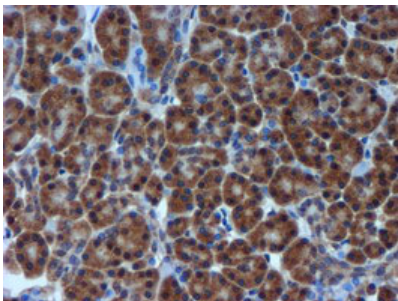
Flow cytometric Analysis of Jurkat cells



Immunohistochemical staining of paraffin-embedded Carcinoma of Human lung tissue using anti-TIMP2 mouse monoclonal antibody. (Heat-induced epitope retrieval by 10mM citric buffer)

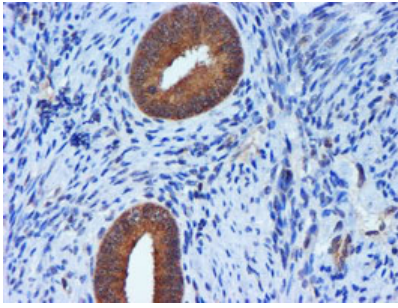


Immunohistochemical staining of paraffin-embedded Adenocarcinoma of Human ovary tissue using anti-TIMP2 mouse monoclonal antibody. (Heat-induced epitope retrieval by 10mM citric buffer)

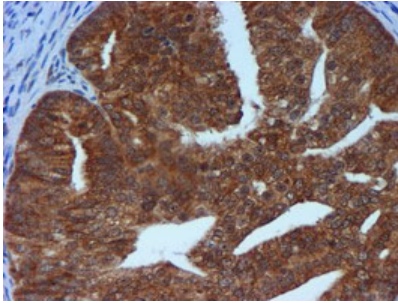


Immunohistochemical staining of paraffin-embedded Human pancreas tissue within the normal limits using anti-TIMP2 mouse monoclonal antibody. (Heat-induced epitope retrieval by 10mM citric buffer)

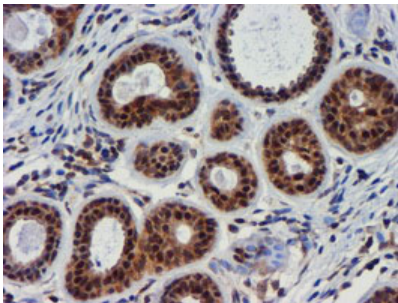
Immunohistochemical staining of paraffin-embedded Human



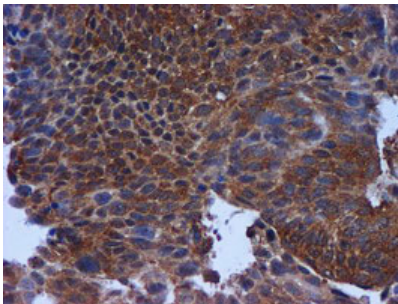
endometrium tissue within the normal limits using anti-TIMP2 mouse monoclonal antibody. (Heat-induced epitope retrieval by 10mM citric buffer



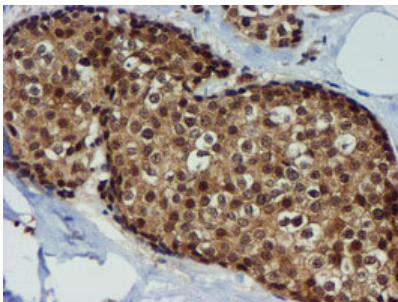
Immunohistochemical staining of paraffin-embedded Adenocarcinoma of Human endometrium tissue using anti-TIMP2 mouse monoclonal antibody. (Heat-induced epitope retrieval by 10mM citric buffer



Immunohistochemical staining of paraffin-embedded Human breast tissue within the normal limits using anti-TIMP2 mouse monoclonal antibody. (Heat-induced epitope retrieval by 10mM citric buffer

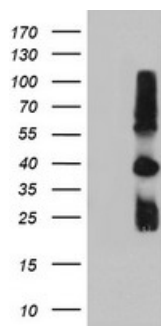


Immunohistochemical staining of paraffin-embedded Carcinoma of Human bladder tissue using anti-TIMP2 mouse monoclonal antibody. (Heat-induced epitope retrieval by 10mM citric buffer



Immunohistochemical staining of paraffin-embedded Adenocarcinoma of Human breast tissue using anti-TIMP2 mouse monoclonal antibody. (Heat-induced epitope retrieval by 10mM citric buffer

HEK293T cells were transfected with the pCMV6-ENTRY control (Left lane) or pCMV6-ENTRY TIMP2 (Right lane) cDNA



for 48 hrs and lysed. Equivalent amounts of cell lysates (5 ug per lane) were separated by SDS-PAGE and immunoblotted with anti-TIMP2.

Submit a product review to Biocompare.com

Submit a review of this product to Biocompare.com to receive a \$20 Amazon.com giftcard! Your reviews help your fellow scientists make the right decisions. Thank you for your contribution.



Anti-TIMP2 Mouse Monoclonal Antibody [Clone ID: OTI1A6]